



LM-79-08 Test Report

For

Antec Lighting Inc

(Brand Name: )

Uniy C, 3979 E Guasti Road, Ontario, CA 91761

Model name(s):

AOK-35WiE-NV-LV2-XX-XX70-T302-P

Report Type: Testing and Report According to IES LM-79-2008
Type of Luminaire: Outdoor Pole/Arm-Mounted Area and Roadway Luminaires
Report Date: 2019-03-20
Ningbo TengLi Testing Co., Ltd
Prepared By: 2nd floor, Block B, Ningbo Testing and Certification Base,
No. 66 Qingyi Road, Ningbo National Hi-Tech Zone,
Ningbo, Zhejiang

Test & Report By:

Xeon Ren

Engineer: Xeon Ren

Review By:

Johnson Sun

Manager: Johnson Sun

Note: 1. The results contained in this report pertain only to the tested samples
2. This report does not imply product certification, approval, or endorsement by A2LA, or any agency of the Federal Government.



1.1 Product Information:		
Model Number	AOK-35WiE-NV-LV2-XX-XX70-T302-P	
Remark	The first "XX" can be "00" =no photocontrol or "PH"=photocontrol provided. The second "XX" could be 27/30/35/40/45/50/57 refers to CCT. This is multiple listed report, the Project Number of the original report is JAE190121-D-R1.	
Representative (Tested) Model	AOK-35WiE-NV-LV2-00-2770-T302-P	
Model Difference	All construction and rating are the same, except CCT	
SKU (if available)	N/A	
Type of Luminaire (for integral lamps, list base type and lamp type)	Outdoor Pole/Arm-Mounted Area and Roadway Luminaires	
LED Manufacturer	Lumileds	
LED Model	LUXEON V Family	
Dimming	Dimmable	
Sample Number	JAE190121-D1	
Date of Receipt	Feb.23, 2019	
Luminaire Aperture (for downlights)	--	in.
Luminaire Length	--	mm
Luminaires Width	--	mm
Number of Units (modular products)	N/A	s

1.2 Rated Values:	
Rated Voltage / Frequency	100-277Vac, 50/60Hz
Nominal Power	35W
Rated Initial Lamp Lumen	--
Declared CCT	2700K,3000K,3500K,4000K,4500K,5000K, 5700K



1.3 Test Specifications:

Test item	<ol style="list-style-type: none"> 1. Total Luminous Flux 2. Luminous Distribution Intensity 3. Luminous Efficacy 4. Electrical Parameters
Reference Standard	<ol style="list-style-type: none"> 1. IES LM-79-2008 Electrical and Photometric Measurements of Solid-State Lighting Products 2. IESNA TM-16-05 Technical Memorandum on Light Emitting Diode (LED) Sources and Systems
Reference Work Instruction	QD25

1.4 Test Methods

1) Photometric and Light Distribution Measurement – Goniophotometer Method:

Photometric parameters were measured using the goniophotometer and software. The ambient temperature shall be maintained at $25\text{ }^{\circ}\text{C} \pm 1\text{ }^{\circ}\text{C}$, measured at a point not more than 1 m from the sample and at the same height as the sample. The sample was operated at 120 or rated Volts AC, 60Hz. It was stabilized before measurement was made. Luminous flux, luminaire efficacy, zonal lumen were calculated from the software taken at 1 ° vertical intervals and 22.5 ° horizontal intervals.

2) Electrical Measurements:

Electrical parameters were measured using power meters incorporated in goniophotometer or sphere-spectroradiometer system. The ambient temperature surrounding the sample was maintained at $25\text{ }^{\circ}\text{C} \pm 1\text{ }^{\circ}\text{C}$. The sample was operated at 120 or rated Volts AC, 60Hz. It was stabilized before measurement was made. Voltage, frequency, current, power, power factor and total harmonic distortion were measured by and read from the power meter.



2.1 Summary of Test Result

Criteria Item	Measured Value		Compliance	Requirement (DLC V4.4)	
	2700K				
Power (W)	2700K	120V	35.79	N/A	N/A
		277V	35.34		
Power Factor	2700K	120V	0.9940	Pass	>= 0.9(-3%)
		277V	0.8794		
THD %	2700K	120V	6.23	Pass	<= 20(+5)
		277V	8.31		
Luminous Intensity Distribution	Zonal lumens in the 0-90 °		100	Pass	=100(-1)
	Zonal lumens in the 80-90 °		0.3	Pass	<=10(+3)
Total Luminous	2700K	120V	4524.3	Pass	>=1000(-10%)
		277V	4489.2		
Luminous Efficacy	2700K	120V	126.41	Pass	Standard: >= 90(-3%) Premium: >= 110(-3%)
		277V	127.03		



2.2 Electrical, Photometric and Chromaticity Measurements

Test date	2019-02-25	Test Ambient:	25.2 °C
Test Orientation	As intended	Stabilization Time (min)	90
Model Number	AOK-35WiE-NV-LV2-00-2770-T3 02-P		

Electrical Measurement:

Sample No.	Voltage (Vac)	Frequency (Hz)	Current (A)	Power (W)	Power Factor	THD %
JAE190121-	120.0	60	0.3001	35.79	0.9940	6.23
D1	277.0	60	0.1451	35.34	0.8794	8.31

Photometric Measurement – Goniophotometer Method:

Parameter	Result	
Test Voltage (V)	120.0	277.0
Frequency (Hz)	60	60
Total Luminous (lm)	4524.3	4489.2
Luminous Efficacy (lm/W)	126.41	127.03
Zonal lumens in the 0-90 °	100	--
Zonal lumens in the 80-90 °	0.3	--
Beam Angle (°)	107.1	--
Center Beam Candle Power (cd)	1082	--

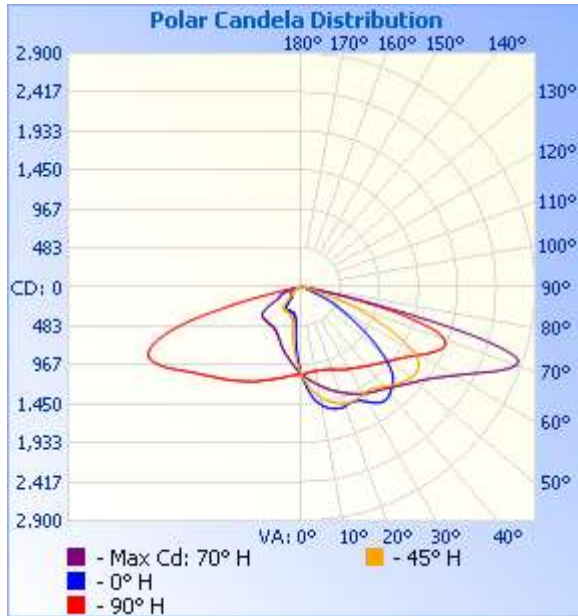


Zonal Lumen Tabulation

Zonal Lumen Summary		
Zone	Lumens	% Luminaire
0-30	856.8	18.9%
0-40	1,523.4	33.7%
0-60	3,249.5	71.8%
60-90	1,274.7	28.2%
70-100	434.7	9.6%
90-120	0	0%
0-90	4,524.2	100%
90-180	0	0%
0-180	4,524.2	100%

Lumens Per Zone					
Zone	Lumens	% Total	Zone	Lumens	% Total
0-10	99.6	2.2%	90-100	0	0%
10-20	285.6	6.3%	100-110	0	0%
20-30	471.6	10.4%	110-120	0	0%
30-40	666.7	14.7%	120-130	0	0%
40-50	828.1	18.3%	130-140	0	0%
50-60	897.9	19.8%	140-150	0	0%
60-70	840.1	18.6%	150-160	0	0%
70-80	419.6	9.3%	160-170	0	0%
80-90	15.1	0.3%	170-180	0	0%

Photometric Data



Illuminance at a Distance

	Center Beam fc	Beam Width	
3.3ft	99.4 fc	4.4 ft	17.0 ft
6.6ft	24.8 fc	8.8 ft	33.9 ft
9.9ft	11.0 fc	13.2 ft	50.9 ft
13.2ft	6.2 fc	17.6 ft	67.9 ft
16.5ft	4.0 fc	22.0 ft	84.9 ft
19.8ft	2.8 fc	26.4 ft	101.8 ft

Vert. Spread: 67.4°
Horiz. Spread: 137.5°

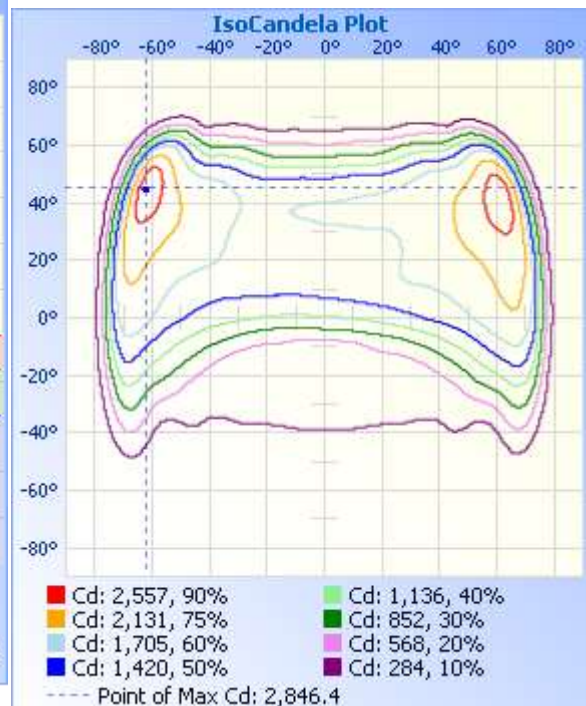
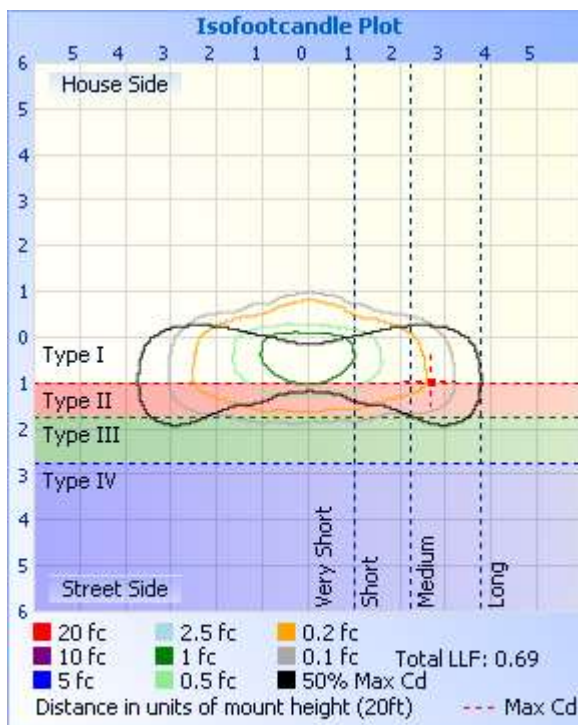




Table--1

UNIT: °C

C (DEG) T (DEG)	0	5	10	15	20	25	30	35	40	45	50	55	60	65	70	75	80	85	90
0	1082	1082	1082	1082	1082	1082	1082	1082	1082	1082	1082	1082	1082	1082	1082	1082	1082	1082	1082
5	1096	1121	1146	1170	1192	1215	1236	1254	1270	1284	1297	1308	1316	1324	1330	1334	1336	1338	1340
10	1130	1183	1226	1265	1305	1342	1374	1397	1419	1441	1458	1468	1475	1482	1488	1490	1490	1491	1492
15	1173	1248	1303	1356	1408	1456	1487	1509	1530	1550	1562	1565	1566	1568	1568	1567	1565	1564	1562
20	1225	1317	1382	1446	1509	1558	1584	1597	1610	1622	1623	1616	1608	1601	1594	1589	1583	1578	1574
25	1287	1390	1460	1527	1594	1640	1651	1648	1645	1643	1634	1623	1610	1598	1588	1581	1575	1568	1562
30	1348	1458	1531	1602	1673	1712	1704	1680	1656	1633	1630	1634	1638	1642	1643	1644	1643	1644	1644
35	1418	1528	1600	1671	1743	1777	1760	1729	1698	1669	1673	1686	1701	1715	1724	1729	1732	1735	1739
40	1489	1599	1673	1747	1820	1853	1834	1804	1774	1745	1739	1740	1741	1742	1740	1733	1726	1719	1712
45	1570	1681	1759	1836	1912	1945	1923	1890	1858	1825	1799	1773	1749	1725	1702	1679	1655	1630	1609
50	1671	1785	1869	1951	2033	2063	2032	1991	1950	1908	1834	1755	1677	1601	1538	1488	1438	1387	1337
55	1805	1924	2012	2101	2189	2206	2144	2072	2001	1928	1775	1611	1448	1288	1176	1116	1059	1002	944
60	1972	2102	2200	2298	2393	2374	2230	2075	1923	1772	1564	1347	1130	914	780	726	679	631	581
65	2087	2254	2392	2530	2662	2578	2267	1937	1612	1297	1107	930	751	572	460	416	377	337	297
70	1891	2124	2342	2562	2778	2656	2186	1688	1192	712	564	443	321	197	130	122	117	112	106
75	1000	1095	1173	1256	1358	1293	1040	755	453	144	113	103	92.4	80.6	74.1	72.4	70.9	69.3	67.7
80	154	147	134	120	105	92.1	83.2	73.3	61.9	49.0	48.6	48.8	48.7	48.6	47.3	44.9	42.5	40.0	37.5
85	2.74	3.10	3.48	3.85	4.20	4.68	5.38	6.22	7.06	7.89	9.66	11.5	13.4	15.1	15.7	14.9	14.0	13.1	12.1
90	0.00	0.00	0.00	0.00	0.00	0.00	0.00	0.00	0.00	0.00	0.00	0.00	0.00	0.00	0.00	0.00	0.00	0.00	0.00
95	0.00	0.00	0.00	0.00	0.00	0.00	0.00	0.00	0.00	0.00	0.00	0.00	0.00	0.00	0.00	0.00	0.00	0.00	0.00
100	0.00	0.00	0.00	0.00	0.00	0.00	0.00	0.00	0.00	0.00	0.00	0.00	0.00	0.00	0.00	0.00	0.00	0.00	0.00
105	0.00	0.00	0.00	0.00	0.00	0.00	0.00	0.00	0.00	0.00	0.00	0.00	0.00	0.00	0.00	0.00	0.00	0.00	0.00
110	0.00	0.00	0.00	0.00	0.00	0.00	0.00	0.00	0.00	0.00	0.00	0.00	0.00	0.00	0.00	0.00	0.00	0.00	0.00
115	0.00	0.00	0.00	0.00	0.00	0.00	0.00	0.00	0.00	0.00	0.00	0.00	0.00	0.00	0.00	0.00	0.00	0.00	0.00
120	0.00	0.00	0.00	0.00	0.00	0.00	0.00	0.00	0.00	0.00	0.00	0.00	0.00	0.00	0.00	0.00	0.00	0.00	0.00
125	0.00	0.00	0.00	0.00	0.00	0.00	0.00	0.00	0.00	0.00	0.00	0.00	0.00	0.00	0.00	0.00	0.00	0.00	0.00
130	0.00	0.00	0.00	0.00	0.00	0.00	0.00	0.00	0.00	0.00	0.00	0.00	0.00	0.00	0.00	0.00	0.00	0.00	0.00
135	0.00	0.00	0.00	0.00	0.00	0.00	0.00	0.00	0.00	0.00	0.00	0.00	0.00	0.00	0.00	0.00	0.00	0.00	0.00
140	0.00	0.00	0.00	0.00	0.00	0.00	0.00	0.00	0.00	0.00	0.00	0.00	0.00	0.00	0.00	0.00	0.00	0.00	0.00
145	0.00	0.00	0.00	0.00	0.00	0.00	0.00	0.00	0.00	0.00	0.00	0.00	0.00	0.00	0.00	0.00	0.00	0.00	0.00
150	0.00	0.00	0.00	0.00	0.00	0.00	0.00	0.00	0.00	0.00	0.00	0.00	0.00	0.00	0.00	0.00	0.00	0.00	0.00
155	0.00	0.00	0.00	0.00	0.00	0.00	0.00	0.00	0.00	0.00	0.00	0.00	0.00	0.00	0.00	0.00	0.00	0.00	0.00
160	0.00	0.00	0.00	0.00	0.00	0.00	0.00	0.00	0.00	0.00	0.00	0.00	0.00	0.00	0.00	0.00	0.00	0.00	0.00
165	0.00	0.00	0.00	0.00	0.00	0.00	0.00	0.00	0.00	0.00	0.00	0.00	0.00	0.00	0.00	0.00	0.00	0.00	0.00
170	0.00	0.00	0.00	0.00	0.00	0.00	0.00	0.00	0.00	0.00	0.00	0.00	0.00	0.00	0.00	0.00	0.00	0.00	0.00
175	0.00	0.00	0.00	0.00	0.00	0.00	0.00	0.00	0.00	0.00	0.00	0.00	0.00	0.00	0.00	0.00	0.00	0.00	0.00
180	0.00	0.00	0.00	0.00	0.00	0.00	0.00	0.00	0.00	0.00	0.00	0.00	0.00	0.00	0.00	0.00	0.00	0.00	0.00



Table--2 UNIT: cd

C (DEG) γ (DEG)	95	100	105	110	115	120	125	130	135	140	145	150	155	160	165	170	175	180	185
0	1082	1082	1082	1082	1082	1082	1082	1082	1082	1082	1082	1082	1082	1082	1082	1082	1082	1082	1082
5	1335	1330	1324	1317	1309	1299	1288	1275	1259	1242	1224	1204	1182	1159	1135	1111	1087	1062	1037
10	1485	1477	1471	1463	1452	1440	1428	1414	1392	1365	1338	1310	1275	1235	1193	1151	1107	1055	1002
15	1555	1548	1541	1533	1525	1516	1507	1497	1479	1453	1428	1401	1365	1311	1254	1195	1135	1060	977
20	1569	1564	1559	1555	1552	1550	1548	1545	1536	1515	1495	1474	1441	1385	1317	1249	1179	1085	968
25	1558	1553	1549	1545	1545	1547	1549	1551	1550	1544	1538	1532	1512	1459	1384	1309	1232	1128	981
30	1630	1616	1602	1589	1576	1564	1551	1539	1533	1546	1561	1576	1576	1528	1447	1365	1282	1170	1002
35	1724	1709	1694	1678	1654	1622	1590	1558	1539	1563	1588	1614	1624	1580	1497	1412	1328	1215	1032
40	1710	1709	1708	1704	1690	1667	1644	1621	1608	1628	1650	1671	1681	1637	1553	1468	1383	1271	1075
45	1617	1628	1639	1649	1657	1664	1672	1681	1692	1713	1735	1756	1767	1723	1634	1545	1456	1341	1129
50	1368	1400	1431	1462	1509	1570	1632	1696	1756	1789	1821	1853	1875	1834	1738	1642	1545	1426	1195
55	979	1014	1049	1087	1181	1328	1477	1627	1767	1830	1890	1952	2003	1972	1868	1762	1656	1528	1273
60	614	647	678	716	832	1028	1225	1422	1611	1756	1902	2051	2187	2190	2071	1949	1827	1682	1367
65	329	360	391	426	520	674	826	976	1142	1456	1782	2114	2427	2502	2353	2198	2042	1862	1466
70	112	117	122	130	189	299	407	513	651	1155	1677	2204	2705	2835	2606	2370	2134	1883	1469
75	69.7	71.6	73.4	75.5	80.9	90.1	98.2	107	143	569	992	1396	1768	1848	1683	1517	1367	1244	944
80	40.3	43.0	45.8	48.4	50.0	50.2	50.4	50.4	51.5	75.0	94.3	110	126	149	178	207	234	251	198
85	13.3	14.5	15.6	16.6	16.3	14.8	13.3	11.6	10.0	9.18	8.26	7.25	6.36	5.69	5.14	4.54	3.91	3.30	3.24
90	0.00	0.00	0.00	0.00	0.00	0.00	0.00	0.00	0.00	0.00	0.00	0.00	0.00	0.00	0.00	0.00	0.00	0.00	0.00
95	0.00	0.00	0.00	0.00	0.00	0.00	0.00	0.00	0.00	0.00	0.00	0.00	0.00	0.00	0.00	0.00	0.00	0.00	0.00
100	0.00	0.00	0.00	0.00	0.00	0.00	0.00	0.00	0.00	0.00	0.00	0.00	0.00	0.00	0.00	0.00	0.00	0.00	0.00
105	0.00	0.00	0.00	0.00	0.00	0.00	0.00	0.00	0.00	0.00	0.00	0.00	0.00	0.00	0.00	0.00	0.00	0.00	0.00
110	0.00	0.00	0.00	0.00	0.00	0.00	0.00	0.00	0.00	0.00	0.00	0.00	0.00	0.00	0.00	0.00	0.00	0.00	0.00
115	0.00	0.00	0.00	0.00	0.00	0.00	0.00	0.00	0.00	0.00	0.00	0.00	0.00	0.00	0.00	0.00	0.00	0.00	0.00
120	0.00	0.00	0.00	0.00	0.00	0.00	0.00	0.00	0.00	0.00	0.00	0.00	0.00	0.00	0.00	0.00	0.00	0.00	0.00
125	0.00	0.00	0.00	0.00	0.00	0.00	0.00	0.00	0.00	0.00	0.00	0.00	0.00	0.00	0.00	0.00	0.00	0.00	0.00
130	0.00	0.00	0.00	0.00	0.00	0.00	0.00	0.00	0.00	0.00	0.00	0.00	0.00	0.00	0.00	0.00	0.00	0.00	0.00
135	0.00	0.00	0.00	0.00	0.00	0.00	0.00	0.00	0.00	0.00	0.00	0.00	0.00	0.00	0.00	0.00	0.00	0.00	0.00
140	0.00	0.00	0.00	0.00	0.00	0.00	0.00	0.00	0.00	0.00	0.00	0.00	0.00	0.00	0.00	0.00	0.00	0.00	0.00
145	0.00	0.00	0.00	0.00	0.00	0.00	0.00	0.00	0.00	0.00	0.00	0.00	0.00	0.00	0.00	0.00	0.00	0.00	0.00
150	0.00	0.00	0.00	0.00	0.00	0.00	0.00	0.00	0.00	0.00	0.00	0.00	0.00	0.00	0.00	0.00	0.00	0.00	0.00
155	0.00	0.00	0.00	0.00	0.00	0.00	0.00	0.00	0.00	0.00	0.00	0.00	0.00	0.00	0.00	0.00	0.00	0.00	0.00
160	0.00	0.00	0.00	0.00	0.00	0.00	0.00	0.00	0.00	0.00	0.00	0.00	0.00	0.00	0.00	0.00	0.00	0.00	0.00
165	0.00	0.00	0.00	0.00	0.00	0.00	0.00	0.00	0.00	0.00	0.00	0.00	0.00	0.00	0.00	0.00	0.00	0.00	0.00
170	0.00	0.00	0.00	0.00	0.00	0.00	0.00	0.00	0.00	0.00	0.00	0.00	0.00	0.00	0.00	0.00	0.00	0.00	0.00
175	0.00	0.00	0.00	0.00	0.00	0.00	0.00	0.00	0.00	0.00	0.00	0.00	0.00	0.00	0.00	0.00	0.00	0.00	0.00
180	0.00	0.00	0.00	0.00	0.00	0.00	0.00	0.00	0.00	0.00	0.00	0.00	0.00	0.00	0.00	0.00	0.00	0.00	0.00



Table--3 UNIT: cd

C (DEG) T (DEG)	190	195	200	205	210	215	220	225	230	235	240	245	250	255	260	265	270	275	280
0	1082	1082	1082	1082	1082	1082	1082	1082	1082	1082	1082	1082	1082	1082	1082	1082	1082	1082	1082
5	1012	986	961	936	910	886	863	843	823	804	786	772	763	756	751	747	743	751	759
10	948	894	839	781	723	664	609	569	536	506	476	453	440	435	430	425	419	428	436
15	894	810	731	657	586	516	451	410	393	379	365	354	349	348	347	347	346	349	352
20	850	732	630	558	502	447	395	360	351	344	337	331	329	329	330	331	331	333	334
25	834	687	561	488	448	409	372	346	339	334	330	326	324	326	327	328	330	330	331
30	834	666	522	445	415	388	361	340	335	331	327	324	324	326	329	332	335	334	333
35	848	665	503	420	397	375	354	336	333	330	327	325	325	326	328	330	331	332	332
40	877	680	503	413	393	373	354	336	323	309	295	282	273	270	267	263	260	263	265
45	916	703	510	406	379	353	326	299	270	242	214	188	174	173	173	173	173	172	170
50	964	733	516	387	332	278	224	176	168	163	157	153	152	153	155	156	158	156	153
55	1017	760	516	368	305	243	182	129	130	132	135	137	140	141	143	144	146	143	141
60	1048	727	420	254	214	178	144	115	116	119	121	124	127	129	132	135	138	134	130
65	1068	669	289	105	99.3	97.9	97.0	96.8	101	105	108	112	114	114	114	114	114	113	112
70	1060	654	264	77.4	75.8	77.0	78.1	79.1	79.6	79.9	80.2	80.5	79.8	78.0	76.4	74.9	73.3	74.3	75.3
75	676	415	170	52.7	50.8	50.8	50.9	50.7	48.0	45.0	42.1	39.0	36.5	34.4	32.4	30.6	28.7	30.2	31.8
80	144	93.7	48.9	28.1	28.1	28.8	29.6	30.0	24.3	18.2	12.1	6.25	3.24	2.69	2.26	1.82	1.38	1.86	2.33
85	2.96	2.66	2.30	2.34	2.86	3.31	3.67	3.81	2.82	1.89	1.11	0.34	0.01	0.00	0.00	0.00	0.00	0.00	0.00
90	0.00	0.00	0.00	0.00	0.00	0.00	0.00	0.00	0.00	0.00	0.00	0.00	0.00	0.00	0.00	0.00	0.00	0.00	0.00
95	0.00	0.00	0.00	0.00	0.00	0.00	0.00	0.00	0.00	0.00	0.00	0.00	0.00	0.00	0.00	0.00	0.00	0.00	0.00
100	0.00	0.00	0.00	0.00	0.00	0.00	0.00	0.00	0.00	0.00	0.00	0.00	0.00	0.00	0.00	0.00	0.00	0.00	0.00
105	0.00	0.00	0.00	0.00	0.00	0.00	0.00	0.00	0.00	0.00	0.00	0.00	0.00	0.00	0.00	0.00	0.00	0.00	0.00
110	0.00	0.00	0.00	0.00	0.00	0.00	0.00	0.00	0.00	0.00	0.00	0.00	0.00	0.00	0.00	0.00	0.00	0.00	0.00
115	0.00	0.00	0.00	0.00	0.00	0.00	0.00	0.00	0.00	0.00	0.00	0.00	0.00	0.00	0.00	0.00	0.00	0.00	0.00
120	0.00	0.00	0.00	0.00	0.00	0.00	0.00	0.00	0.00	0.00	0.00	0.00	0.00	0.00	0.00	0.00	0.00	0.00	0.00
125	0.00	0.00	0.00	0.00	0.00	0.00	0.00	0.00	0.00	0.00	0.00	0.00	0.00	0.00	0.00	0.00	0.00	0.00	0.00
130	0.00	0.00	0.00	0.00	0.00	0.00	0.00	0.00	0.00	0.00	0.00	0.00	0.00	0.00	0.00	0.00	0.00	0.00	0.00
135	0.00	0.00	0.00	0.00	0.00	0.00	0.00	0.00	0.00	0.00	0.00	0.00	0.00	0.00	0.00	0.00	0.00	0.00	0.00
140	0.00	0.00	0.00	0.00	0.00	0.00	0.00	0.00	0.00	0.00	0.00	0.00	0.00	0.00	0.00	0.00	0.00	0.00	0.00
145	0.00	0.00	0.00	0.00	0.00	0.00	0.00	0.00	0.00	0.00	0.00	0.00	0.00	0.00	0.00	0.00	0.00	0.00	0.00
150	0.00	0.00	0.00	0.00	0.00	0.00	0.00	0.00	0.00	0.00	0.00	0.00	0.00	0.00	0.00	0.00	0.00	0.00	0.00
155	0.00	0.00	0.00	0.00	0.00	0.00	0.00	0.00	0.00	0.00	0.00	0.00	0.00	0.00	0.00	0.00	0.00	0.00	0.00
160	0.00	0.00	0.00	0.00	0.00	0.00	0.00	0.00	0.00	0.00	0.00	0.00	0.00	0.00	0.00	0.00	0.00	0.00	0.00
165	0.00	0.00	0.00	0.00	0.00	0.00	0.00	0.00	0.00	0.00	0.00	0.00	0.00	0.00	0.00	0.00	0.00	0.00	0.00
170	0.00	0.00	0.00	0.00	0.00	0.00	0.00	0.00	0.00	0.00	0.00	0.00	0.00	0.00	0.00	0.00	0.00	0.00	0.00
175	0.00	0.00	0.00	0.00	0.00	0.00	0.00	0.00	0.00	0.00	0.00	0.00	0.00	0.00	0.00	0.00	0.00	0.00	0.00
180	0.00	0.00	0.00	0.00	0.00	0.00	0.00	0.00	0.00	0.00	0.00	0.00	0.00	0.00	0.00	0.00	0.00	0.00	0.00



Table--4 UNIT: cd

C (DEG) γ (DEG)	285	290	295	300	305	310	315	320	325	330	335	340	345	350	355		
0	1082	1082	1082	1082	1082	1082	1082	1082	1082	1082	1082	1082	1082	1082	1082		
5	768	778	791	806	826	846	867	888	912	938	964	991	1017	1044	1070		
10	444	452	470	499	535	573	613	659	719	782	843	905	963	1019	1075		
15	354	357	366	380	398	416	439	490	570	656	742	829	916	1002	1088		
20	335	336	341	349	359	368	381	431	505	582	661	751	862	983	1104		
25	331	332	335	341	348	354	364	406	465	526	588	680	818	974	1131		
30	332	332	334	338	343	348	356	391	438	486	536	632	794	979	1164		
35	332	333	335	338	342	346	351	383	422	462	504	607	793	1001	1209		
40	268	271	281	297	314	330	347	379	415	452	490	602	807	1035	1262		
45	169	169	181	206	233	261	290	335	382	429	476	605	832	1078	1324		
50	150	148	148	149	151	154	160	224	298	372	448	606	860	1131	1401		
55	138	135	132	129	126	123	123	189	264	341	420	598	890	1196	1501		
60	126	122	119	116	113	110	109	142	181	222	268	466	831	1214	1594		
65	111	111	108	104	100	95.8	91.9	92.8	94.6	96.7	103	310	737	1186	1636		
70	76.3	77.5	77.8	77.5	77.0	76.6	76.0	75.2	74.4	73.6	75.4	262	650	1058	1471		
75	33.4	35.2	37.2	40.0	42.5	45.2	47.6	48.0	48.3	48.5	50.4	145	342	556	780		
80	2.80	3.39	6.28	11.8	17.4	23.1	28.4	27.7	26.6	25.6	25.0	36.1	61.3	89.9	122		
85	0.00	0.01	0.18	0.66	1.10	1.67	2.32	2.35	2.20	1.98	1.68	1.72	2.04	2.32	2.58		
90	0.00	0.00	0.00	0.00	0.00	0.00	0.00	0.00	0.00	0.00	0.00	0.00	0.00	0.00	0.00		
95	0.00	0.00	0.00	0.00	0.00	0.00	0.00	0.00	0.00	0.00	0.00	0.00	0.00	0.00	0.00		
100	0.00	0.00	0.00	0.00	0.00	0.00	0.00	0.00	0.00	0.00	0.00	0.00	0.00	0.00	0.00		
105	0.00	0.00	0.00	0.00	0.00	0.00	0.00	0.00	0.00	0.00	0.00	0.00	0.00	0.00	0.00		
110	0.00	0.00	0.00	0.00	0.00	0.00	0.00	0.00	0.00	0.00	0.00	0.00	0.00	0.00	0.00		
115	0.00	0.00	0.00	0.00	0.00	0.00	0.00	0.00	0.00	0.00	0.00	0.00	0.00	0.00	0.00		
120	0.00	0.00	0.00	0.00	0.00	0.00	0.00	0.00	0.00	0.00	0.00	0.00	0.00	0.00	0.00		
125	0.00	0.00	0.00	0.00	0.00	0.00	0.00	0.00	0.00	0.00	0.00	0.00	0.00	0.00	0.00		
130	0.00	0.00	0.00	0.00	0.00	0.00	0.00	0.00	0.00	0.00	0.00	0.00	0.00	0.00	0.00		
135	0.00	0.00	0.00	0.00	0.00	0.00	0.00	0.00	0.00	0.00	0.00	0.00	0.00	0.00	0.00		
140	0.00	0.00	0.00	0.00	0.00	0.00	0.00	0.00	0.00	0.00	0.00	0.00	0.00	0.00	0.00		
145	0.00	0.00	0.00	0.00	0.00	0.00	0.00	0.00	0.00	0.00	0.00	0.00	0.00	0.00	0.00		
150	0.00	0.00	0.00	0.00	0.00	0.00	0.00	0.00	0.00	0.00	0.00	0.00	0.00	0.00	0.00		
155	0.00	0.00	0.00	0.00	0.00	0.00	0.00	0.00	0.00	0.00	0.00	0.00	0.00	0.00	0.00		
160	0.00	0.00	0.00	0.00	0.00	0.00	0.00	0.00	0.00	0.00	0.00	0.00	0.00	0.00	0.00		
165	0.00	0.00	0.00	0.00	0.00	0.00	0.00	0.00	0.00	0.00	0.00	0.00	0.00	0.00	0.00		
170	0.00	0.00	0.00	0.00	0.00	0.00	0.00	0.00	0.00	0.00	0.00	0.00	0.00	0.00	0.00		
175	0.00	0.00	0.00	0.00	0.00	0.00	0.00	0.00	0.00	0.00	0.00	0.00	0.00	0.00	0.00		
180	0.00	0.00	0.00	0.00	0.00	0.00	0.00	0.00	0.00	0.00	0.00	0.00	0.00	0.00	0.00		



Model name	CCT(K)	Total Luminous (lm)	Power (W)	Luminous Efficacy (lm/W)
AOK-35WiE-NV-LV2-00-2770-T302-P	2700K	4524.3	35.79	126.41
AOK-35WiE-NV-LV2-00-3070-T302-P	3000K	4549.5	35.79	127.12
AOK-35WiE-NV-LV2-00-3570-T302-P	3500K	4591.6	35.79	128.29
AOK-35WiE-NV-LV2-00-4070-T302-P	4000K	4633.2	35.79	129.46
AOK-35WiE-NV-LV2-00-4570-T302-P	4500K	4673.1	35.79	130.57
AOK-35WiE-NV-LV2-00-5070-T302-P	5000K	4714.7	35.79	131.73
AOK-35WiE-NV-LV2-00-5770-T302-P	5700K	4740.5	35.79	132.45

According to the test report JAE190121-A-R

Scaled Methodology Explanation:

$$18W\ 3000K\ \text{eff} / 18W\ 2700K\ \text{eff} = 132.02 / 131.29 = 1.0056$$

$$18W\ 3500K\ \text{eff} / 18W\ 2700K\ \text{eff} = 133.24 / 131.29 = 1.0149$$

$$18W\ 4000K\ \text{eff} / 18W\ 2700K\ \text{eff} = 134.45 / 131.29 = 1.0241$$

$$18W\ 4500K\ \text{eff} / 18W\ 2700K\ \text{eff} = 135.61 / 131.29 = 1.0329$$

$$18W\ 5000K\ \text{eff} / 18W\ 2700K\ \text{eff} = 136.82 / 131.29 = 1.0421$$

$$18W\ 5700K\ \text{eff} / 18W\ 2700K\ \text{eff} = 137.56 / 131.29 = 1.0478$$

$$3000K\ \text{eff} = 2700K\ \text{eff} * 1.0056$$

$$3500K\ \text{eff} = 2700K\ \text{eff} * 1.0149$$

$$4000K\ \text{eff} = 2700K\ \text{eff} * 1.0241$$

$$4500K\ \text{eff} = 2700K\ \text{eff} * 1.0329$$

$$5000K\ \text{eff} = 2700K\ \text{eff} * 1.0421$$

$$5700K\ \text{eff} = 2700K\ \text{eff} * 1.0478$$



3. Test Equipment

Equipment ID	Equipment Name	Last Calibration Date	Next Calibration Date
ST-R-714	Goniophotometer system	Verified by D908S standard lamp	
ST-R-710	Standard Lamp	2019-02-12	2020-02-11
ST-R-711	Power Meter for Goniophotometer	2019-01-06	2020-01-05
Uncertainty: Photometric Measurement(Goniophotometer):1.62%			

4. Product Photo



***** END OF REPORT *****