



**LED HIGH BAY LIGHT  
FLOOD LIGHT**

**Better Performance  
Starts From Better Lighting**  
[www.aokledlight.com](http://www.aokledlight.com)

## > Features of I Series

### Construction

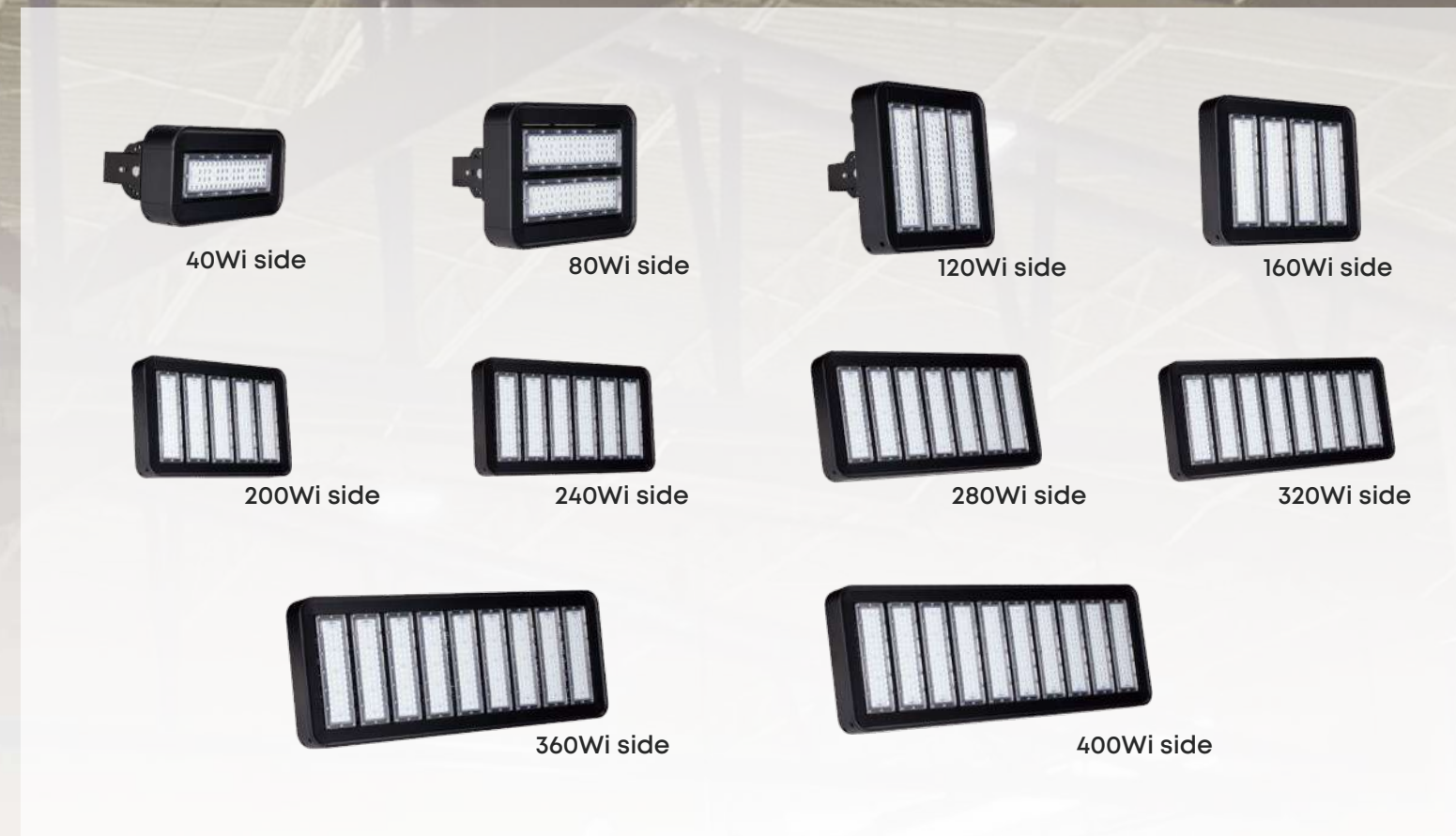
- Rugged low-profile die-cast aluminum housing.
- UV stabilized polyester powder paint finish for durability and corrosion resistance.
- Can be used as High / Low Bay Light, Flood Light, Tunnel Light, Area Light etc.
- Suitable for indoor and outdoor warehouse, stadium, factory applications.
- Individual bar design, easy for maintenance and replacement.

### Electrical

- Power range: 40W to 400W
- 1-10V/ PMW/ Timer dimming, 3 Timer Modes, Dim-to-Off with Standby Power  $\leq 0.5W$
- High-performance driver features over-voltage, under voltage, short-circuit and over temperature protection.
- Standard Universal Voltage: 100-277Vac, Input 50-60Hz. 277-480V as option.
- Total harmonic distortion:  $<20\%$
- Operating temperature:  $-40^{\circ}C$  to  $+50^{\circ}C$  ( $-40^{\circ}F$  to  $122^{\circ}F$ )
- Power factor  $> 0.9$



Note: Normal Voltage=100-277VAC, High Voltage=277-480VAC, please evaluate before choosing. For the power supply in the United States and Canada, in case the input voltage fluctuation  $\geq 240V$  the High Voltage solution is highly recommended for performance stability. Improper selection will cause damage to the driver or the light.



# > Application Reference



# Parameter Table

Electrical Data						
Model	AOK-40Wi	AOK-80Wi	AOK-120Wi	AOK-160Wi	AOK-200Wi	
Power	40W	80W	120W	160W	200W	
Input voltage	Normal Voltage=100-277VAC, High Voltage=277-480VAC, please read *Note-1 before choosing.					
THD	<20%					
PF	>0.90					
Control Option	DALI, 1-10V/ PWM / timer dimming, Nema, Zhaga, Presence detection sensor. Dim-to-Off with standby power <= 0.5W.					
Operating temperature	-40°C to 50°C (-40 °F to 122 °F)					
Driver brand	Meanwell					
Surge Protection	10kV / 20kV optional					
Photometric Data						
Luminous flux (lm) (CRI 70Ra, 4000K) (Std Dev ±5%)	5050-30D	6520	13040	19560	26080	32600
	3030-30*60D	5800	11600	17400	23200	29000
	3030-60D	5800	11600	17400	23200	29000
	5050-60D	6640	13280	19920	26560	33200
	3030-90*100D	5800	11600	17400	23200	29000
	5050-90*100D	6640	13280	19920	26560	33200
	3030-120D	5600	11200	16800	22400	28000
	5050-120D	6440	12880	19320	25760	32200
ULOR	= 0%, @ Luminaire inclination 0°					
CCT	3000K, 4000K, 5000K, 5700K, 6500K					
CRI	70Ra, 80Ra, 90Ra					
Beam angle	30D/30*60D/90*100D/120D					
Mechanical Data						
IP/IK	IP65/IK10, according to standard EN 60529 and EN 62262					
Vibration resistance	3G, conform to standard IEC 68-2-6.					
SCx	Side: 0.017809m <sup>2</sup> ; Front: 0.047484m <sup>2</sup>	Side: 0.022938m <sup>2</sup> ; Front: 0.047483m <sup>2</sup>	Side: 0.041527m <sup>2</sup> ; Front: 0.063659m <sup>2</sup>	Side: 0.036653m <sup>2</sup> ; Front: 0.049935m <sup>2</sup>	Side: 0.041666m <sup>2</sup> ; Front: 0.073974m <sup>2</sup>	
Housing/Materials	Heavy-duty die-cast aluminum (EN AC-46100)					
Surface treatment	Anti-UV thermosetting polyester / 80 micron epoxy primer + Anti-UV thermosetting polyester (for extremely corrosive environments).					
Painting	Black, Custom request					
Cable	Pre-wired with a 30 cm cable (Other lengths on request)					
Mounting	Yoke mount					
LED Manufacturer	LUMILEDS					
LED model	Lumileds 3030/Lumileds 5050					
Maximum Current	0.45A	0.90A	1.35A	1.80A	2.25A	
Lens	Polycarbonate (Better impact resistance than glass)					
Others						
Lifespan	L90B10 > 100000hrs, @Ta 25°C					
Warranty	5 years (Warranty extension up to 10 years on request)					
Certification	●UL authorized lab in accordance with IESNA LM-79 & LM-80; ●Listed to UL 1598 and UL 8750, UL File number: E364473; ●Suitable for wet locations; ●TUV GS CE Rosh Compliant, For other certificates please request					
Product Size	300*150*180mm / 11.8*5.9*7.1 inches	300*230*180mm / 11.8*9.1*7.1 inches	300*310*200mm / 11.8*12.2*7.9 inches	300*390*200mm / 11.8*15.4*7.9 inches	300*470*200mm / 11.8*18.5*7.9 inches	
Net Weight	3.3kg / 7.28 lbs	4.5kg / 9.92 lbs	5.9kg / 13.00 lbs	7.2kg / 15.87 lbs	8.6kg / 18.96 lbs	
Carton Size	370*310*240mm / 14.6*12.2*9.4 inches	370*310*240mm / 14.6*12.2*9.4 inches	370*310*240mm / 14.6*12.2*9.4 inches	450*370*240mm / 17.7*14.6*9.4 inches	530*370*240mm / 20.9*14.6*9.4 inches	
Gross Weight	4.56kg / 10.05 lbs	5.74kg / 12.65 lbs	6.88kg / 15.17 lbs	8.24kg / 18.17 lbs	9.1kg / 20.06 lbs	
Application field	Suitable for highbay/lowbay lighting, stadium, tunnel light, loading bay					
Important note!	The provided information is solely for reference; the official measurement report holds higher authority.					

Electrical Data						
Model	AOK-240Wi	AOK-280Wi	AOK-320Wi	AOK-360Wi	AOK-400Wi	
Power	240W	280W	320W	360W	400W	
Input voltage	Normal Voltage=100-277VAC, High Voltage=277-480VAC, please read *Note-1 before choosing.					
THD	<20%					
PF	>0.90					
Control Option	DALI, 1-10V/ PWM / timer dimming, Nema, Zhaga, Presence detection sensor. Dim-to-Off with standby power <= 0.5W.					
Operating temperature	-40°C to 50°C (-40 °F to 122 °F)					
Driver brand	Meanwell					
Surge Protection	10kV / 20kV optional					
Photometric Data						
Luminous flux (lm) (CRI 70Ra, 4000K) (Std Dev ±5%)	5050-30D	39120	45640	52160	58680	65200
	3030-30*60D	34800	40600	46400	52200	58000
	3030-60D	34800	40600	46400	52200	58000
	5050-60D	39840	46480	53120	59760	66400
	3030-90*100D	34800	40600	46400	52200	58000
	5050-90*100D	39840	46480	53120	59760	66400
	3030-120D	33600	39200	44800	50400	56000
	5050-120D	38640	45080	51520	57960	64400
ULOR	= 0%, @ Luminaire inclination 0°					
CCT	3000K, 4000K, 5000K, 5700K, 6500K					
CRI	70Ra, 80Ra, 90Ra					
Beam angle	30D/30*60D/90*100D/120D					
Mechanical Data						
IP/IK	IP65/IK10, according to standard EN 60529 and EN 62262					
Vibration resistance	3G, conform to standard IEC 68-2-6.					
SCx	Side: 0.036248m <sup>2</sup> ; Front: 0.060525m <sup>2</sup>	Side: 0.038348m <sup>2</sup> ; Front: 0.066603m <sup>2</sup>	Side: 0.037822m <sup>2</sup> ; Front: 0.070343m <sup>2</sup>	Side: 0.036346m <sup>2</sup> ; Front: 0.099778m <sup>2</sup>	Side: 0.037735m <sup>2</sup> ; Front: 0.105783m <sup>2</sup>	
Housing/Materials	Heavy-duty die-cast aluminum (EN AC-46100)					
Surface treatment	Anti-UV thermosetting polyester / 80 micron epoxy primer + Anti-UV thermosetting polyester (for extremely corrosive environments).					
Painting	Black, Custom request					
Cable	Pre-wired with a 30 cm cable (Other lengths on request)					
Mounting	Yoke mount					
LED Manufacturer	LUMILEDS					
LED model	Lumileds 3030/Lumileds 5050					
Maximum Current	2.66A	3.10A	3.50A	4.10A	4.40A	
Lens	Polycarbonate (Better impact resistance than glass)					
Others						
Lifespan	L90B10 > 100000hrs, @Ta 25°C					
Warranty	5 years (Warranty extension up to 10 years on request)					
Certification	●UL authorized lab in accordance with IESNA LM-79 & LM-80; ●Listed to UL 1598 and UL 8750, UL File number: E364473; ●Suitable for wet locations; ●TUV GS CE Rosh Compliant, For other certificates please request					
Product Size	300*500*200mm / 11.8*19.7*7.9 inches	300*640*200mm / 11.8*25.2*7.9 inches	300*720*200mm / 11.8*28.3*7.9 inches	300*800*200mm / 11.8*31.5*7.9 inches	300*800*200mm / 11.8*31.5*7.9 inches	
Net Weight	9.6kg / 21.16 lbs	10.5kg / 23.15 lbs	11.5kg / 25.35 lbs	15kg / 33.07 lbs	16.5kg / 36.38 lbs	
Carton Size	620*370*240mm / 24.4*14.6*9.4 inches	690*370*240mm / 27.2*14.6*9.4 inches	780*370*240mm / 30.7*14.6*9.4 inches	860*370*240mm / 33.9*14.6*9.4 inches	940*370*240mm / 37.0*14.6*9.4 inches	
Gross Weight	10.49kg / 23.13 lbs	12.44kg / 27.43 lbs	13.36kg / 29.45 lbs	16.9kg / 37.26 lbs	17.5kg / 38.58 lbs	
Application field	Suitable for highbay/lowbay lighting, stadium, tunnel light, loading bay					
Important note!	The provided information is solely for reference; the official measurement report holds higher authority.					

\* Note-1: For the power supply in the United States and Canada, in case the input voltage fluctuation ≥240V the High Voltage solution is highly recommended for performance stability. Improper selection will cause damage to the driver or the light.

## I Series Specification Sheet

\*Due to the constant improvements in product development, individual parameters might change. Please refer to our sales or R&D team for most up-to-date content as specifications are subject to change without notice.

wally@aokledlight.com  
+1 626-986-4050 (US)  
+86 755 2357 9148 (CN)

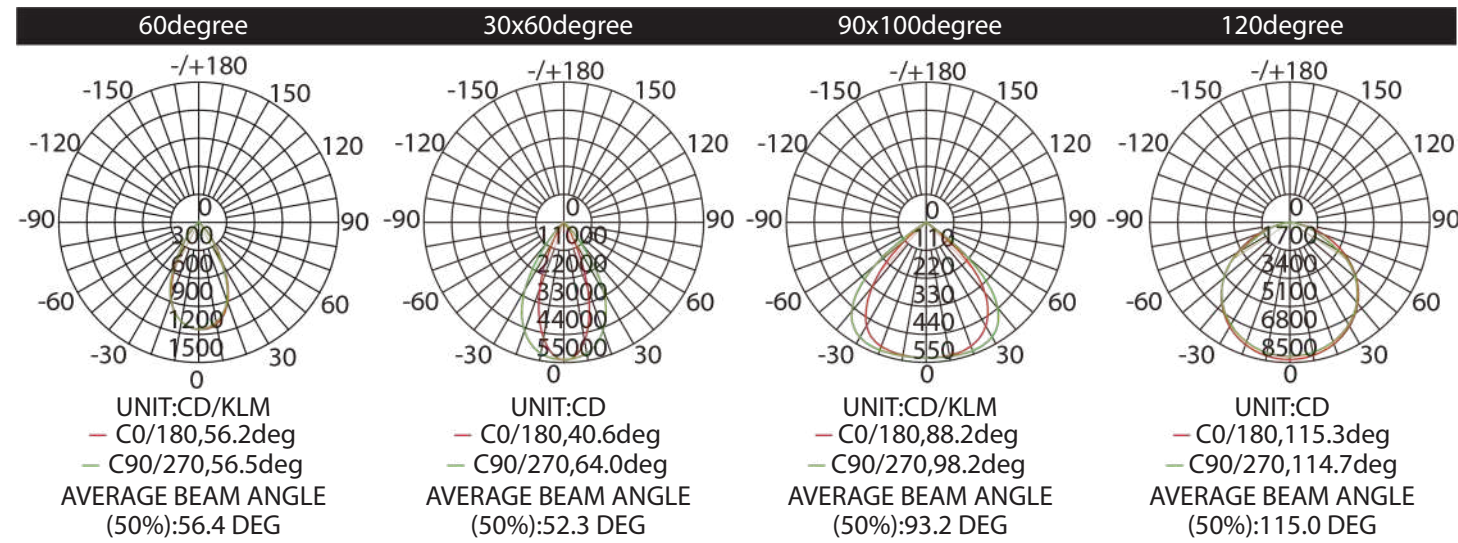
©2023 AOK LED LIGHT CO., LTD. All Right Reserved.



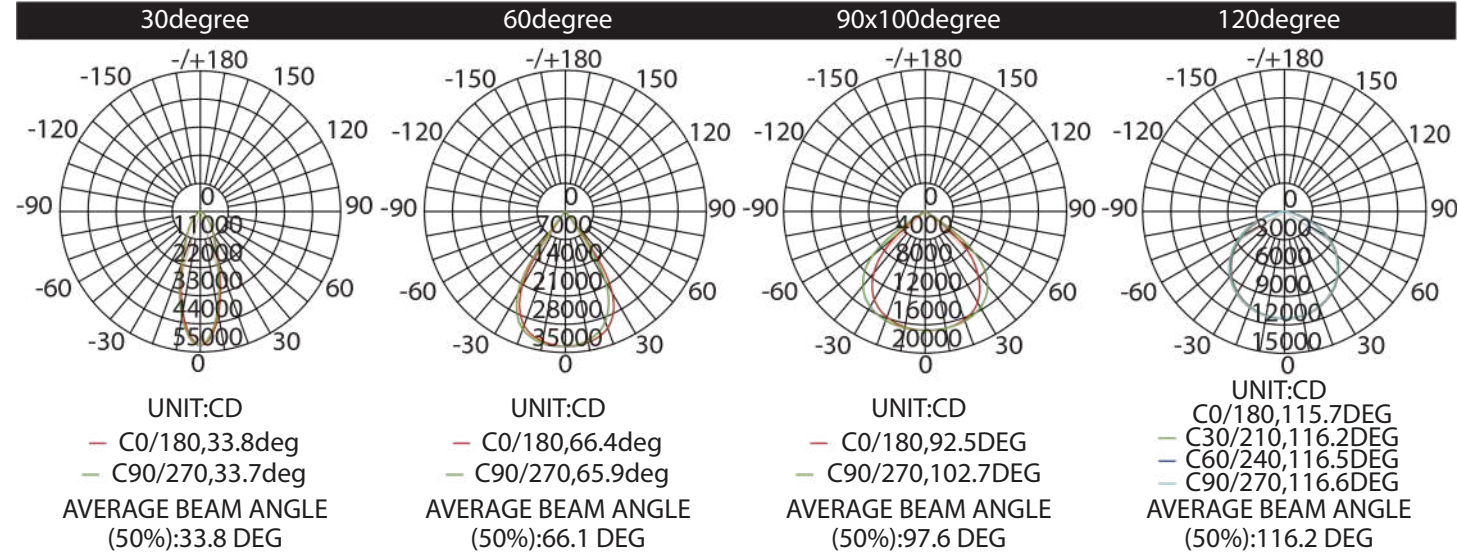
# Ordering Information

WATTS	VOLTAGE	LED CHIPS	TYPE OF SENSOR	CCT&CRI	DISTRIBUTION	HOUSING	OPTIONS
40W	NV=100-277V	L3=Lumileds3030	00=Without Sensor	3070=3000K 70CRI	30D=30deg	BK=Black	4FT cord
80W	HV=277V-480V	L5=Lumileds5050	DV=Dimmable	4070=4000K 70CRI	3060D=30X60deg	WH=White	Emergency Pack
120W				5070=5000K 70CRI	60D=60deg		
160W				5770=5700K 70CRI	90100D=90x100deg		
200W				6570=6500K 70CRI	120D=120deg		
240W				3080=3000K 80CRI			
280W				4080=4000K 80CRI			
320W				5080=5000K 80CRI			
360W				5780=5700K 80CRI			
400W				6580=6500K 80CRI			

## 130LM/W Version Photometry

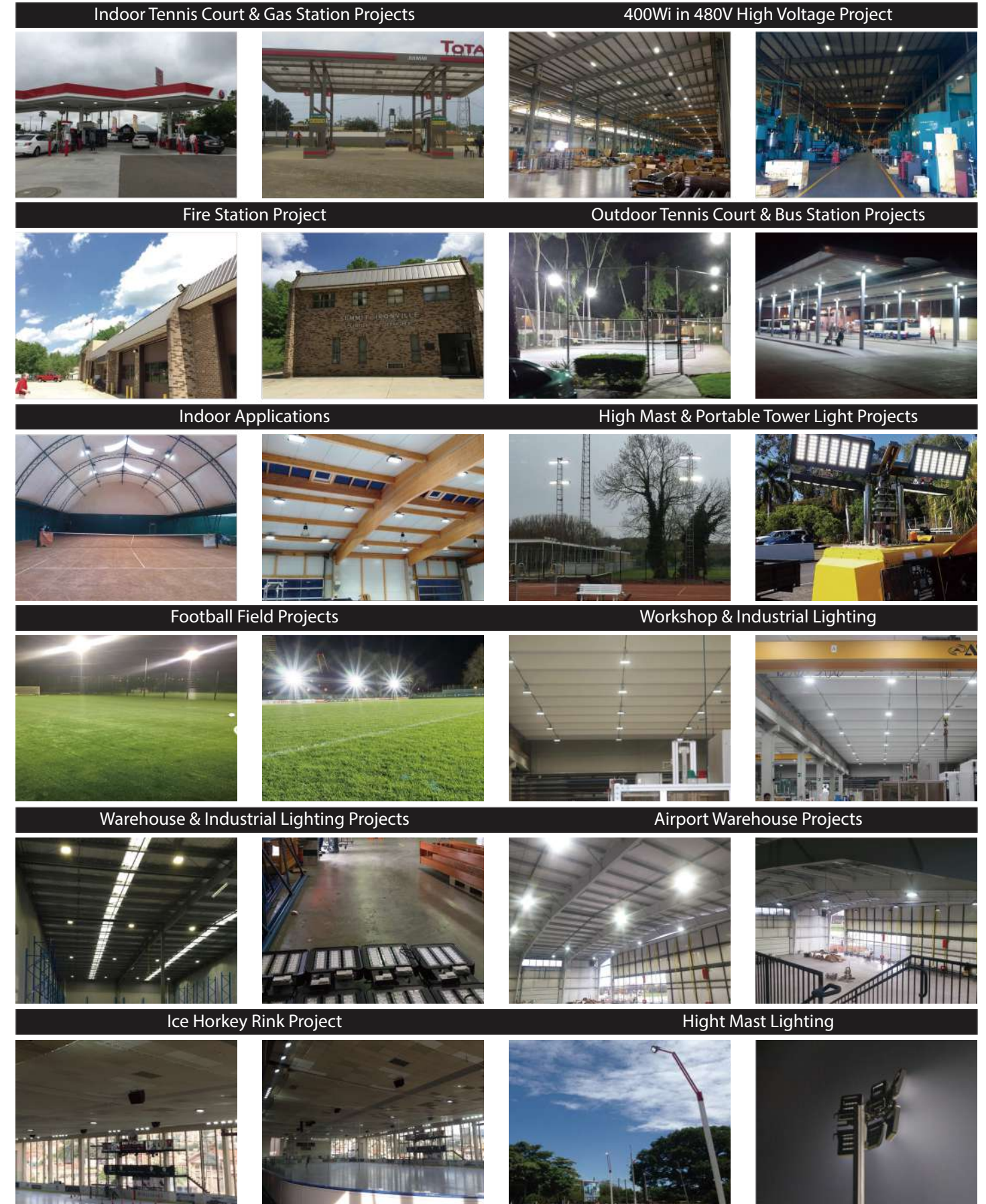


## 170LM/W Version Photometry



All published Luminaire photometric testing performed to IESNA LM-79-08 standards by a NVLAP accredited Laboratory.

# Project Demonstration



### I Series Specification Sheet

\*Due to the constant improvements in product development, individual parameters might change. Please refer to our sales or R&D team for most up-to-date content as specifications are subject to change without notice.



# Illuminate Your Future



5 Year Limited Warranty,  
10 Year Preferred Warranty.  
Please consult with our sales for detailed agreement.

wally@aokledlight.com  
www.aokledlight.com  
+1 626-986-4050 (US)  
+86 755 2357 9148 (CN)

Manufacturing: Building 1 & 4, St. George's Science and Technology Industrial Park, Shajing Street, Shenzhen, China, 518124.  
Fuzhou HQ: Room 301, Yujing Business Center Zone 1, No. 12 Baihuazhou road, Cangshan district, Fuzhou, China, 350007  
NorthAmerica HQ: 18541 E Gale Ave, City of Industry, CA91748 USA

Copyright ©2023 AOK LED LIGHT CO., LTD. All Right Reserved.