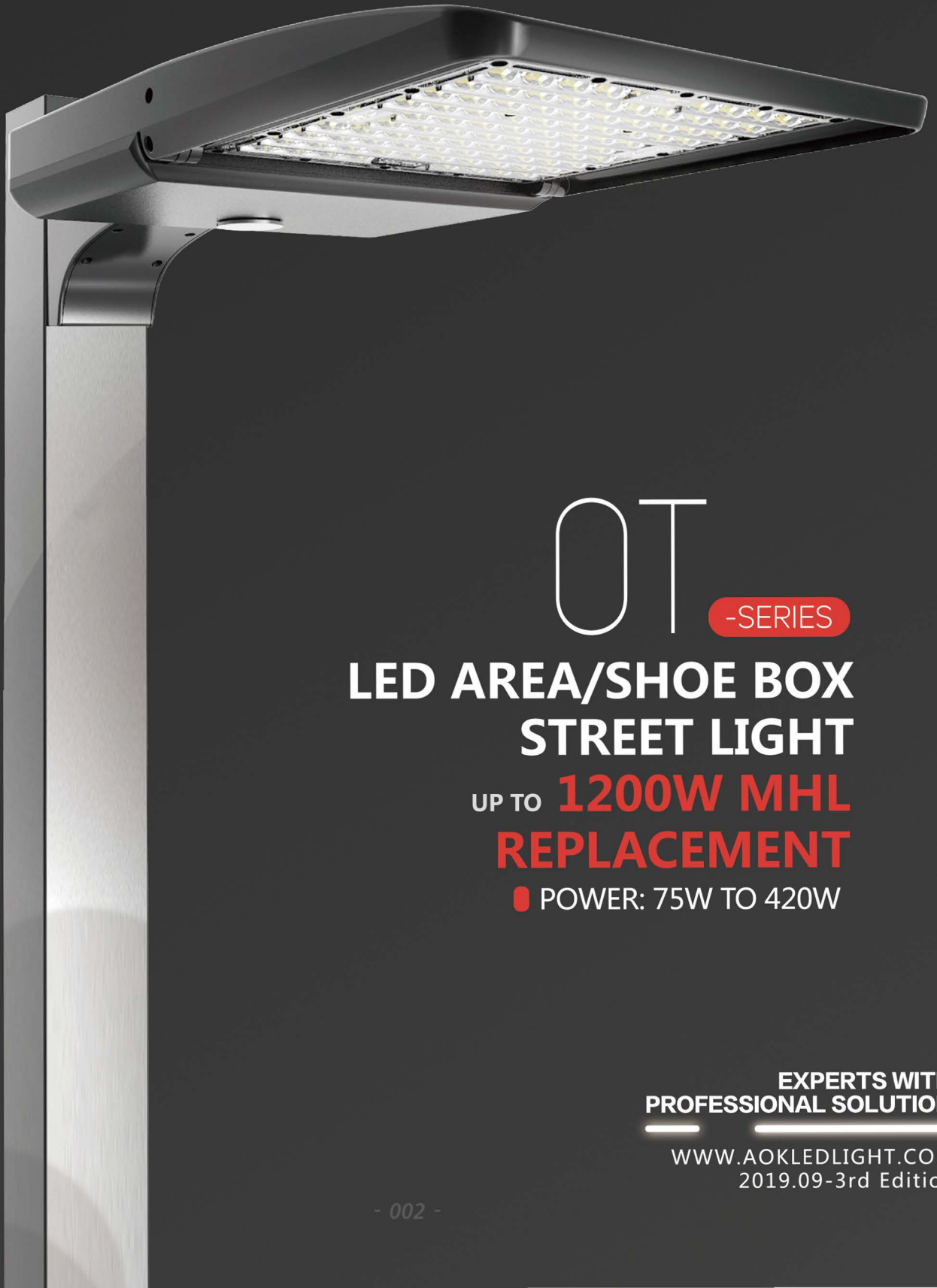




Quality, Honesty, Service and Innovation



OT **-SERIES**

**LED AREA/SHOE BOX
STREET LIGHT**

UP TO **1200W MHL
REPLACEMENT**

● POWER: 75W TO 420W

**EXPERTS WITH
PROFESSIONAL SOLUTION**

WWW.AOKLEDLIGHT.COM
2019.09-3rd Edition

LED AREA/SHOE BOX/STREET LIGHT

OPTICAL SYSTEM

- Precision engineered lens made of optical grade Mitsubishi polycarbonate for maximum light intensity.
- Type III, Type IV, Type V light patterns are available, right distribution for right project.
- Designed to provide the right amount of light on any small or medium lot, no matter the shape.
- Delivers improved visual comfort by lower glare and providing a wider smoother and more uniform light output.
- Available in 3000K, 4000K, 5000K, 5700K, 6500K CCT.
- Efficacy 140lm/W and 170lm/W optional, higher lumen output, precision light pattern ensure more energy saved.
- Cutoff classification: Cut-off, no uplight pollution.
- Minimum CRI of 70, 80, and 90 optional.

ELECTRICAL

- Standard universal voltage (100-240/277Vac) input, 50/60Hz, 347/480V option.
- L90 calculated life: 50,000+ hours.
- 0-10V/ PMW/ Timer dimming, 3 Timer Modes, Dim-to-Off with Standby Power ≤ 0.5W.
- Constant current driver, 100-277Vac, 50-60Hz, 347/480V.
- High efficiency driver: up to 93.5%, minimum efficiency 87.5%.
- Input Surge Protection: 6kV line-line, 10kV line-earth.
- Photocell, PIR sensor, 20KV SPD available.
- Operating temperature rating of -40°F to 122°F (-40°C to 50°C)

up to 170lm/w

OT SERIES

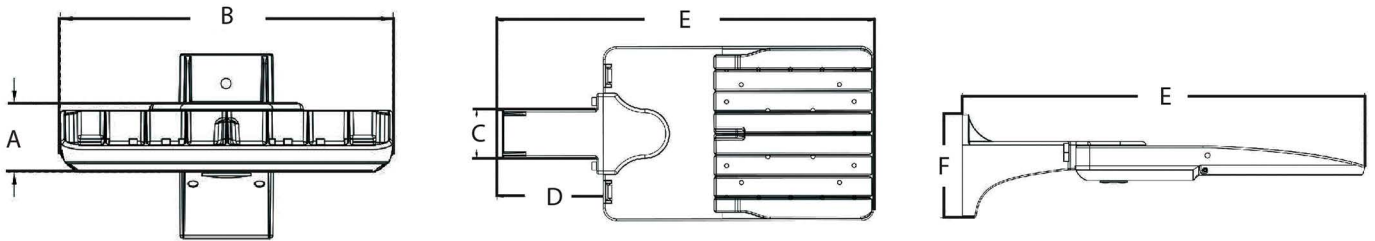


(Light shield available)

CERTIFICATION/LISTINGS



FIXTURE DIMENSIONS



A	B	C	D	E	F
Dimensions of 75W, 115W and 145W models					
56mm/ 2.2"	270mm/ 10.6"	77mm/ 3.0"	165mm/ 6.49"	585mm/ 23"	150mm/ 5.9"
Dimensions of 180W, 200W, 230W and 250W models					
56mm/ 2.2"	350mm/ 13.7"	77mm/ 3"	165mm/ 6.49"	679mm/ 26.7"	150mm/ 5.9"
Dimensions of 300W, 420W models					
75mm/ 3"	360mm / 14"	77mm/ 3.0"	165mm/ 6.49"	750mm/ 30"	150mm/ 5.9"

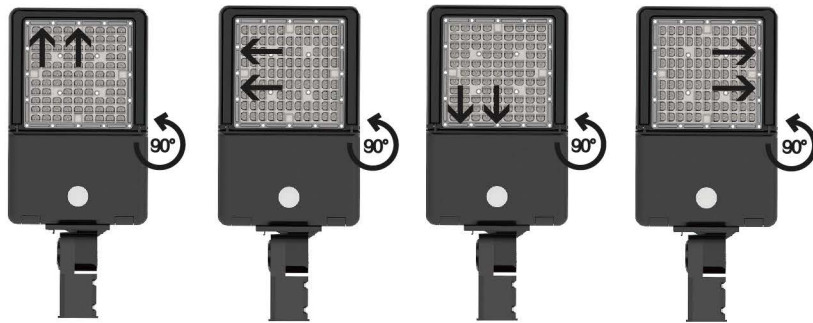
ORDERING INFORMATION

AOK									
WATTAGE	VOLTAGE	LED CHIPS	TYPE OF SENSOR	CCT & CRI	DISTRIBUTION	MOUNT	HOUSING	OPTIONS	
75WoT	NV=100-277V	L3=LUMILEDS3030	00=Without sensor	3070=3000K 70CRI	T3=TYPE 3	A=Slip Fitter	BK=Black	SPD10KV	
115WoT	HV=347/480V	L5=LUMILEDS5050	SN=Motion sensor	4070=4000K 70CRI	T4=TYPE 4	B=Adjustable Arm	BZ=Bronze	SPD20KV	
145WoT			PH=Photocell	5070=5000K 70CRI	T5=TYPE 5	Mount	WH=White	DIP	
180WoT			DV=Dimmable	5770=5700K 70CRI	T512=T5WQ	C=Yoke Mount	SG=Silver Gray	SWITCH	
200WoT				3080=3000K 80CRI		D=Slide and Lock	RD=Red		
230WoT				4080=4000K 80CRI		Mount	BL=Blue		
250WoT				5080=5000K 80CRI		E=Square Pole Mount			
300WoT				5780=5700K 80CRI		F=Round Pole Mount			
420WoT						G=Trunnion Mount			



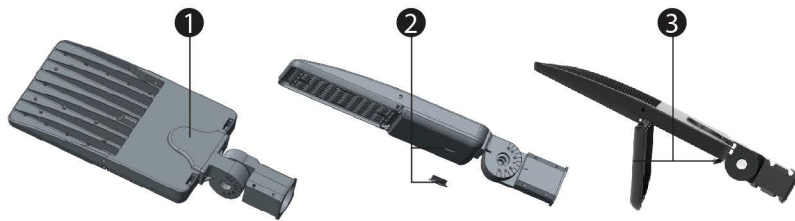
LED AREA/SHOE BOX/STREET LIGHT

EASY LIGHT DISTRIBUTION



The oT area luminaire comes standard with field-rotatable optics. Simply rotate the lens and get light distribution in different directions!

SMART DESIGN



1. Space reserved for photocell sensor
2. Space reserved for occupancy sensor with waterproof seal
3. Tool-free maintenance

MECHANICAL

- Designed for commercial and industrial applications, providing cooler operating temperatures, brighter light and longer LED span.
- The housing is made of die-casting aluminum alloy and utilizes external fins ensure greater heat dissipation.
- Anti-corrosion coating.
- Light in Weight:
11lbs(small), 12lbs(medium), 23lbs(large).

MOUNTING

- 5 different mounting brackets simplify your installation job, make installation to any style of pole quicker and easier.
- Customized pole adapters available for special installation.

CERTIFICATES

- AOK oT area luminaires have been tested by UL authorized lab in accordance with IESNA LM-79 & LM-80.
- Listed to UL 1598 and UL 8750, UL File number: E497331.
- FCC certified.
- DLC Premium qualified, eligible for rebates.
- Suitable for wet locations.

TECHNICAL SPECIFICATIONS

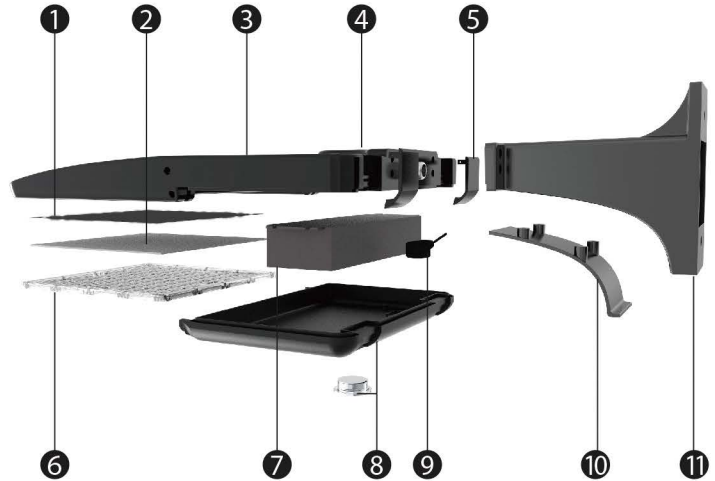
MODEL	LEDS	WATTS	LUMINAIRE LUMEN OUTPUT	REPLACE MHL	FIXTURE DIMENSION	NW	IP & IK
75WoT	Lumileds 5050	75W	13121	300W	23*11*2.2" (585*270*56mm)	11lbs (4.8kg)	IP66 IK10
115WoT	Lumileds 5050	115W	18689	400W	23*11*2.2" (585*270*56mm)	11lbs (4.8kg)	
145WoT	Lumileds 5050	145W	24699	500W	23*11*2.2" (585*270*56mm)	11lbs (4.8kg)	
180WoT	Lumileds 5050	180W	30870	600W	26.7*14*2.2" (679*350*56mm)	12lbs (5.5kg)	
200WoT	Lumileds 5050	200W	33012	750W	26.7*14*2.2" (679*350*56mm)	12lbs (5.5kg)	
230WoT	Lumileds 5050	230W	36162	1000W	26.7*14*2.2" (679*350*56mm)	12lbs (5.5kg)	
300WoT	Lumileds 5050	300W	43500	1200W	30*14*3.0" (750*360*75mm)	23lbs (10.5kg)	
420WoT	Lumileds 5050	420W	60060	1500W	30*14*3.0" (750*360*75mm)	23lbs (10.5kg)	

MODEL	LEDS	WATTS	LUMINAIRE LUMEN OUTPUT	REPLACE MHL	FIXTURE DIMENSION	NW	IP & IK
75WoT	Lumileds 3030	75W	10764	200W	23*11*2.2" (585*270*56mm)	11lbs (4.8kg)	IP66 IK10
115WoT	Lumileds 3030	115W	15066	300W	23*11*2.2" (585*270*56mm)	11lbs (4.8kg)	
145WoT	Lumileds 3030	145W	19522	400W	23*11*2.2" (585*270*56mm)	11lbs (4.8kg)	
180WoT	Lumileds 3030	180W	25648	500W	26.7*14*2.2" (679*350*56mm)	12lbs (5.5kg)	
200WoT	Lumileds 3030	200W	28058	600W	26.7*14*2.2" (679*350*56mm)	12lbs (5.5kg)	
230WoT	Lumileds 3030	230W	31123	750W	26.7*14*2.2" (679*350*56mm)	12lbs (5.5kg)	
250WoT	Lumileds 3030	250W	32500	850W	26.7*14*2.2" (679*350*56mm)	12lbs (5.5kg)	
300WoT	Lumileds 3030	300W	37500	1000W	30*14*3.0" (750*360*75mm)	23lbs (10.5kg)	



CONSTRUCTION FEATURES

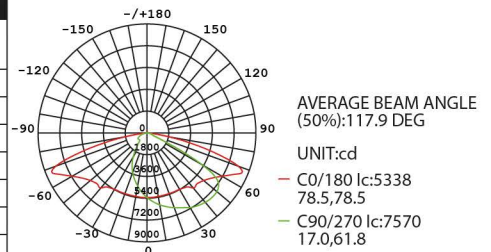
1. Super efficient heat dissipation layer
2. Light source: PCB board with LEDs
3. Die casting aluminum unibody main housing, IP66
4. Space for 5/7 pin receptacle upgradable for photo-cell sensor and smart systems
5. Tool free buckle to driver access panel
6. Optical grade rotatable PC lens Type III / IV / V
7. Top level 1-10V dimmable driver 100-277V / 347V / 480V optional
8. Tool free driver access panel with space reserved for occupancy sensor covered by removable cap fits with Wattstopper FSP sensor
9. Surge protection device
10. Bracket access panel for wiring
11. Exchangable bracket fits round / square pole. Other brackets optional such as yoke, trunnion, etc



PHOTOMETRY

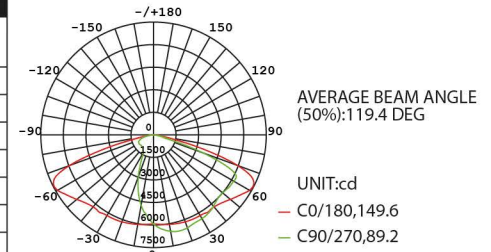
TYPE III MEDIUM DISTRIBUTION (160-170LM/W)

Wattage		3000K/70CRI	4000K/70CRI	5000K/70CRI	5700K/70CRI
	BUG Rating	Luminaire Lumen Output	Luminaire Lumen Output	Luminaire Lumen Output	Luminaire Lumen Output
75W	B2-U1-G2	12876	12998	13121	13182
115W	B3-U0-G2	18375	18532	18689	18767
145W	B3-U0-G3	24018	24358	24699	24869
180W	B3-U0-G3	29970	30420	30870	31096
200W	B4-U0-G3	32092	32552	33012	33243
230W	B4-U0-G3	35182	35672	36162	36408
300W	B4-U0-G4	47228	48079	49353	49590
420W	B4-U0-G5	58508	59561	61141	61434



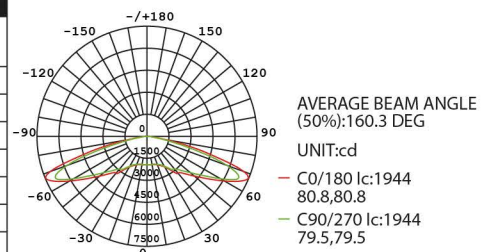
TYPE IV MEDIUM DISTRIBUTION (160-170LM/W)

Wattage		3000K/70CRI	4000K/70CRI	5000K/70CRI	5700K/70CRI
	BUG Rating	Luminaire Lumen Output	Luminaire Lumen Output	Luminaire Lumen Output	Luminaire Lumen Output
75W	B3-U0-G2	12876	12998	13121	13182
115W	B3-U0-G3	18375	18532	18689	18767
145W	B3-U0-G3	24018	24358	24699	24869
180W	B3-U0-G4	29970	30420	30870	31096
200W	B4-U0-G4	32092	32552	33012	33243
230W	B4-U0-G4	35182	35672	36162	36408
300W	B4-U0-G5	46438	47275	48529	48761
420W	B4-U0-G5	57532	58566	60119	60407



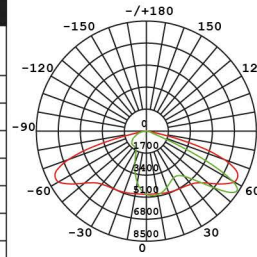
TYPE V MEDIUM DISTRIBUTION (160-170LM/W)

Wattage		3000K/70CRI	4000K/70CRI	5000K/70CRI	5700K/70CRI
	BUG Rating	Luminaire Lumen Output	Luminaire Lumen Output	Luminaire Lumen Output	Luminaire Lumen Output
75W	B4-U0-G2	12876	12998	13121	13182
115W	B4-U0-G2	18375	18532	18689	18767
145W	B5-U0-G3	24018	24358	24699	24869
180W	B5-U0-G4	29970	30420	30870	31096
200W	B5-U0-G4	32092	32552	33012	33243
230W	B5-U0-G4	35182	35672	36162	36408
300W	B5-U0-G4	48157	49024	50324	50565
420W	B5-U0-G5	59659	60732	62343	62641



TYPE III MEDIUM DISTRIBUTION (130-140LM/W)

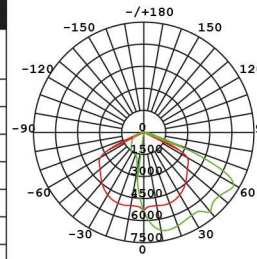
Wattage		3000K/70CRI	4000K/70CRI	5000K/70CRI	5700K/70CRI
	BUG Rating	Luminaire Lumen Output	Luminaire Lumen Output	Luminaire Lumen Output	Luminaire Lumen Output
75W	B2-U0-G2	10425	10650	10764	10875
115W	B3-U0-G3	14720	14950	15066	15180
145W	B3-U0-G3	18560	19140	19522	19575
180W	B3-U0-G3	23040	25200	25648	26100
200W	B3-U0-G3	25600	27000	28058	28000
230W	B3-U0-G3	29440	29900	31123	31280
300W	B4-U0-G4	34500	36000	37200	37500



AVERAGE BEAM ANGLE (50%):119.8 DEG
 UNIT:cd
 - C0/180 Ic:4873
 76.2,76.2
 - C90/270 Ic:4968
 20.8,66.4

TYPE IV MEDIUM DISTRIBUTION (130-140LM/W)

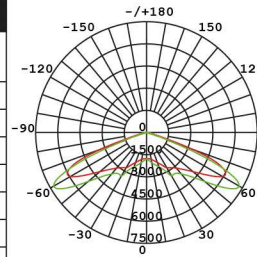
Wattage		3000K/70CRI	4000K/70CRI	5000K/70CRI	5700K/70CRI
	BUG Rating	Luminaire Lumen Output	Luminaire Lumen Output	Luminaire Lumen Output	Luminaire Lumen Output
75W	B2-U0-G2	10425	10650	10764	10875
115W	B2-U0-G2	14720	14950	15066	15180
145W	B3-U0-G2	18560	19140	19522	19575
180W	B3-U0-G3	23040	25200	25648	26100
200W	B3-U0-G3	25600	27000	28058	28000
230W	B3-U0-G4	29440	29900	31123	31280
300W	B4-U0-G4	34500	36000	37200	37500



AVERAGE BEAM ANGLE (50%):101.8 DEG
 UNIT:cd
 - C0/180 Ic:5314
 63.6,63.6
 - C90/270 Ic:6514
 7.8,68.6

TYPE V MEDIUM DISTRIBUTION (130-140LM/W)

Wattage		3000K/70CRI	4000K/70CRI	5000K/70CRI	5700K/70CRI
	BUG Rating	Luminaire Lumen Output	Luminaire Lumen Output	Luminaire Lumen Output	Luminaire Lumen Output
75W	B3-U0-G2	10425	10650	10764	10875
115W	B4-U0-G2	14720	14950	15066	15180
145W	B4-U0-G2	18560	19140	19522	19575
180W	B5-U0-G3	23040	25200	25648	26100
200W	B5-U0-G3	25600	27000	28058	28000
230W	B5-U0-G4	29440	29900	31123	31280
300W	B5-U0-G4	34500	36000	37200	37500



AVERAGE BEAM ANGLE (50%):146.0 DEG
 UNIT:cd
 - C0/180 Ic:1786
 74.1,74.1
 - C90/270 Ic:1786
 71.9,71.9

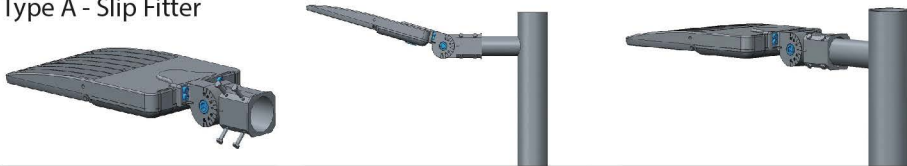
All published Luminaire photometric testing performed to IESNA LM-79-08 standards by a NVLAP accredited Laboratory.

ACCESSORIES: ORDER SEPARATELY



ACCESSORIES: ORDER SEPARATELY

Type A - Slip Fitter

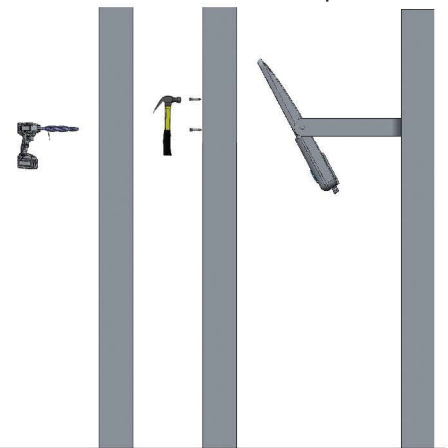


Type B - Adjustable Arm Mount

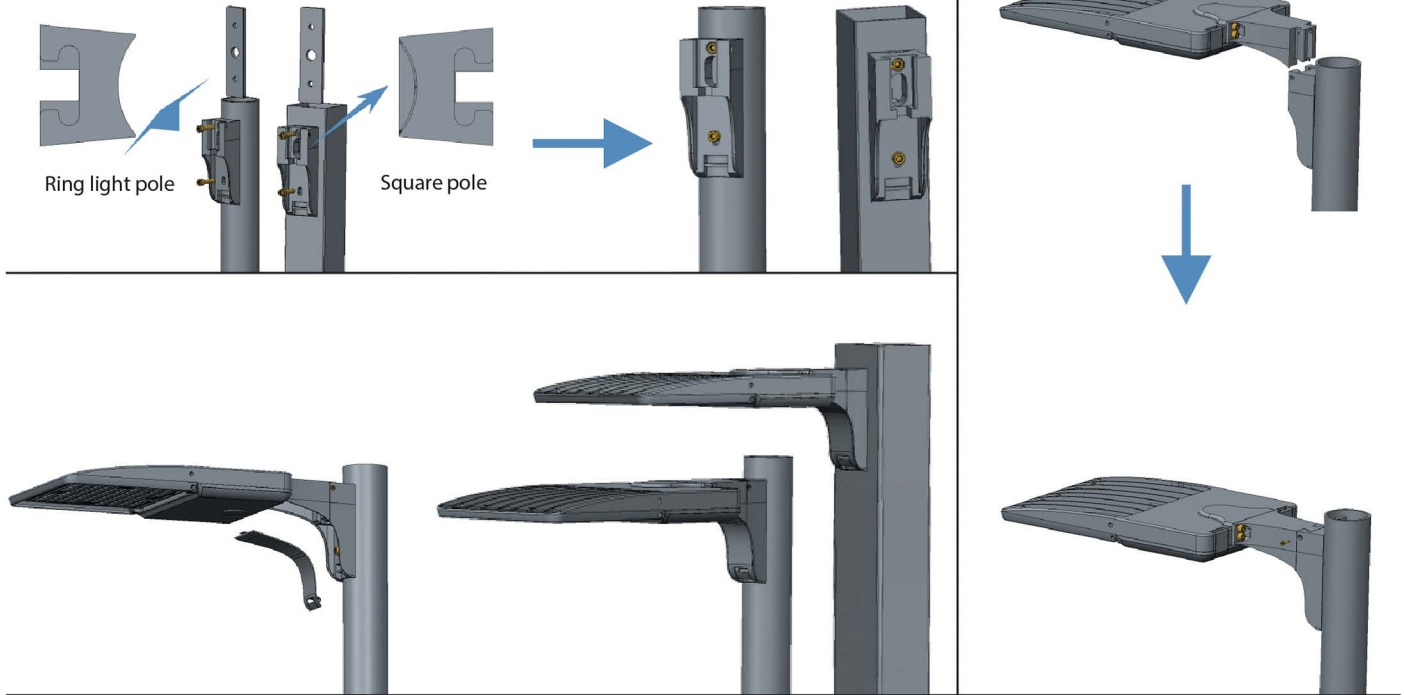
Designed for easy installation Simple, single-person installation is the key to, making the oT Area Luminaire easy to work with, no matter the job site.



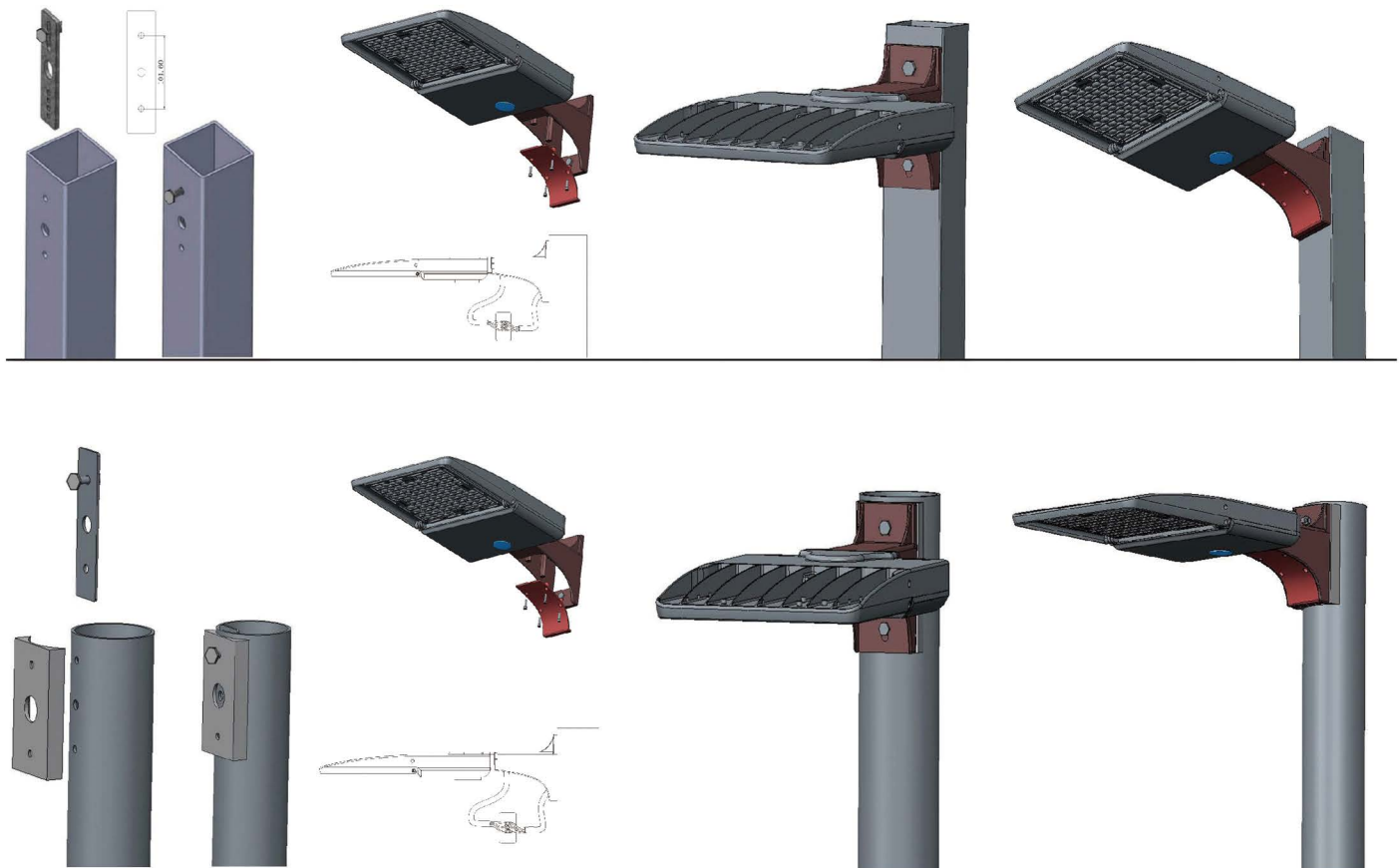
Type C - Yoke Mount U Shape Bracket



Type D - Slide and Lock Mount (for square and round poles)

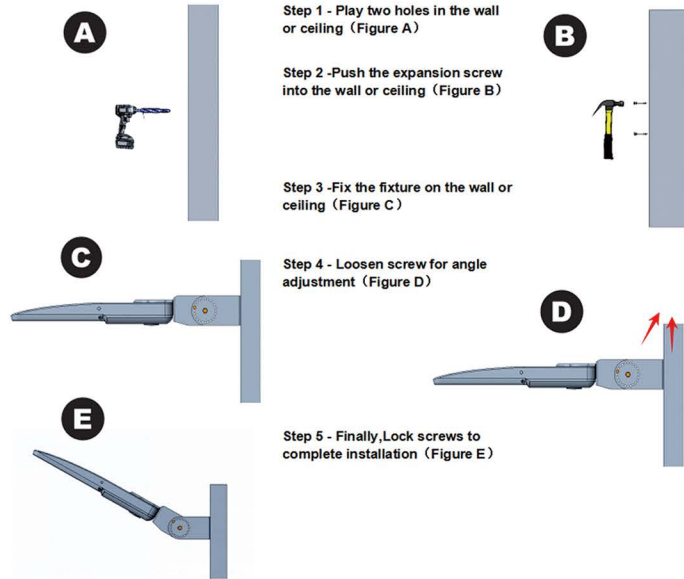


Type E / F - Direct Arm Mount (for Square or Round poles)

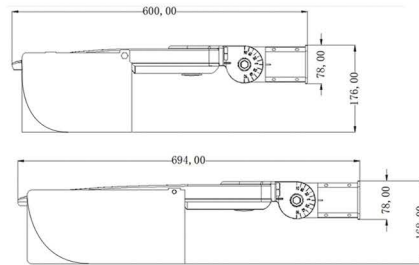


AOK OT LED area product comes with integral universal mounting, which allows the luminaire to mount to virtually any existing drill hole pattern on either square or round poles.

Bracket G installation method

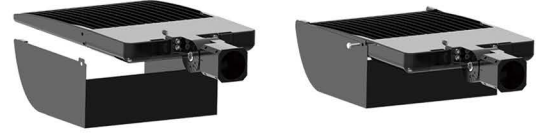


LIGHT SHIELD AND INSTALLATION METHODS



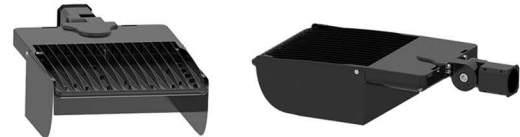
Step1: Align the light shield to the corresponding hole of the lamp body

Step2: Fix it with M8 screws



Step3: Hook the hook of the light shield to the lamp body

Step4: The installation is complete



APPLICATIONS

