



Report No.: GZE151161-C

NVLAP LAB CODE 201011-0

## LM-79-08 Test Report

For

**AOK LED LIGHT COMPANY LIMITED**

**(Brand Name: AOK)**

Building 1, St George's Science and Technology Industrial Park, Shajin Street, Shenzhen,  
Guangdong Province, China Zip 518104

### Outdoor Pole/Arm-mounted Area and Roadway Luminaires

Model name(s): AOK-75WiT

Representative (Tested) Model: AOK-75WiT(3000K)  
AOK-75WiT(5700K)

Model Different: All construction and rating are the same, except CCT

Test & Report By:

*Jack Luo*

Engineer: Jack Luo

Date: Jan.27,2016

Review By:

*Tommy Liang*

Manager: Tommy Liang

Note: This report does not imply product certification, approval, or endorsement by NVLAP, NIST, or any agency of the Federal Government.

Laboratory: Standard-Tech Co. Ltd Testing Center  
NVLAP CODE: 201011-0

Report Format Number STD/QR4909-A/2

Address: Standard-Tech Building, No.6 Guanhong Road, Guangzhou Science City, Guangzhou 510663, China

Tel: 8620-3229 0320 Fax: 8620-32290422 <http://www.standard-tech.com>

**Performance Assessment:**

Model name	CCT(K)	Total Luminous (lm)	Power (W)	Luminous Efficacy (lm/W)
AOK-75WiT(3000K)	3000	10081	75.46	133.59
AOK-75WiT(3500K)	3500	10230 <sup>*1</sup>	75.58 <sup>*2</sup>	135.36 <sup>*3</sup>
AOK-75WiT(4000K)	4000	10379 <sup>*1</sup>	75.58 <sup>*2</sup>	137.33 <sup>*3</sup>
AOK-75WiT(4500K)	4500	10529 <sup>*1</sup>	75.58 <sup>*2</sup>	139.30 <sup>*3</sup>
AOK-75WiT(5000K)	5000	10678 <sup>*1</sup>	75.58 <sup>*2</sup>	141.28 <sup>*3</sup>
AOK-75WiT(5700K)	5700	10827	75.70	143.03

\*1: This value is calculated and the calculation formula is as below:

$$10230 = (10827 - 10081) / 5 + 10081$$

$$10379 = (10827 - 10081) / 5 + 10230$$

$$10529 = (10827 - 10081) / 5 + 10379$$

$$10678 = (10827 - 10081) / 5 + 10529$$

\*2: This value is calculated and the calculation formula is as below:

$$75.58 = (75.70 + 75.46) / 2$$

\*3: This value is calculated and the calculation formula is as below:

$$135.36 = 10230 / 75.58$$

$$137.33 = 10379 / 75.58$$

$$139.30 = 10529 / 75.58$$

$$141.03 = 10678 / 75.58$$

U.S. Department of Energy

**Lighting Facts™ Uniform LM-79 Reporting Template**
**Laboratory Information:**

Name of Test Laboratory	Standard-Tech Co. Ltd
Date of Test Report	Jan.27,2015
Test Report No.	GZE151161-C
Laboratory Contact Name	Tommy Liang

**Product Information:**

Organization Name	AOK LED LIGHT COMPANY LIMITED		
Brand Name	AOK		
Model Number	AOK-75WiT(3000K)		
SKU (if available)	N/A		
Type of Luminaire (for integral lamps, list base type and lamp type)	Outdoor Pole/Arm-mounted Area and Roadway Luminaires		
Luminaire Aperture (for downlights)	--	in.	
Luminaire Length	--	mm	
Luminaires Width	--	mm	
Number of Units (modular products)	N/A	s	

**Integrating Sphere**
**Goniophotometer**
**Electrical Measurements:**
**Output**
**Output**

Input Wattage	--	75.46	W
Input Current	--	0.6348	A
Input Voltage (ac)	--	120.0	V
Power Factor	--	0.9906	
Off-State Power	--	0	W

**Photometric Characteristics**

Total Initial Lumen Output	--	10081	lm
Initial Lumen Efficacy	--	133.59	lm/w
Correlated color temperature / CCT	3083	--	K
Color rendering index / CRI	73.1	--	
R9 Value	0	--	
Duv	-0.0017	--	
<b>Luminous Intensity Distribution</b>			
Center beam candlepower (if applicable)	-----	2485	cd
Beam angle (if applicable)		114.1	°
Zonal lumens in the 0°-60° zone		79.5	%
Zonal lumens in the 60°-90° zone		20.4	%
Zonal lumens in the 90°-120° zone		0	%
Zonal lumens in the 120°-180° zone		0.2	%

Laboratory: Standard-Tech Co. Ltd Testing Center

NVLAP CODE: 201011-0

Report Format Number STD/QR4909-A/2

Address: Standard-Tech Building, No.6 Guanhong Road, Guangzhou Science City, Guangzhou 510663, China

 Tel: 8620-3229 0320 Fax: 8620-32290422 <http://www.standard-tech.com>

U.S. Department of Energy

**Lighting Facts™ Uniform LM-79 Reporting Template**
**Laboratory Information:**

Name of Test Laboratory	Standard-Tech Co. Ltd
Date of Test Report	Jan.27,2016
Test Report No.	GZE151161-C
Laboratory Contact Name	Tommy Liang

**Product Information:**

Organization Name	AOK LED LIGHT COMPANY LIMITED		
Brand Name	AOK		
Model Number	AOK-75WiT(5700K)		
SKU (if available)	N/A		
Type of Luminaire (for integral lamps, list base type and lamp type)	Outdoor Pole/Arm-mounted Area and Roadway Luminaires		
Luminaire Aperture (for downlights)	--	in.	
Luminaire Length	--	mm	
Luminaires Width	--	mm	
Number of Units (modular products)	N/A	s	

**Integrating Sphere**
**Goniophotometer**
**Electrical Measurements:**
**Output**
**Output**

Input Wattage	75.70	--	W
Input Current	0.6357	--	A
Input Voltage (ac)	120.0	--	V
Power Factor	0.9924	--	
Off-State Power	0	--	W

**Photometric Characteristics**

Total Initial Lumen Output	10827	--	lm
Initial Lumen Efficacy	143.03	--	lm/w
Correlated color temperature / CCT	5383	--	K
Color rendering index / CRI	76.3	--	
R9 Value	0	--	
Duv	-0.0017	--	
<b>Luminous Intensity Distribution</b>			
Center beam candlepower (if applicable)			cd
Beam angle (if applicable)			°
Zonal lumens in the 0°-60° zone			%
Zonal lumens in the 60°-90° zone	-----	-----	%
Zonal lumens in the 90°-120° zone			%
Zonal lumens in the 120°-180° zone			%

Laboratory: Standard-Tech Co. Ltd Testing Center

NVLAP CODE: 201011-0

Report Format Number STD/QR4909-A/2

Address: Standard-Tech Building, No.6 Guanhong Road, Guangzhou Science City, Guangzhou 510663, China

 Tel: 8620-3229 0320 Fax: 8620-32290422 <http://www.standard-tech.com>

Test Specifications:	
Date of Receipt	: Dec.14,2015
Date of Test	: Jan.25,2016
Test item	: Total Luminous Flux, Luminous Distribution Intensity, Luminous Efficacy, Correlated Color Temperature, Color Rendering Index, Chromaticity Coordinate, Electrical parameters
Reference Standard	IES LM-79-2008 Electrical and Photometric Measurements of Solid-State Lighting Products ANSI C78.377-2008 Specifications for the Chromaticity of Solid State Lighting Products CIE 13.3-1995 Method of Measuring and Specifying Colour Rendering Properties of Light Sources CIE 15-2004 Technical Report Colorimetry IESNA LM-16-93 Practical Guide to Colorimetry of Light Source IESNA TM-16-05 Technical Memorandum on Light Emitting Diode (LED) Sources and Systems
Reference Work Instruction	QD25

### Test Methods

#### 1. Photometric and Electrical measurements – Light Distribution Method:

Photometric parameters were measured using the goniophotometer and software. The ambient temperature shall be maintained at  $25^{\circ}\text{C} \pm 1^{\circ}\text{C}$ , measured at a point not more than 1 m from the sample and at the same height as the sample. The sample was operated at 120 Volts AC, 60Hz. It was stabilized before measurement was made. Luminous flux, luminaire efficacy, zonal lumen were calculated from the software taken at  $1^{\circ}$  vertical intervals and  $22.5^{\circ}$  horizontal intervals.

#### 2. Photometric and Electrical Measurements – Integrating Sphere Method:

Photometric parameters were measured using an integrating sphere, a spectroradiometer and software. The ambient temperature condition inside the sphere was maintained at  $25^{\circ}\text{C} \pm 1^{\circ}\text{C}$ . The sample measurements were made using a spectroradiometer connected by a fiber optic cable and detector through the detector port of the integrating sphere. The sample was operated at 120 Volts AC, 60Hz. It was stabilized before measurement was made. Chromaticity coordinates, correlated color temperature and color rendering index were calculated from the spectral radiant flux measurements taken at least 5 nm intervals over the range of 380 to 780 nm.

**1. Product Information:**

Brand Name	AOK
Model Number	AOK-75WiT
Luminaire Type	Outdoor Pole/Arm-mounted Area and Roadway Luminaires
Rated Voltage / Frequency	100~ 240/277Vac, 50/60Hz
Nominal Power	75W
Rated Initial Lamp Lumen	--
Declared CCT	3000K,3500K,4000K,4500K,5000K,5700K
LED Manufacturer	Philips Lumileds
LED Model	LUXEON 3030 2D
Sample Receipt Date	Dec.14,2015
Sample Number	GZE151161-C1(3000K),C2(5700K)

**Photo**



<b>2.1 Electrical, Photometric and Chromaticity Measurements</b> <i>(Refer to Work Instruction QD25)</i>	<b>IES LM-79 2008</b>
---	-----------------------

<b>Test date</b>	2016-01-25	<b>Test Ambient:</b>	25.2 °C
<b>Test Orientation</b>	As intended	<b>Stabilization Time (min)</b>	90
<b>Model Number</b>	AOK-75WiT(3000K)		

**Electrical Measurement:**

Sample No.	Voltage (Vac)	Frequency (Hz)	Current (A)	Power (W)	Power Factor	THD %
GZE151161	120.0	60	0.6348	75.46	0.9906	6.73
-C1	277.0	60	0.2910	74.74	0.9272	12.55

**Sphere-Spectroradiometer Method:**

Parameter	Result	Special Color Rendering Indices			
Test Voltage (V)	120.0	R1	70	R9	0
Frequency (Hz)	60	R2	84	R10	61
Color Rendering Index (CRI)	73.1	R3	94	R11	61
R9	0	R4	67	R12	49
CCT (K)	3083	R5	69	R13	73
Chromaticity (x, y)	x=0.4288 y=0.3971	R6	76	R14	97
Chromaticity (u', v')	u'=0.2483 v'=0.5174	R7	79	R15	64
Duv	-0.0017	R8	47	--	--

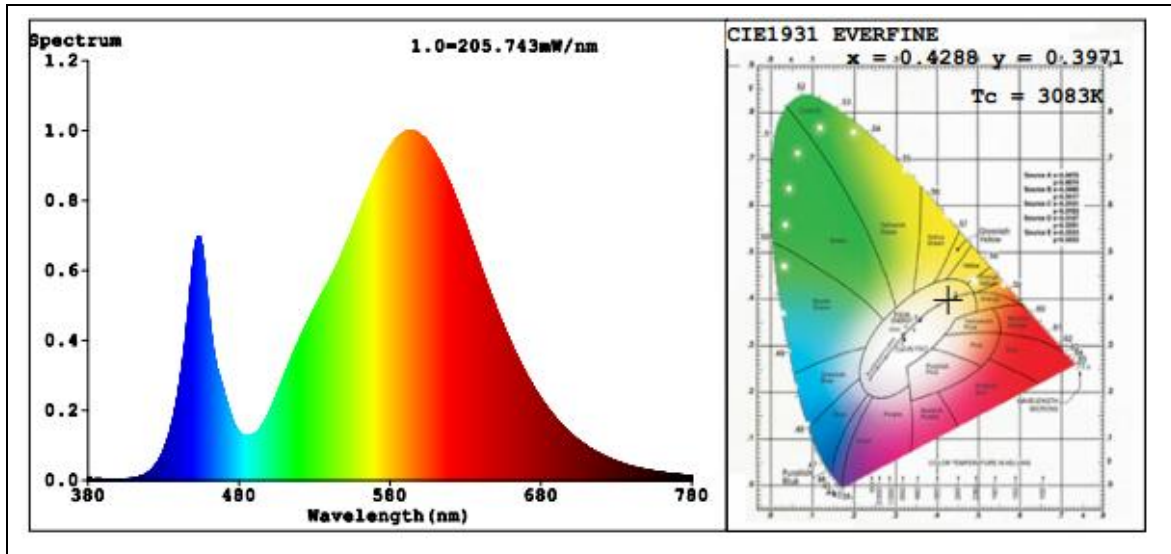
**Goniophotometer Method:**

Parameter	Result
Test Voltage (V)	120.1
Frequency (Hz)	60
Total Luminous (lm)	10081
Luminous Efficacy (lm/W)	133.59
Beam Angle°	114.1
Center Beam Candle Power (cd)	2485

**Goniophotometer Method:**

Parameter	Result
Test Voltage (V)	277.0
Frequency (Hz)	60
Total Luminous (lm)	10010
Luminous Efficacy (lm/W)	133.93

**Spectral Power Distribution & Chromaticity Diagram**



Laboratory: Standard-Tech Co. Ltd Testing Center  
NVLAP CODE: 201011-0

Report Format Number STD/QR4909-A/2

Address: Standard-Tech Building, No.6 Guanhong Road, Guangzhou Science City, Guangzhou 510663, China

Tel: 8620-3229 0320 Fax: 8620-32290422 <http://www.standard-tech.com>



**Zonal Lumen Tabulation**

Zonal Lumen Summary		
Zone	Lumens	% Luminaire
0-30	2,117.2	21%
0-40	3,743.2	37.1%
0-60	8,011.8	79.5%
60-90	2,052.5	20.4%
70-100	463.3	4.6%
90-120	4.6	0%
0-90	10,064.4	99.8%
90-180	16.4	0.2%
0-180	10,080.8	100%

Lumens Per Zone					
Zone	Lumens	% Total	Zone	Lumens	% Total
0-10	236.1	2.3%	90-100	0.2	0%
10-20	701.3	7.0%	100-110	1.5	0%
20-30	1,179.8	11.7%	110-120	2.9	0%
30-40	1,626.0	16.1%	120-130	3.5	0%
40-50	2,023.3	20.1%	130-140	3.0	0%
50-60	2,245.4	22.3%	140-150	2.3	0%
60-70	1,589.5	15.8%	150-160	1.6	0%
70-80	411.3	4.1%	160-170	1.0	0%
80-90	51.8	0.5%	170-180	0.4	0%

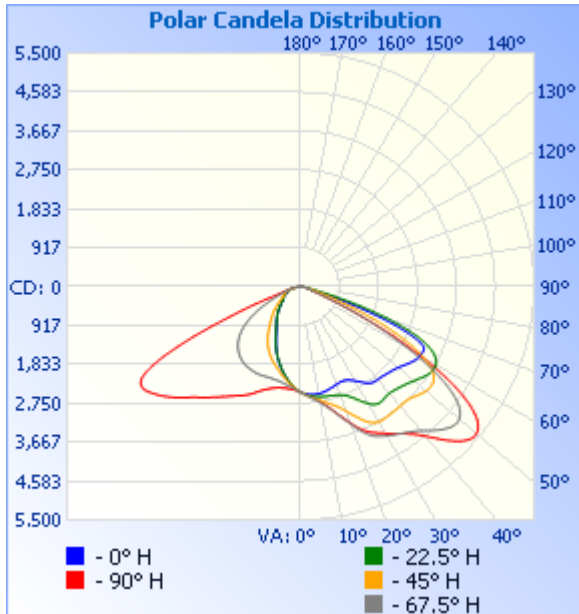
Laboratory: Standard-Tech Co. Ltd Testing Center  
 NVLAP CODE: 201011-0

Report Format Number STD/QR4909-A/2

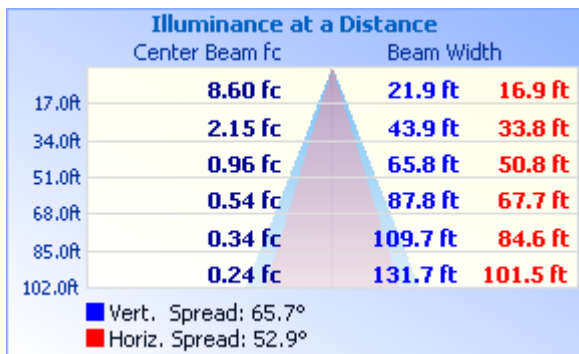
Address: Standard-Tech Building, No.6 Guanhong Road, Guangzhou Science City, Guangzhou 510663, China

Tel: 8620-3229 0320 Fax: 8620-32290422 <http://www.standard-tech.com>

### Photometric Data



### Illuminance Plots



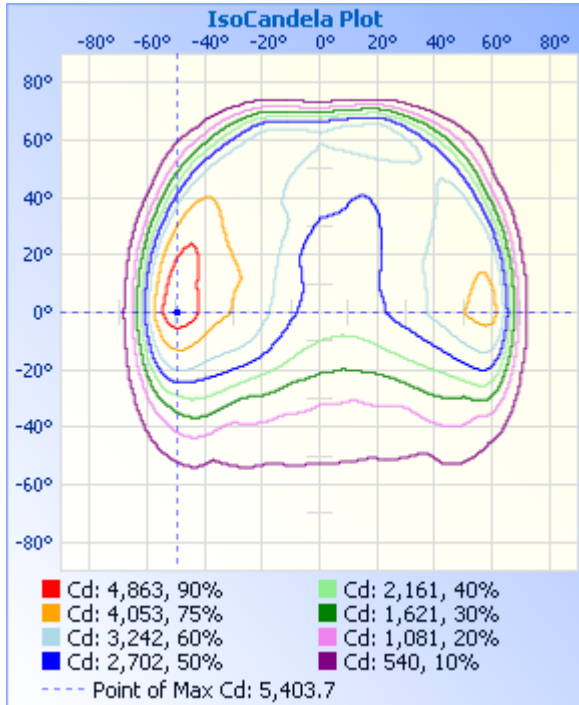
Laboratory: Standard-Tech Co. Ltd Testing Center  
NVLAP CODE: 201011-0

Report Format Number STD/QR4909-A/2

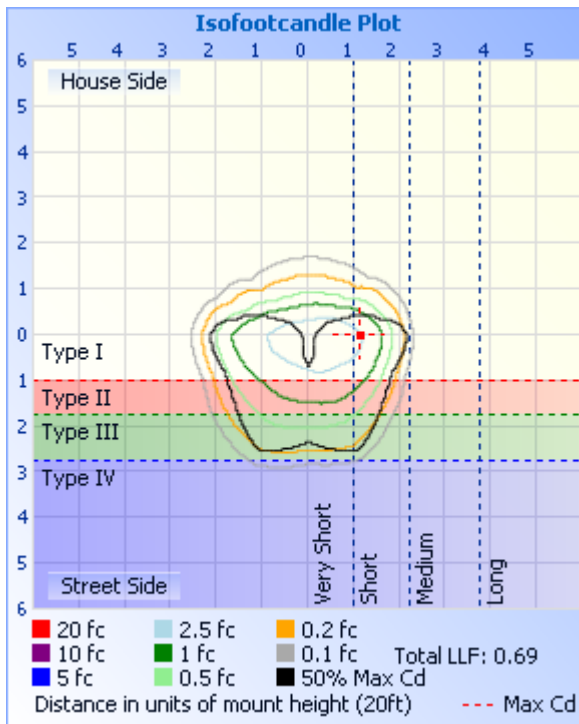
Address: Standard-Tech Building, No.6 Guanhong Road, Guangzhou Science City, Guangzhou 510663, China

Tel: 8620-3229 0320 Fax: 8620-32290422 <http://www.standard-tech.com>

### ISOCANDELA DIAGRAM



### ISOLUX DIAGRAM



Laboratory: Standard-Tech Co. Ltd Testing Center  
 NVLAP CODE: 201011-0

Report Format Number STD/QR4909-A/2

Address: Standard-Tech Building, No.6 Guanhong Road, Guangzhou Science City, Guangzhou 510663, China

Tel: 8620-3229 0320 Fax: 8620-32290422 <http://www.standard-tech.com>

**Candela Table - Type C**

	0	22.5	45	67.5	90	112.5	135	157.5	180	202.5	225	247.5	270	292.5	315	337.5	360
0	2485	2485	2485	2485	2485	2485	2485	2485	2485	2485	2485	2485	2485	2485	2485	2485	2485
1	2505	2510	2513	2510	2503	2494	2483	2471	2463	2458	2457	2462	2469	2478	2487	2497	2505
2	2522	2532	2538	2535	2522	2504	2481	2454	2436	2428	2428	2440	2453	2471	2488	2507	2522
3	2535	2552	2562	2561	2543	2514	2477	2435	2407	2395	2398	2420	2442	2468	2489	2515	2535
4	2546	2569	2586	2588	2566	2526	2473	2413	2374	2360	2368	2400	2431	2467	2491	2521	2546
5	2554	2585	2608	2615	2591	2540	2467	2389	2338	2322	2338	2382	2425	2468	2492	2525	2554
6	2559	2599	2631	2645	2618	2555	2461	2362	2299	2283	2308	2367	2421	2469	2494	2527	2559
7	2561	2611	2654	2676	2647	2573	2455	2334	2259	2243	2278	2352	2420	2472	2494	2527	2561
8	2562	2621	2677	2710	2681	2592	2448	2305	2217	2202	2247	2338	2419	2476	2495	2525	2562
9	2559	2628	2701	2746	2720	2613	2442	2276	2174	2160	2215	2324	2420	2479	2495	2521	2559
10	2556	2636	2727	2786	2760	2633	2435	2245	2130	2119	2182	2310	2422	2485	2495	2516	2556
11	2551	2643	2753	2829	2805	2658	2429	2214	2084	2075	2151	2298	2427	2490	2495	2509	2551
12	2544	2648	2781	2877	2855	2685	2422	2182	2037	2031	2120	2289	2434	2498	2495	2502	2544
13	2534	2653	2811	2931	2911	2715	2415	2150	1990	1985	2089	2282	2444	2508	2495	2492	2534
14	2524	2658	2842	2989	2971	2749	2408	2116	1942	1937	2058	2277	2458	2521	2494	2482	2524
15	2513	2663	2876	3052	3037	2785	2402	2082	1896	1890	2028	2273	2474	2534	2494	2471	2513
16	2502	2670	2913	3127	3107	2823	2395	2048	1849	1843	1997	2270	2492	2551	2495	2458	2502
17	2490	2678	2955	3202	3180	2862	2390	2012	1801	1796	1968	2268	2513	2567	2495	2445	2490
18	2478	2687	3002	3277	3257	2904	2384	1974	1752	1749	1939	2268	2536	2584	2497	2432	2478
19	2466	2699	3055	3357	3337	2945	2378	1935	1702	1701	1912	2268	2562	2605	2500	2419	2466
20	2454	2715	3121	3444	3419	2984	2369	1893	1648	1652	1883	2269	2593	2627	2505	2406	2454
21	2443	2735	3187	3531	3498	3026	2357	1846	1592	1600	1855	2271	2626	2658	2510	2393	2443
22	2435	2761	3254	3620	3576	3066	2342	1798	1535	1547	1826	2275	2665	2695	2518	2380	2435
23	2432	2794	3321	3710	3649	3102	2324	1749	1479	1493	1795	2279	2706	2738	2527	2369	2432
24	2433	2834	3394	3790	3715	3131	2301	1699	1423	1440	1763	2283	2749	2783	2541	2361	2433
25	2440	2882	3469	3856	3772	3157	2275	1646	1368	1389	1730	2286	2791	2829	2559	2358	2440
26	2451	2938	3534	3914	3821	3175	2243	1595	1315	1337	1696	2288	2830	2872	2580	2360	2451
27	2470	2998	3589	3957	3864	3185	2207	1540	1265	1287	1660	2288	2867	2912	2604	2368	2470
28	2494	3062	3633	3992	3906	3186	2166	1488	1219	1239	1623	2287	2902	2947	2631	2383	2494

Laboratory: Standard-Tech Co. Ltd Testing Center  
 NVLAP CODE: 201011-0

Report Format Number STD/QR4909-A/2

Address: Standard-Tech Building, No.6 Guanhong Road, Guangzhou Science City, Guangzhou 510663, China

Tel: 8620-3229 0320 Fax: 8620-32290422 <http://www.standard-tech.com>

29	2524	3120	3662	4024	3947	3188	2123	1434	1176	1194	1584	2285	2935	2976	2658	2404	2524
30	2559	3178	3678	4055	3991	3185	2075	1384	1137	1152	1543	2283	2967	3002	2683	2430	2559
31	2600	3235	3683	4087	4036	3179	2024	1335	1102	1113	1502	2279	3001	3025	2705	2459	2600
32	2644	3272	3683	4120	4082	3174	1970	1289	1070	1077	1459	2275	3038	3048	2723	2491	2644
33	2691	3297	3683	4150	4128	3160	1915	1244	1039	1043	1415	2271	3076	3072	2737	2524	2691
34	2736	3308	3679	4181	4176	3145	1859	1202	1011	1012	1372	2264	3118	3095	2747	2557	2736
35	2775	3308	3676	4212	4229	3131	1801	1161	984	983	1327	2258	3160	3118	2753	2586	2775
36	2805	3301	3673	4246	4287	3111	1742	1123	957	955	1284	2251	3207	3147	2754	2608	2805
37	2825	3290	3669	4284	4349	3089	1682	1087	929	928	1241	2240	3256	3179	2758	2623	2825
38	2836	3278	3666	4325	4421	3064	1622	1051	901	902	1199	2226	3307	3213	2762	2631	2836
39	2840	3272	3664	4374	4505	3040	1561	1015	873	877	1157	2211	3355	3244	2768	2637	2840
40	2844	3272	3661	4428	4601	3015	1501	979	846	851	1117	2194	3405	3276	2777	2644	2844
41	2848	3278	3661	4493	4704	2990	1441	946	818	826	1078	2176	3457	3307	2788	2654	2848
42	2854	3290	3662	4562	4818	2964	1382	911	790	800	1041	2157	3510	3335	2802	2669	2854
43	2865	3303	3667	4629	4932	2935	1324	876	761	771	1005	2134	3564	3363	2815	2688	2865
44	2878	3319	3678	4693	5042	2903	1268	840	732	744	969	2110	3623	3389	2829	2712	2878
45	2892	3337	3696	4750	5144	2867	1211	804	704	716	934	2083	3687	3417	2843	2739	2892
46	2905	3355	3725	4803	5238	2828	1156	769	676	689	900	2053	3756	3448	2856	2768	2905
47	2917	3378	3757	4847	5315	2785	1103	734	650	661	867	2020	3827	3481	2867	2799	2917
48	2932	3402	3787	4875	5372	2734	1051	700	625	635	833	1986	3900	3512	2882	2830	2932
49	2952	3432	3815	4886	5404	2675	1000	667	602	610	799	1947	3973	3540	2901	2865	2952
50	2975	3462	3839	4874	5404	2610	949	638	580	586	766	1905	4044	3562	2923	2903	2975
51	3003	3494	3857	4835	5373	2537	900	610	560	565	732	1858	4111	3583	2948	2947	3003
52	3036	3526	3864	4767	5309	2455	852	585	541	546	698	1807	4174	3598	2974	2997	3036
53	3068	3565	3864	4671	5211	2363	805	563	526	529	666	1751	4230	3610	3003	3050	3068
54	3101	3601	3854	4536	5064	2261	759	543	512	513	635	1690	4285	3614	3032	3112	3101
55	3134	3633	3830	4367	4876	2149	716	526	500	499	606	1625	4338	3614	3064	3173	3134
56	3167	3658	3785	4157	4640	2026	675	512	489	488	576	1555	4385	3610	3096	3235	3167
57	3201	3679	3720	3914	4362	1898	636	500	480	478	550	1482	4416	3591	3121	3297	3201
58	3223	3692	3630	3629	4041	1761	600	489	470	470	525	1406	4426	3558	3144	3362	3223
59	3240	3693	3511	3318	3685	1618	568	479	459	461	504	1324	4400	3499	3166	3423	3240

Laboratory: Standard-Tech Co. Ltd Testing Center  
 NVLAP CODE: 201011-0

Report Format Number STD/QR4909-A/2

Address: Standard-Tech Building, No.6 Guanhong Road, Guangzhou Science City, Guangzhou 510663, China

Tel: 8620-3229 0320 Fax: 8620-32290422 <http://www.standard-tech.com>

60	3249	3682	3365	2982	3276	1474	540	470	448	452	486	1240	4325	3406	3188	3480	3249
61	3262	3653	3183	2624	2867	1324	514	461	436	443	469	1152	4182	3266	3184	3534	3262
62	3267	3607	2978	2268	2457	1179	493	452	422	434	454	1060	3950	3078	3159	3578	3267
63	3261	3541	2742	1910	2016	1041	473	444	402	424	440	969	3633	2830	3104	3611	3261
64	3225	3445	2478	1599	1618	914	456	434	376	413	427	879	3231	2529	3013	3625	3225
65	3111	3320	2194	1290	1261	799	440	424	370	402	415	793	2771	2183	2877	3603	3111
66	2917	3163	1906	980	971	700	426	412	368	390	403	711	2284	1820	2694	3537	2917
67	2665	2967	1614	746	749	616	413	400	366	375	392	638	1811	1494	2461	3428	2665
68	2365	2733	1355	563	578	545	401	385	365	357	380	572	1474	1168	2189	3263	2365
69	2017	2462	1095	433	456	487	387	369	361	337	367	514	1141	843	1887	3032	2017
70	1645	2150	874	347	374	441	372	350	356	317	353	465	808	630	1592	2711	1645
71	1283	1809	691	291	318	403	356	331	347	301	337	424	625	480	1297	2311	1283
72	921	1486	547	261	281	371	338	312	331	286	319	389	509	398	1002	1874	921
73	620	1163	434	242	256	343	315	292	315	271	298	359	431	358	766	1480	620
74	379	840	351	225	235	317	287	273	297	256	274	333	377	337	579	1088	379
75	253	587	287	210	217	292	253	259	275	245	246	309	337	316	422	695	253
76	195	421	234	192	201	268	219	243	252	233	219	284	302	287	301	468	195
77	171	311	193	171	185	243	185	225	228	215	187	257	271	249	229	333	171
78	156	242	159	149	167	217	153	205	202	192	155	228	238	212	187	262	156
79	142	200	132	130	149	189	128	181	175	168	126	192	205	175	158	239	142
80	128	167	108	112	129	157	108	155	149	144	104	157	172	141	130	226	128
81	114	140	87	97	110	130	91	129	123	121	85	126	141	110	105	208	114
82	91	109	67	83	93	103	76	103	98	98	70	94	112	82	80	182	91
83	63	77	50	69	77	70	61	77	74	74	56	64	87	62	57	143	63
84	40	51	35	55	62	51	47	55	49	51	41	47	66	48	37	99	40
85	22	29	24	42	47	40	32	32	25	29	28	36	47	35	23	59	22
86	7	13	14	29	34	30	19	11	7	10	16	26	31	23	12	24	7
87	1	2	5	17	20	20	9	2	2	3	7	16	15	12	3	2	1
88	0	1	0	6	5	6	3	1	1	2	2	2	1	2	0	1	0
89	0	0	0	0	0	0	0	0	0	0	0	0	0	0	0	0	0
90	0	0	0	0	0	0	0	0	0	0	0	0	0	0	0	0	0

Laboratory: Standard-Tech Co. Ltd Testing Center  
 NVLAP CODE: 201011-0

Report Format Number STD/QR4909-A/2

Address: Standard-Tech Building, No.6 Guanhong Road, Guangzhou Science City, Guangzhou 510663, China

Tel: 8620-3229 0320 Fax: 8620-32290422 <http://www.standard-tech.com>

91	0	0	0	0	0	0	0	0	0	0	0	0	0	0	0	0
92	0	0	0	0	0	0	0	0	0	0	0	0	0	0	0	0
93	0	0	0	0	0	0	0	0	0	0	0	0	0	0	0	0
94	0	0	0	0	0	0	1	0	0	0	0	0	0	0	0	0
95	0	0	0	0	0	0	1	0	1	0	0	0	0	0	0	0
96	0	0	0	0	0	0	1	0	1	0	0	0	0	0	0	0
97	0	0	0	0	0	1	1	1	1	0	0	0	0	0	0	0
98	0	0	0	0	1	0	1	2	1	1	0	0	0	0	0	0
99	0	0	0	0	1	0	1	2	1	2	1	0	0	0	0	0
100	0	0	0	0	1	1	2	2	2	2	1	0	0	0	0	0
101	0	0	0	0	1	1	2	2	2	2	1	0	0	0	0	0
102	0	0	0	0	2	1	2	3	2	3	1	0	1	0	0	0
103	0	0	0	0	2	2	2	3	2	3	2	0	1	0	0	0
104	0	0	0	0	3	2	3	3	3	3	2	0	1	0	0	0
105	0	0	0	0	3	2	3	3	3	3	2	1	2	0	0	0
106	0	0	0	0	3	3	3	3	3	3	3	1	2	1	0	0
107	0	0	0	1	4	3	3	3	3	3	3	2	3	1	0	0
108	0	0	0	1	4	3	3	3	4	4	3	2	3	1	0	0
109	0	0	0	1	4	3	3	3	4	3	3	3	4	1	0	0
110	0	0	0	1	5	4	3	3	4	4	3	3	4	1	0	0
111	0	0	0	1	5	4	3	3	4	4	4	3	5	2	0	0
112	0	0	0	2	5	4	4	3	4	4	4	4	5	2	0	0
113	0	0	0	2	5	4	4	4	4	4	4	4	5	2	0	0
114	0	0	0	2	5	5	4	4	4	5	4	4	6	2	0	0
115	0	0	0	2	5	5	4	4	5	5	4	4	6	3	0	0
116	0	0	0	2	5	5	4	4	5	5	5	5	6	3	0	0
117	0	0	0	2	5	5	5	4	5	5	5	5	6	3	0	0
118	0	0	0	3	5	5	5	4	5	5	5	5	7	3	0	0
119	0	0	0	3	6	5	5	5	5	5	5	5	7	3	0	0
120	0	0	0	3	6	5	5	5	5	6	5	5	7	4	0	0
121	0	0	0	3	6	5	5	5	5	6	5	5	8	4	1	0

Laboratory: Standard-Tech Co. Ltd Testing Center  
 NVLAP CODE: 201011-0

Report Format Number STD/QR4909-A/2

Address: Standard-Tech Building, No.6 Guanhong Road, Guangzhou Science City, Guangzhou 510663, China

Tel: 8620-3229 0320 Fax: 8620-32290422 <http://www.standard-tech.com>

122	0	0	0	3	6	6	5	5	6	6	5	6	8	4	1	0	0
123	0	0	0	3	6	6	4	5	6	6	5	6	8	4	1	0	0
124	0	0	1	3	6	6	4	5	6	6	5	6	8	5	1	0	0
125	0	0	1	4	6	6	4	5	5	6	5	6	8	5	1	0	0
126	0	0	1	4	6	6	4	5	5	6	5	7	9	5	1	0	0
127	0	0	1	4	6	6	4	5	5	6	6	7	9	5	1	1	0
128	0	0	1	4	6	5	4	5	5	6	6	6	9	5	1	0	0
129	0	0	1	4	6	5	4	5	5	6	6	6	9	5	1	1	0
130	0	0	1	4	6	5	4	4	5	6	6	6	9	5	1	1	0
131	0	1	1	4	6	5	4	4	5	6	6	6	9	5	1	1	0
132	1	1	1	4	6	5	4	4	5	6	6	6	9	5	1	1	1
133	0	1	1	4	6	5	4	4	5	6	6	6	9	5	1	1	0
134	0	1	1	4	5	5	4	4	5	5	6	6	9	5	1	1	0
135	1	1	1	4	5	4	4	4	4	5	5	6	9	5	1	1	1
136	1	1	1	4	5	5	4	4	4	5	5	6	8	5	2	1	1
137	1	1	1	3	5	5	3	4	4	5	5	6	8	5	2	1	1
138	1	1	1	3	5	5	3	4	4	5	5	6	8	5	2	1	1
139	1	1	1	3	5	5	3	4	4	5	5	6	8	5	2	1	1
140	1	1	1	3	5	5	3	4	4	5	5	6	8	5	2	1	1
141	1	1	1	3	5	4	3	4	4	5	5	6	8	5	2	1	1
142	1	1	1	3	5	4	3	4	4	5	5	6	8	5	2	1	1
143	1	1	1	3	5	4	3	4	4	5	5	6	7	4	2	1	1
144	1	1	1	3	5	4	3	4	4	5	5	6	7	4	2	2	1
145	1	1	1	3	5	4	3	4	4	5	5	6	7	4	2	2	1
146	1	2	1	3	4	4	4	4	4	5	5	6	7	4	2	2	1
147	2	2	2	3	4	4	4	4	4	5	5	6	7	4	2	2	2
148	2	2	2	3	4	4	4	4	4	5	5	6	7	4	3	2	2
149	2	2	2	3	4	4	4	4	4	5	6	6	6	4	3	2	2
150	2	2	2	3	4	4	4	4	4	4	6	5	6	4	3	2	2
151	2	2	2	3	4	4	4	4	4	4	6	5	6	4	3	2	2
152	2	2	2	3	4	4	4	4	4	4	5	5	6	4	3	2	2

Laboratory: Standard-Tech Co. Ltd Testing Center  
 NVLAP CODE: 201011-0

Report Format Number STD/QR4909-A/2

Address: Standard-Tech Building, No.6 Guanhong Road, Guangzhou Science City, Guangzhou 510663, China

Tel: 8620-3229 0320 Fax: 8620-32290422 <http://www.standard-tech.com>



153	2	2	2	3	4	4	4	4	4	4	5	5	5	4	3	3	2
154	2	2	2	3	4	4	4	3	4	4	5	5	5	4	3	3	2
155	2	2	3	3	3	4	4	3	3	4	5	5	4	4	4	3	2
156	3	2	3	3	3	3	4	3	3	4	5	4	4	4	4	3	3
157	3	2	3	3	3	3	4	3	3	3	5	4	4	4	4	3	3
158	3	2	3	3	3	3	4	3	3	4	4	4	4	4	4	3	3
159	3	3	3	3	3	3	3	3	3	3	4	4	4	4	4	3	3
160	3	3	3	3	3	3	3	3	3	3	4	4	4	4	4	3	3
161	3	3	3	3	3	3	3	4	3	3	4	4	4	4	4	3	3
162	3	3	3	3	3	3	3	4	3	3	4	4	4	4	4	3	3
163	6	3	3	3	3	3	3	4	3	3	4	4	4	4	4	3	6
164	4	3	3	3	3	3	3	4	3	3	4	4	4	3	4	3	4
165	4	3	3	3	3	3	3	4	3	3	4	4	4	3	4	3	4
166	3	3	3	3	4	3	3	4	3	4	4	4	4	3	4	3	3
167	3	3	3	3	4	4	4	4	4	4	4	5	4	3	4	3	3
168	4	4	4	3	4	4	4	4	4	4	4	5	4	3	4	3	4
169	4	4	4	3	4	4	4	4	4	5	5	5	4	4	4	4	4
170	4	4	4	3	4	4	4	5	5	5	5	5	4	4	4	4	4
171	4	4	4	3	4	4	4	5	5	5	5	5	4	4	5	4	4
172	4	4	4	3	4	4	4	5	5	5	5	5	4	4	5	4	4
173	4	4	4	3	4	4	4	5	5	5	5	5	4	4	5	4	4
174	4	4	4	3	4	4	4	5	5	5	5	5	4	4	5	4	4
175	5	4	4	3	4	4	4	5	4	5	5	5	4	4	5	4	5
176	5	4	5	3	4	4	4	5	4	5	5	5	4	4	5	4	5
177	5	4	5	4	4	4	4	4	4	5	5	5	4	4	5	4	5
178	5	4	5	4	4	4	4	4	4	5	5	5	4	4	5	4	5
179	5	4	5	4	4	4	4	4	4	5	4	5	4	4	4	4	5
180	5	5	5	5	5	5	5	5	5	5	5	5	5	5	5	5	5

Laboratory: Standard-Tech Co. Ltd Testing Center  
 NVLAP CODE: 201011-0

Report Format Number STD/QR4909-A/2

Address: Standard-Tech Building, No.6 Guanhong Road, Guangzhou Science City, Guangzhou 510663, China

Tel: 8620-3229 0320 Fax: 8620-32290422 <http://www.standard-tech.com>

<b>2.2 Electrical, Photometric and Chromaticity Measurements</b> <i>(Refer to Work Instruction QD25)</i>	<b>IES LM-79 2008</b>
---	-----------------------

<b>Test date</b>	2016-01-25	<b>Test Ambient:</b>	25.2 °C
<b>Test Orientation</b>	As intended	<b>Stabilization Time (min)</b>	90
<b>Model Number</b>	AOK-75WiT(5700K)		

**Electrical Measurement:**

Sample No.	Voltage (Vac)	Frequency (Hz)	Current (A)	Power (W)	Power Factor	THD %
GZE151161	120.0	60	0.6357	75.70	0.9924	5.69
-C2	277.0	60	0.2905	74.15	0.9216	12.82

**Sphere-Spectroradiometer Method:**

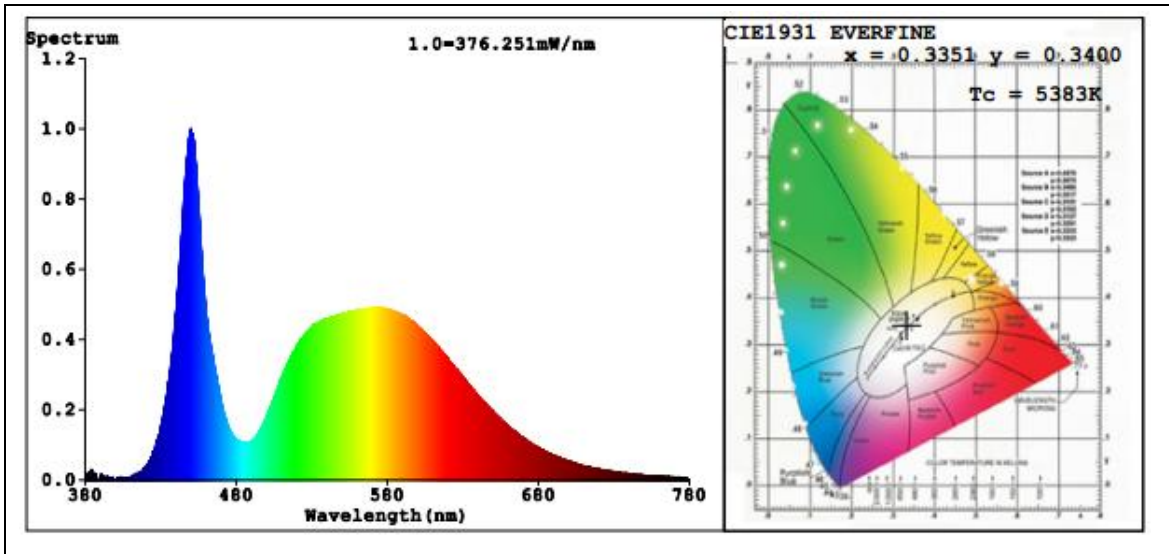
Parameter	Result
Test Voltage (V)	120.0
Frequency (Hz)	60
Color Rendering Index (CRI)	76.3
R9	0
CCT (K)	5383
Chromaticity (x, y)	x=0.3351 y=0.3400
Chromaticity (u', v')	u'=0.2091 v'=0.4774
Duv	-0.0017
Total Luminous (lm)	10827
Luminous Efficacy (lm/W)	143.03

Special Color Rendering Indices			
R1	75	R9	0
R2	81	R10	52
R3	82	R11	75
R4	77	R12	46
R5	76	R13	76
R6	72	R14	90
R7	83	R15	72
R8	64	--	--

**Sphere-Spectroradiometer Method:**

Parameter	Result
Test Voltage (V)	277.0
Frequency (Hz)	60
Total Initial Lumen Output(lm)	10654
Initial Lumen Efficacy(lm/w)	143.68

**Spectral Power Distribution & Chromaticity Diagram**



Laboratory: Standard-Tech Co. Ltd Testing Center  
NVLAP CODE: 201011-0

Report Format Number STD/QR4909-A/2

Address: Standard-Tech Building, No.6 Guanhong Road, Guangzhou Science City, Guangzhou 510663, China

Tel: 8620-3229 0320 Fax: 8620-32290422 <http://www.standard-tech.com>

**3. Test Equipment**

Equipment ID	Equipment Name	Last Calibration Date	Next Calibration Date
ST-R-336	2 meter Integrating Sphere	2015-07-01	2016-06-30
ST-R-331	Spectral analysis system HAAS-2000	2015-07-01	2016-06-30
D204	Standard Lamp	2015-07-01	2016-06-30
PF2010	Power Meter for Integrating Sphere	2015-07-01	2016-06-30
EE-09	Goniophotometer system	2015-07-01	2016-06-30
D908S	Standard Lamp	2015-07-01	2016-06-30
PF210	Power Meter for Goniophotometer	2015-07-01	2016-06-30
ST-R-181A	Temperature Tester	2015-07-01	2016-06-30
Uncertainty Photometric Measurement (Sphere):1.74% Chromaticity Measurement(Sphere):14.3K Photometric Measurement(Goniophotometer):1.62%			

**\*\*\*\*\* END OF DATASHEET PACKAGE \*\*\*\*\***