



Report No.: GZE151161-B

NVLAP LAB CODE 201011-0

LM-79-08 Test Report

For

AOK LED LIGHT COMPANY LIMITED

(Brand Name: AOK)

Building 1, St George's Science and Technology Industrial Park, Shajin Street, Shenzhen,
Guangdong Province, China Zip 518104

Outdoor Pole/Arm-mounted Area and Roadway Luminaires

Model name(s): AOK-180WiT

Representative (Tested) Model: AOK-180WiT(3000K)
AOK-180WiT(5700K)

Model Different: All construction and rating are the same, except CCT

Test & Report By:

Jack Luo

Engineer: Jack Luo

Date: Dec.30,2015

Review By:

Tommy Liang

Manager: Tommy Liang

Note: This report does not imply product certification, approval, or endorsement by NVLAP, NIST, or any agency of the Federal Government.

Laboratory: Standard-Tech Co. Ltd Testing Center
NVLAP CODE: 201011-0

Report Format Number STD/QR4909-A/2

Address: Standard-Tech Building, No.6 Guanhong Road, Guangzhou Science City, Guangzhou 510663, China

Tel: 8620-3229 0320 Fax: 8620-32290422 <http://www.standard-tech.com>

Performance Assessment:

| Model name | CCT(K) | Total Luminous (lm) | Power (W) | Luminous Efficacy (lm/W) |
|-------------------|--------|---------------------|---------------------|--------------------------|
| AOK-180WiT(3000K) | 3000 | 23854 | 180.1 | 132.45 |
| AOK-180WiT(3500K) | 3500 | 24254 ^{*1} | 182.3 ^{*2} | 133.08 ^{*3} |
| AOK-180WiT(4000K) | 4000 | 24654 ^{*1} | 182.3 ^{*2} | 135.28 ^{*3} |
| AOK-180WiT(4500K) | 4500 | 25054 ^{*1} | 182.3 ^{*2} | 137.47 ^{*3} |
| AOK-180WiT(5000K) | 5000 | 25454 ^{*1} | 182.3 ^{*2} | 139.67 ^{*3} |
| AOK-180WiT(5700K) | 5700 | 25854 | 184.4 | 140.21 |

*1: This value is calculated and the calculation formula is as below:

$$24254 = (25854 - 23854) / 5 + 23854$$

$$24654 = (25854 - 23854) / 5 + 24254$$

$$25054 = (25854 - 23854) / 5 + 24654$$

$$25454 = (25854 - 23854) / 5 + 25054$$

*2: This value is calculated and the calculation formula is as below:

$$182.3 = (184.4 + 180.1) / 2$$

*3: This value is calculated and the calculation formula is as below:

$$133.08 = 24254 / 182.3$$

$$135.28 = 24656 / 182.3$$

$$137.47 = 25054 / 182.3$$

$$139.67 = 25454 / 182.3$$

U.S. Department of Energy

Lighting Facts™ Uniform LM-79 Reporting Template
Laboratory Information:

| | |
|-------------------------|-----------------------|
| Name of Test Laboratory | Standard-Tech Co. Ltd |
| Date of Test Report | Dec.30,2015 |
| Test Report No. | GZE151161-B |
| Laboratory Contact Name | Tommy Liang |

Product Information:

| | | | |
|---|---|-----|--|
| Organization Name | AOK LED LIGHT COMPANY LIMITED | | |
| Brand Name | AOK | | |
| Model Number | AOK-180WiT(3000K) | | |
| SKU (if available) | N/A | | |
| Type of Luminaire (for integral lamps, list base type and lamp type) | Outdoor Pole/Arm-mounted Area and Roadway Luminaires | | |
| Luminaire Aperture (for downlights) | -- | in. | |
| Luminaire Length | -- | mm | |
| Luminaires Width | -- | mm | |
| Number of Units (modular products) | N/A | s | |

Integrating Sphere
Goniophotometer
Electrical Measurements:
Output
Output

| | | | |
|--------------------|----|--------|---|
| Input Wattage | -- | 180.1 | W |
| Input Current | -- | 1.508 | A |
| Input Voltage (ac) | -- | 120.0 | V |
| Power Factor | -- | 0.9950 | |
| Off-State Power | -- | 0 | W |

Photometric Characteristics

| | | | |
|---|---------|--------|------|
| Total Initial Lumen Output | -- | 23854 | lm |
| Initial Lumen Efficacy | -- | 132.45 | lm/w |
| Correlated color temperature / CCT | 3036 | -- | K |
| Color rendering index / CRI | 72.4 | -- | |
| R9 Value | 0 | -- | |
| Duv | -0.0012 | -- | |
| Luminous Intensity Distribution | | | |
| Center beam candlepower (if applicable) | | 6495 | cd |
| Beam angle (if applicable) | | 94.3 | ° |
| Zonal lumens in the 0°-60° zone | ----- | 90 | % |
| Zonal lumens in the 60°-90° zone | | 9.9 | % |
| Zonal lumens in the 90°-120° zone | | 0 | % |
| Zonal lumens in the 120°-180° zone | | 0.2 | % |

Laboratory: Standard-Tech Co. Ltd Testing Center

NVLAP CODE: 201011-0

Report Format Number STD/QR4909-A/2

Address: Standard-Tech Building, No.6 Guanhong Road, Guangzhou Science City, Guangzhou 510663, China

 Tel: 8620-3229 0320 Fax: 8620-32290422 <http://www.standard-tech.com>

U.S. Department of Energy

Lighting Facts™ Uniform LM-79 Reporting Template

Laboratory Information:

| | |
|-------------------------|-----------------------|
| Name of Test Laboratory | Standard-Tech Co. Ltd |
| Date of Test Report | Dec.30,2015 |
| Test Report No. | GZE151161-B |
| Laboratory Contact Name | Tommy Liang |

Product Information:

| | | | |
|---|---|-----|--|
| Organization Name | AOK LED LIGHT COMPANY LIMITED | | |
| Brand Name | AOK | | |
| Model Number | AOK-180WiT(5700K) | | |
| SKU (if available) | N/A | | |
| Type of Luminaire (for integral lamps, list base type and lamp type) | Outdoor Pole/Arm-mounted Area and Roadway Luminaires | | |
| Luminaire Aperture (for downlights) | -- | in. | |
| Luminaire Length | -- | mm | |
| Luminaires Width | -- | mm | |
| Number of Units (modular products) | N/A | s | |

| Electrical Measurements: | Integrating Sphere | Goniophotometer | |
|--------------------------|--------------------|-----------------|---|
| | Output | Output | |
| Input Wattage | 184.4 | -- | W |
| Input Current | 1.5435 | -- | A |
| Input Voltage (ac) | 120.0 | -- | V |
| Power Factor | 0.9956 | -- | |
| Off-State Power | 0 | -- | W |

Photometric Characteristics

| | | | |
|---|--------|-------|------|
| Total Initial Lumen Output | 25854 | -- | lm |
| Initial Lumen Efficacy | 140.21 | -- | lm/w |
| Correlated color temperature / CCT | 5727 | -- | K |
| Color rendering index / CRI | 75.1 | -- | |
| R9 Value | 0 | -- | |
| Duv | 0.0005 | -- | |
| Luminous Intensity Distribution | | | |
| Center beam candlepower (if applicable) | ----- | ----- | cd |
| Beam angle (if applicable) | | | ° |
| Zonal lumens in the 0°-60° zone | | | % |
| Zonal lumens in the 60°-90° zone | | | % |
| Zonal lumens in the 90°-120° zone | | | % |
| Zonal lumens in the 120°-180° zone | | | % |

Laboratory: Standard-Tech Co. Ltd Testing Center
NVLAP CODE: 201011-0

Report Format Number STD/QR4909-A/2

Address: Standard-Tech Building, No.6 Guanhong Road, Guangzhou Science City, Guangzhou 510663, China

Tel: 8620-3229 0320 Fax: 8620-32290422 <http://www.standard-tech.com>

| | |
|----------------------------|--|
| Test Specifications: | |
| Date of Receipt | : Dec.14,2015 |
| Date of Test | : Dec.14,2015 |
| Test item | : Total Luminous Flux, Luminous Distribution Intensity, Luminous Efficacy, Correlated Color Temperature, Color Rendering Index, Chromaticity Coordinate, Electrical parameters |
| Reference Standard | IES LM-79-2008 Electrical and Photometric Measurements of Solid-State Lighting Products ANSI C78.377-2008 Specifications for the Chromaticity of Solid State Lighting Products CIE 13.3-1995 Method of Measuring and Specifying Colour Rendering Properties of Light Sources CIE 15-2004 Technical Report Colorimetry IESNA LM-16-93 Practical Guide to Colorimetry of Light Source IESNA TM-16-05 Technical Memorandum on Light Emitting Diode (LED) Sources and Systems |
| Reference Work Instruction | QD25 |

Test Methods

1. Photometric and Electrical measurements – Light Distribution Method:

Photometric parameters were measured using the goniophotometer and software. The ambient temperature shall be maintained at $25^{\circ}\text{C} \pm 1^{\circ}\text{C}$, measured at a point not more than 1 m from the sample and at the same height as the sample. The sample was operated at 120 Volts AC, 60Hz. It was stabilized before measurement was made. Luminous flux, luminaire efficacy, zonal lumen were calculated from the software taken at 1° vertical intervals and 22.5° horizontal intervals.

2. Photometric and Electrical Measurements – Integrating Sphere Method:

Photometric parameters were measured using an integrating sphere, a spectroradiometer and software. The ambient temperature condition inside the sphere was maintained at $25^{\circ}\text{C} \pm 1^{\circ}\text{C}$. The sample measurements were made using a spectroradiometer connected by a fiber optic cable and detector through the detector port of the integrating sphere. The sample was operated at 120 Volts AC, 60Hz. It was stabilized before measurement was made. Chromaticity coordinates, correlated color temperature and color rendering index were calculated from the spectral radiant flux measurements taken at least 5 nm intervals over the range of 380 to 780 nm.

1. Product Information:

| | |
|---------------------------|--|
| Brand Name | AOK |
| Model Number | AOK-180WiT |
| Luminaire Type | Outdoor Pole/Arm-mounted Area and Roadway Luminaires |
| Rated Voltage / Frequency | 100~ 240/277Vac, 50/60Hz |
| Nominal Power | 180W |
| Rated Initial Lamp Lumen | -- |
| Declared CCT | 3000K,3500K,4000K,4500K,5000K,5700K |
| LED Manufacturer | Philips Lumileds |
| LED Model | LUXEON 3030 2D |
| Sample Receipt Date | Dec.14,2015 |
| Sample Number | GZE151161-B1(3000K),B2(5700K) |

Photo



Laboratory: Standard-Tech Co. Ltd Testing Center
 NVLAP CODE: 201011-0

Report Format Number STD/QR4909-A/2

Address: Standard-Tech Building, No.6 Guanhong Road,Guangzhou Science City, Guangzhou 510663, China

Tel: 8620-3229 0320 Fax: 8620-32290422 <http://www.standard-tech.com>

| | |
|---|-----------------------|
| 2.1 Electrical, Photometric and Chromaticity Measurements <i>(Refer to Work Instruction QD25)</i> | IES LM-79 2008 |
|---|-----------------------|

| | | | |
|-------------------------|-------------------|---------------------------------|---------|
| Test date | 2015-12-14 | Test Ambient: | 25.2 °C |
| Test Orientation | As intended | Stabilization Time (min) | 90 |
| Model Number | AOK-180WiT(3000K) | | |

Electrical Measurement:

| Sample No. | Voltage (Vac) | Frequency (Hz) | Current (A) | Power (W) | Power Factor | THD % |
|------------|---------------|----------------|-------------|-----------|--------------|-------|
| GZE151161 | 120.0 | 60 | 1.508 | 180.1 | 0.9950 | 5.64 |
| -B1 | 277.0 | 60 | 0.6903 | 177.0 | 0.9259 | 12.57 |

Sphere-Spectroradiometer Method:

| Parameter | Result | Special Color Rendering Indices | | | |
|-----------------------------|---------------------|---------------------------------|----|-----|----|
| Test Voltage (V) | 120.0 | R1 | 69 | R9 | 0 |
| Frequency (Hz) | 60 | R2 | 83 | R10 | 59 |
| Color Rendering Index (CRI) | 72.4 | R3 | 93 | R11 | 61 |
| R9 | 0 | R4 | 67 | R12 | 48 |
| CCT (K) | 3036 | R5 | 68 | R13 | 71 |
| Chromaticity (x, y) | x=0.4328 y=0.3997 | R6 | 75 | R14 | 96 |
| Chromaticity (u', v') | u'=0.2497 v'=0.5190 | R7 | 78 | R15 | 63 |
| Duv | -0.0012 | R8 | 46 | -- | -- |

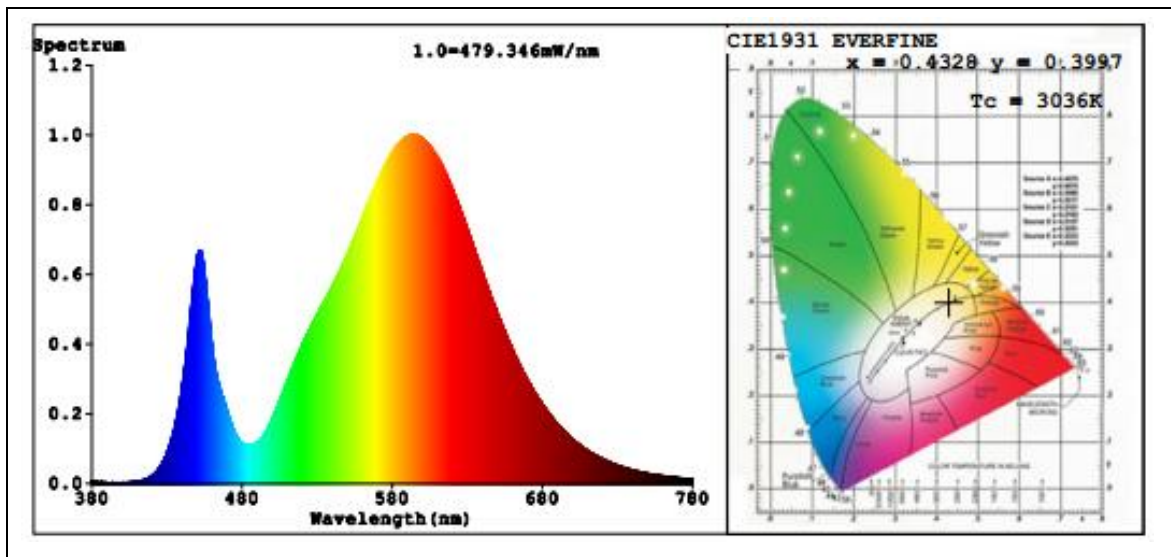
Goniophotometer Method:

| Parameter | Result |
|-------------------------------|--------|
| Test Voltage (V) | 120.1 |
| Frequency (Hz) | 60 |
| Total Luminous (lm) | 23854 |
| Luminous Efficacy (lm/W) | 132.45 |
| Beam Angle° | 94.3 |
| Center Beam Candle Power (cd) | 6495 |

Goniophotometer Method:

| Parameter | Result |
|--------------------------|--------|
| Test Voltage (V) | 277.0 |
| Frequency (Hz) | 60 |
| Total Luminous (lm) | 23730 |
| Luminous Efficacy (lm/W) | 134.06 |

Spectral Power Distribution & Chromaticity Diagram



Laboratory: Standard-Tech Co. Ltd Testing Center
NVLAP CODE: 201011-0

Report Format Number STD/QR4909-A/2

Address: Standard-Tech Building, No.6 Guanhong Road, Guangzhou Science City, Guangzhou 510663, China

Tel: 8620-3229 0320 Fax: 8620-32290422 <http://www.standard-tech.com>

Zonal Lumen Tabulation

| Zonal Lumen Summary | | |
|---------------------|----------|-------------|
| Zone | Lumens | % Luminaire |
| 0-30 | 6,011.9 | 25.2% |
| 0-40 | 10,693.9 | 44.8% |
| 0-60 | 21,457.6 | 90% |
| 60-90 | 2,351.0 | 9.9% |
| 70-100 | 849.0 | 3.6% |
| 90-120 | 9.8 | 0% |
| 0-90 | 23,808.6 | 99.8% |
| 90-180 | 45.7 | 0.2% |
| 0-180 | 23,854.3 | 100% |

| Lumens Per Zone | | | | | |
|-----------------|---------|---------|---------|--------|---------|
| Zone | Lumens | % Total | Zone | Lumens | % Total |
| 0-10 | 617.5 | 2.6% | 90-100 | 1.3 | 0% |
| 10-20 | 1,921.3 | 8.1% | 100-110 | 2.4 | 0% |
| 20-30 | 3,473.0 | 14.6% | 110-120 | 6.1 | 0% |
| 30-40 | 4,682.0 | 19.6% | 120-130 | 9.1 | 0% |
| 40-50 | 5,984.2 | 25.1% | 130-140 | 9.6 | 0% |
| 50-60 | 4,779.6 | 20.0% | 140-150 | 7.6 | 0% |
| 60-70 | 1,503.3 | 6.3% | 150-160 | 5.2 | 0% |
| 70-80 | 712.3 | 3.0% | 160-170 | 3.1 | 0% |
| 80-90 | 135.4 | 0.6% | 170-180 | 1.2 | 0% |

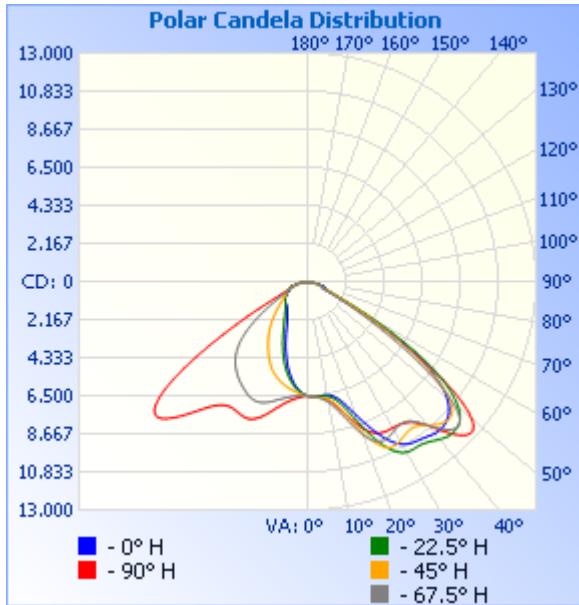
Laboratory: Standard-Tech Co. Ltd Testing Center
 NVLAP CODE: 201011-0

Report Format Number STD/QR4909-A/2

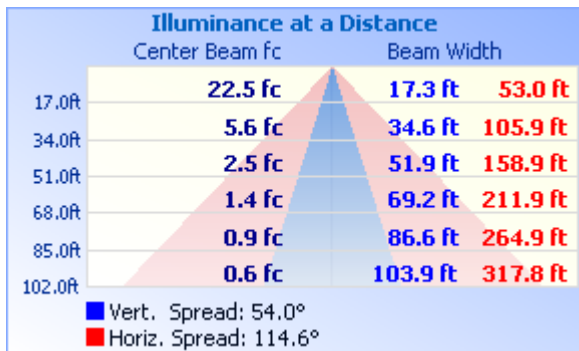
Address: Standard-Tech Building, No.6 Guanhong Road, Guangzhou Science City, Guangzhou 510663, China

Tel: 8620-3229 0320 Fax: 8620-32290422 <http://www.standard-tech.com>

Photometric Data



Illuminance Plots



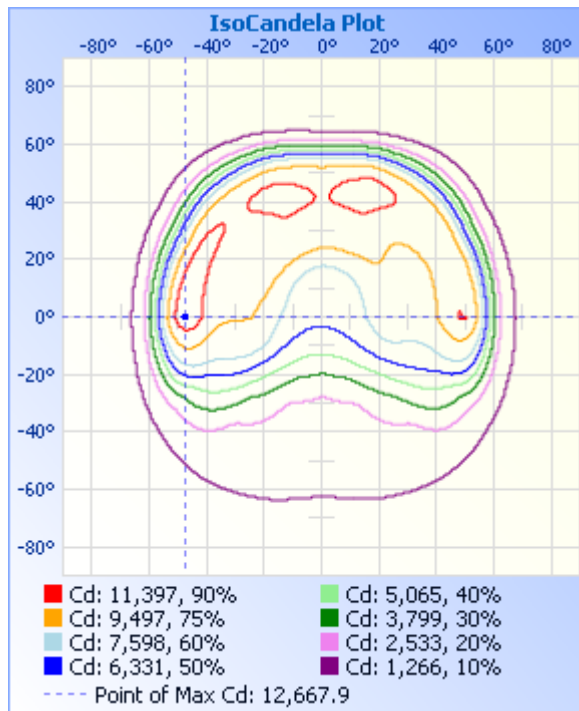
Laboratory: Standard-Tech Co. Ltd Testing Center
NVLAP CODE: 201011-0

Report Format Number STD/QR4909-A/2

Address: Standard-Tech Building, No.6 Guanhong Road, Guangzhou Science City, Guangzhou 510663, China

Tel: 8620-3229 0320 Fax: 8620-32290422 <http://www.standard-tech.com>

ISOCANDELA DIAGRAM



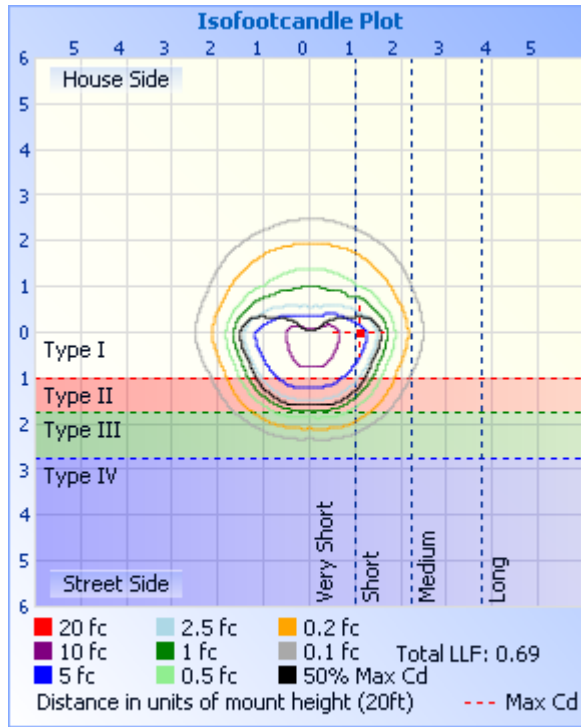
ISOLUX DIAGRAM

Laboratory: Standard-Tech Co. Ltd Testing Center
NVLAP CODE: 201011-0

Report Format Number STD/QR4909-A/2

Address: Standard-Tech Building, No.6 Guanhong Road, Guangzhou Science City, Guangzhou 510663, China

Tel: 8620-3229 0320 Fax: 8620-32290422 <http://www.standard-tech.com>



Candela Table - Type C

| | 0 | 22.5 | 45 | 67.5 | 90 | 112.5 | 135 | 157.5 | 180 | 202.5 | 225 | 247.5 | 270 | 292.5 | 315 | 337.5 | 360 |
|----|------|------|------|------|------|-------|------|-------|------|-------|------|-------|------|-------|------|-------|------|
| 0 | 6495 | 6495 | 6495 | 6495 | 6495 | 6495 | 6495 | 6495 | 6495 | 6495 | 6495 | 6495 | 6495 | 6495 | 6495 | 6495 | 6495 |
| 1 | 6526 | 6522 | 6514 | 6504 | 6488 | 6477 | 6463 | 6455 | 6454 | 6459 | 6474 | 6491 | 6509 | 6519 | 6527 | 6527 | 6526 |
| 2 | 6544 | 6541 | 6531 | 6520 | 6489 | 6466 | 6428 | 6404 | 6400 | 6414 | 6450 | 6492 | 6532 | 6549 | 6556 | 6551 | 6544 |
| 3 | 6552 | 6551 | 6547 | 6541 | 6499 | 6460 | 6394 | 6347 | 6332 | 6358 | 6423 | 6496 | 6561 | 6581 | 6582 | 6567 | 6552 |
| 4 | 6554 | 6557 | 6565 | 6572 | 6519 | 6458 | 6357 | 6276 | 6248 | 6287 | 6390 | 6507 | 6599 | 6619 | 6609 | 6576 | 6554 |
| 5 | 6550 | 6557 | 6584 | 6610 | 6548 | 6463 | 6317 | 6199 | 6152 | 6209 | 6356 | 6523 | 6641 | 6661 | 6631 | 6579 | 6550 |
| 6 | 6542 | 6559 | 6610 | 6658 | 6585 | 6472 | 6277 | 6113 | 6045 | 6124 | 6320 | 6546 | 6691 | 6708 | 6654 | 6580 | 6542 |
| 7 | 6533 | 6563 | 6642 | 6716 | 6635 | 6488 | 6233 | 6013 | 5924 | 6026 | 6279 | 6576 | 6750 | 6760 | 6678 | 6580 | 6533 |
| 8 | 6529 | 6572 | 6682 | 6788 | 6696 | 6515 | 6190 | 5907 | 5789 | 5918 | 6239 | 6610 | 6815 | 6817 | 6705 | 6585 | 6529 |
| 9 | 6533 | 6591 | 6736 | 6874 | 6770 | 6548 | 6144 | 5788 | 5646 | 5804 | 6196 | 6651 | 6892 | 6883 | 6740 | 6596 | 6533 |
| 10 | 6550 | 6624 | 6804 | 6984 | 6862 | 6593 | 6096 | 5663 | 5493 | 5679 | 6152 | 6695 | 6979 | 6964 | 6786 | 6619 | 6550 |
| 11 | 6582 | 6676 | 6899 | 7121 | 6973 | 6648 | 6048 | 5529 | 5327 | 5546 | 6105 | 6745 | 7075 | 7058 | 6851 | 6657 | 6582 |
| 12 | 6633 | 6750 | 7020 | 7281 | 7104 | 6713 | 5999 | 5390 | 5154 | 5408 | 6056 | 6800 | 7184 | 7167 | 6933 | 6715 | 6633 |
| 13 | 6709 | 6855 | 7178 | 7471 | 7258 | 6788 | 5951 | 5245 | 4977 | 5260 | 6004 | 6863 | 7305 | 7289 | 7039 | 6795 | 6709 |

Laboratory: Standard-Tech Co. Ltd Testing Center
 NVLAP CODE: 201011-0

Report Format Number STD/QR4909-A/2

Address: Standard-Tech Building, No.6 Guanhong Road, Guangzhou Science City, Guangzhou 510663, China

Tel: 8620-3229 0320 Fax: 8620-32290422 <http://www.standard-tech.com>

| | | | | | | | | | | | | | | | | | |
|----|-------|-------|-------|-------|-------|------|------|------|------|------|------|------|-------|-------|-------|-------|-------|
| 14 | 6812 | 6994 | 7371 | 7692 | 7435 | 6876 | 5904 | 5094 | 4793 | 5110 | 5950 | 6927 | 7434 | 7422 | 7165 | 6906 | 6812 |
| 15 | 6946 | 7169 | 7603 | 7935 | 7627 | 6971 | 5856 | 4942 | 4606 | 4955 | 5894 | 6995 | 7574 | 7566 | 7316 | 7045 | 6946 |
| 16 | 7113 | 7387 | 7864 | 8200 | 7846 | 7073 | 5805 | 4780 | 4409 | 4792 | 5830 | 7066 | 7716 | 7726 | 7489 | 7219 | 7113 |
| 17 | 7314 | 7640 | 8157 | 8478 | 8074 | 7186 | 5751 | 4617 | 4213 | 4629 | 5765 | 7141 | 7864 | 7889 | 7686 | 7422 | 7314 |
| 18 | 7551 | 7931 | 8472 | 8759 | 8314 | 7304 | 5697 | 4451 | 4017 | 4463 | 5697 | 7207 | 8003 | 8052 | 7901 | 7655 | 7551 |
| 19 | 7809 | 8255 | 8798 | 9038 | 8547 | 7425 | 5637 | 4283 | 3820 | 4295 | 5628 | 7268 | 8139 | 8207 | 8134 | 7917 | 7809 |
| 20 | 8092 | 8598 | 9131 | 9301 | 8775 | 7543 | 5572 | 4110 | 3629 | 4124 | 5554 | 7319 | 8255 | 8350 | 8375 | 8199 | 8092 |
| 21 | 8383 | 8962 | 9445 | 9526 | 8985 | 7657 | 5500 | 3940 | 3444 | 3955 | 5472 | 7362 | 8352 | 8478 | 8619 | 8492 | 8383 |
| 22 | 8689 | 9323 | 9742 | 9712 | 9165 | 7757 | 5427 | 3772 | 3278 | 3790 | 5384 | 7393 | 8428 | 8581 | 8855 | 8794 | 8689 |
| 23 | 8997 | 9677 | 10003 | 9854 | 9318 | 7840 | 5343 | 3605 | 3112 | 3624 | 5287 | 7412 | 8482 | 8651 | 9077 | 9098 | 8997 |
| 24 | 9292 | 10006 | 10224 | 9951 | 9433 | 7902 | 5253 | 3443 | 2947 | 3465 | 5184 | 7410 | 8508 | 8691 | 9265 | 9391 | 9292 |
| 25 | 9585 | 10307 | 10390 | 10009 | 9517 | 7944 | 5154 | 3292 | 2807 | 3317 | 5074 | 7393 | 8509 | 8696 | 9413 | 9666 | 9585 |
| 26 | 9865 | 10578 | 10504 | 10024 | 9570 | 7964 | 5049 | 3142 | 2678 | 3168 | 4963 | 7360 | 8491 | 8672 | 9524 | 9918 | 9865 |
| 27 | 10123 | 10802 | 10559 | 9996 | 9601 | 7964 | 4941 | 2992 | 2565 | 3020 | 4848 | 7320 | 8464 | 8623 | 9599 | 10142 | 10123 |
| 28 | 10346 | 10994 | 10568 | 9945 | 9616 | 7945 | 4830 | 2863 | 2464 | 2888 | 4730 | 7267 | 8431 | 8563 | 9636 | 10335 | 10346 |
| 29 | 10532 | 11128 | 10542 | 9880 | 9620 | 7910 | 4715 | 2744 | 2378 | 2771 | 4609 | 7208 | 8400 | 8506 | 9636 | 10491 | 10532 |
| 30 | 10684 | 11215 | 10490 | 9811 | 9622 | 7864 | 4591 | 2636 | 2301 | 2661 | 4483 | 7149 | 8379 | 8456 | 9611 | 10610 | 10684 |
| 31 | 10800 | 11258 | 10421 | 9753 | 9631 | 7799 | 4470 | 2537 | 2232 | 2564 | 4362 | 7080 | 8373 | 8419 | 9578 | 10694 | 10800 |
| 32 | 10880 | 11274 | 10352 | 9708 | 9647 | 7722 | 4346 | 2447 | 2171 | 2472 | 4240 | 7014 | 8387 | 8402 | 9544 | 10763 | 10880 |
| 33 | 10935 | 11281 | 10293 | 9680 | 9681 | 7635 | 4222 | 2365 | 2118 | 2390 | 4127 | 6949 | 8426 | 8411 | 9520 | 10822 | 10935 |
| 34 | 10973 | 11287 | 10251 | 9681 | 9727 | 7541 | 4097 | 2292 | 2072 | 2316 | 4012 | 6879 | 8483 | 8451 | 9518 | 10881 | 10973 |
| 35 | 11013 | 11308 | 10231 | 9726 | 9792 | 7439 | 3969 | 2223 | 2029 | 2246 | 3893 | 6798 | 8574 | 8527 | 9539 | 10957 | 11013 |
| 36 | 11051 | 11356 | 10254 | 9809 | 9890 | 7336 | 3844 | 2161 | 1989 | 2183 | 3777 | 6721 | 8692 | 8635 | 9590 | 11062 | 11051 |
| 37 | 11102 | 11426 | 10305 | 9954 | 10025 | 7221 | 3716 | 2104 | 1953 | 2126 | 3659 | 6639 | 8843 | 8779 | 9675 | 11190 | 11102 |
| 38 | 11160 | 11513 | 10397 | 10147 | 10205 | 7097 | 3588 | 2050 | 1919 | 2071 | 3536 | 6554 | 9039 | 8968 | 9789 | 11339 | 11160 |
| 39 | 11216 | 11613 | 10520 | 10401 | 10427 | 6970 | 3460 | 2000 | 1887 | 2020 | 3413 | 6462 | 9269 | 9190 | 9920 | 11501 | 11216 |
| 40 | 11268 | 11713 | 10661 | 10685 | 10714 | 6833 | 3332 | 1953 | 1860 | 1972 | 3288 | 6367 | 9538 | 9437 | 10064 | 11651 | 11268 |
| 41 | 11307 | 11797 | 10805 | 10966 | 11043 | 6687 | 3197 | 1909 | 1835 | 1928 | 3163 | 6263 | 9820 | 9696 | 10223 | 11790 | 11307 |
| 42 | 11319 | 11873 | 10943 | 11246 | 11412 | 6528 | 3063 | 1867 | 1813 | 1887 | 3039 | 6154 | 10120 | 9960 | 10379 | 11920 | 11319 |
| 43 | 11297 | 11920 | 11063 | 11493 | 11771 | 6365 | 2928 | 1828 | 1793 | 1848 | 2920 | 6030 | 10416 | 10218 | 10541 | 12031 | 11297 |
| 44 | 11249 | 11928 | 11152 | 11702 | 12090 | 6197 | 2796 | 1793 | 1774 | 1813 | 2799 | 5895 | 10707 | 10469 | 10684 | 12120 | 11249 |

Laboratory: Standard-Tech Co. Ltd Testing Center
 NVLAP CODE: 201011-0

Report Format Number STD/QR4909-A/2

Address: Standard-Tech Building, No.6 Guanhong Road, Guangzhou Science City, Guangzhou 510663, China

Tel: 8620-3229 0320 Fax: 8620-32290422 <http://www.standard-tech.com>

| | | | | | | | | | | | | | | | | | |
|----|-------|-------|-------|-------|-------|------|------|------|------|------|------|------|-------|-------|-------|-------|-------|
| 45 | 11186 | 11903 | 11201 | 11843 | 12364 | 6016 | 2667 | 1762 | 1755 | 1779 | 2675 | 5746 | 10977 | 10693 | 10809 | 12185 | 11186 |
| 46 | 11105 | 11865 | 11220 | 11900 | 12563 | 5823 | 2542 | 1733 | 1736 | 1749 | 2554 | 5581 | 11216 | 10857 | 10902 | 12207 | 11105 |
| 47 | 10988 | 11798 | 11187 | 11845 | 12668 | 5608 | 2418 | 1707 | 1718 | 1721 | 2434 | 5405 | 11401 | 10941 | 10957 | 12170 | 10988 |
| 48 | 10828 | 11676 | 11079 | 11661 | 12658 | 5389 | 2301 | 1684 | 1700 | 1696 | 2317 | 5209 | 11504 | 10921 | 10948 | 12071 | 10828 |
| 49 | 10626 | 11486 | 10883 | 11340 | 12511 | 5157 | 2186 | 1662 | 1680 | 1671 | 2205 | 4990 | 11509 | 10784 | 10873 | 11920 | 10626 |
| 50 | 10383 | 11230 | 10613 | 10886 | 12219 | 4900 | 2078 | 1641 | 1660 | 1648 | 2096 | 4753 | 11394 | 10509 | 10710 | 11711 | 10383 |
| 51 | 10085 | 10899 | 10237 | 10282 | 11783 | 4628 | 1977 | 1622 | 1638 | 1625 | 1996 | 4491 | 11133 | 10095 | 10443 | 11428 | 10085 |
| 52 | 9724 | 10500 | 9767 | 9565 | 11188 | 4331 | 1883 | 1603 | 1613 | 1603 | 1900 | 4208 | 10732 | 9538 | 10081 | 11068 | 9724 |
| 53 | 9277 | 10023 | 9199 | 8751 | 10447 | 4031 | 1799 | 1583 | 1586 | 1582 | 1814 | 3911 | 10170 | 8835 | 9592 | 10611 | 9277 |
| 54 | 8741 | 9466 | 8548 | 7854 | 9578 | 3722 | 1725 | 1564 | 1558 | 1560 | 1736 | 3610 | 9452 | 8031 | 9003 | 10049 | 8741 |
| 55 | 8092 | 8824 | 7830 | 6928 | 8622 | 3407 | 1660 | 1543 | 1527 | 1538 | 1668 | 3299 | 8601 | 7141 | 8302 | 9379 | 8092 |
| 56 | 7338 | 8100 | 7055 | 5993 | 7600 | 3092 | 1604 | 1522 | 1497 | 1516 | 1609 | 2988 | 7667 | 6216 | 7512 | 8575 | 7338 |
| 57 | 6488 | 7284 | 6256 | 5098 | 6589 | 2777 | 1557 | 1500 | 1467 | 1492 | 1558 | 2678 | 6676 | 5302 | 6671 | 7681 | 6488 |
| 58 | 5551 | 6418 | 5444 | 4272 | 5592 | 2489 | 1514 | 1477 | 1434 | 1468 | 1512 | 2397 | 5694 | 4424 | 5788 | 6701 | 5551 |
| 59 | 4635 | 5523 | 4659 | 3538 | 4678 | 2225 | 1477 | 1451 | 1398 | 1442 | 1472 | 2145 | 4742 | 3637 | 4910 | 5663 | 4635 |
| 60 | 3783 | 4648 | 3918 | 2917 | 3971 | 1991 | 1444 | 1424 | 1359 | 1414 | 1437 | 1923 | 3903 | 2953 | 4096 | 4664 | 3783 |
| 61 | 3001 | 3800 | 3244 | 2380 | 3264 | 1782 | 1411 | 1394 | 1313 | 1383 | 1404 | 1729 | 3172 | 2393 | 3344 | 3718 | 3001 |
| 62 | 2331 | 3061 | 2657 | 1967 | 2564 | 1610 | 1381 | 1361 | 1258 | 1350 | 1372 | 1573 | 2570 | 1954 | 2702 | 2924 | 2331 |
| 63 | 1770 | 2415 | 2162 | 1636 | 2099 | 1466 | 1348 | 1327 | 1220 | 1317 | 1338 | 1443 | 2102 | 1618 | 2172 | 2268 | 1770 |
| 64 | 1488 | 1904 | 1757 | 1424 | 1750 | 1352 | 1314 | 1292 | 1204 | 1281 | 1303 | 1340 | 1746 | 1407 | 1753 | 1754 | 1488 |
| 65 | 1214 | 1614 | 1524 | 1216 | 1490 | 1257 | 1275 | 1254 | 1195 | 1244 | 1265 | 1255 | 1578 | 1199 | 1517 | 1497 | 1214 |
| 66 | 940 | 1327 | 1293 | 1087 | 1304 | 1177 | 1235 | 1213 | 1186 | 1205 | 1224 | 1182 | 1412 | 1081 | 1283 | 1244 | 940 |
| 67 | 878 | 1040 | 1062 | 993 | 1177 | 1101 | 1192 | 1170 | 1175 | 1163 | 1181 | 1110 | 1246 | 999 | 1050 | 991 | 878 |
| 68 | 865 | 928 | 942 | 923 | 1090 | 1026 | 1148 | 1123 | 1161 | 1118 | 1134 | 1038 | 1187 | 944 | 933 | 915 | 865 |
| 69 | 855 | 881 | 858 | 871 | 1034 | 953 | 1101 | 1075 | 1139 | 1071 | 1084 | 969 | 1152 | 906 | 850 | 899 | 855 |
| 70 | 857 | 869 | 790 | 835 | 994 | 883 | 1051 | 1029 | 1110 | 1025 | 1031 | 897 | 1128 | 872 | 787 | 912 | 857 |
| 71 | 937 | 863 | 729 | 815 | 957 | 813 | 999 | 985 | 1074 | 980 | 979 | 821 | 1097 | 827 | 732 | 915 | 937 |
| 72 | 1019 | 847 | 674 | 787 | 922 | 744 | 946 | 942 | 1027 | 935 | 926 | 748 | 1058 | 764 | 681 | 907 | 1019 |
| 73 | 981 | 813 | 624 | 729 | 884 | 678 | 892 | 896 | 969 | 887 | 872 | 679 | 1005 | 693 | 632 | 875 | 981 |
| 74 | 843 | 756 | 575 | 661 | 834 | 619 | 838 | 845 | 902 | 838 | 819 | 618 | 931 | 622 | 586 | 818 | 843 |
| 75 | 678 | 681 | 531 | 591 | 769 | 566 | 784 | 787 | 831 | 779 | 764 | 561 | 840 | 558 | 541 | 745 | 678 |

Laboratory: Standard-Tech Co. Ltd Testing Center
 NVLAP CODE: 201011-0

Report Format Number STD/QR4909-A/2

Address: Standard-Tech Building, No.6 Guanhong Road, Guangzhou Science City, Guangzhou 510663, China

Tel: 8620-3229 0320 Fax: 8620-32290422 <http://www.standard-tech.com>

| | | | | | | | | | | | | | | | | | |
|-----|-----|-----|-----|-----|-----|-----|-----|-----|-----|-----|-----|-----|-----|-----|-----|-----|-----|
| 76 | 551 | 608 | 489 | 525 | 689 | 519 | 728 | 730 | 761 | 722 | 707 | 512 | 737 | 497 | 489 | 664 | 551 |
| 77 | 456 | 540 | 439 | 463 | 602 | 475 | 667 | 669 | 689 | 661 | 644 | 465 | 630 | 435 | 432 | 569 | 456 |
| 78 | 379 | 445 | 387 | 406 | 516 | 436 | 598 | 606 | 620 | 598 | 571 | 429 | 526 | 377 | 375 | 453 | 379 |
| 79 | 306 | 353 | 336 | 351 | 439 | 399 | 514 | 541 | 549 | 532 | 484 | 393 | 436 | 323 | 321 | 346 | 306 |
| 80 | 246 | 269 | 287 | 302 | 371 | 363 | 411 | 476 | 479 | 466 | 380 | 355 | 358 | 278 | 272 | 258 | 246 |
| 81 | 205 | 200 | 242 | 258 | 311 | 324 | 324 | 411 | 406 | 398 | 297 | 314 | 287 | 239 | 225 | 189 | 205 |
| 82 | 173 | 144 | 198 | 219 | 251 | 287 | 267 | 342 | 332 | 326 | 243 | 274 | 224 | 202 | 178 | 135 | 173 |
| 83 | 140 | 102 | 155 | 183 | 205 | 248 | 213 | 271 | 257 | 252 | 192 | 232 | 188 | 167 | 134 | 94 | 140 |
| 84 | 104 | 68 | 119 | 148 | 171 | 202 | 159 | 197 | 185 | 178 | 147 | 187 | 157 | 130 | 98 | 63 | 104 |
| 85 | 66 | 44 | 86 | 113 | 141 | 156 | 115 | 131 | 113 | 113 | 104 | 141 | 128 | 97 | 68 | 40 | 66 |
| 86 | 29 | 24 | 56 | 79 | 111 | 112 | 76 | 72 | 49 | 58 | 66 | 99 | 97 | 65 | 42 | 20 | 29 |
| 87 | 4 | 8 | 29 | 48 | 76 | 70 | 42 | 20 | 6 | 13 | 33 | 57 | 55 | 36 | 16 | 5 | 4 |
| 88 | 1 | 1 | 7 | 15 | 18 | 14 | 10 | 4 | 3 | 3 | 6 | 5 | 4 | 4 | 1 | 1 | 1 |
| 89 | 1 | 1 | 1 | 1 | 1 | 12 | 9 | 1 | 1 | 1 | 5 | 1 | 1 | 1 | 1 | 1 | 1 |
| 90 | 1 | 1 | 1 | 1 | 1 | 10 | 8 | 1 | 1 | 1 | 5 | 1 | 1 | 1 | 1 | 1 | 1 |
| 91 | 1 | 1 | 1 | 1 | 1 | 8 | 6 | 1 | 1 | 1 | 4 | 1 | 1 | 1 | 1 | 1 | 1 |
| 92 | 1 | 1 | 1 | 1 | 1 | 6 | 5 | 1 | 1 | 1 | 3 | 1 | 1 | 1 | 1 | 1 | 1 |
| 93 | 1 | 1 | 1 | 1 | 1 | 4 | 3 | 1 | 1 | 1 | 2 | 1 | 1 | 1 | 1 | 1 | 1 |
| 94 | 1 | 1 | 1 | 1 | 1 | 2 | 2 | 1 | 1 | 1 | 1 | 1 | 1 | 1 | 1 | 1 | 1 |
| 95 | 1 | 1 | 1 | 1 | 1 | 1 | 0 | 1 | 1 | 1 | 1 | 1 | 1 | 1 | 1 | 1 | 1 |
| 96 | 1 | 1 | 1 | 1 | 1 | 1 | 1 | 1 | 1 | 1 | 1 | 1 | 1 | 1 | 1 | 1 | 1 |
| 97 | 1 | 1 | 1 | 1 | 1 | 1 | 1 | 1 | 1 | 1 | 1 | 1 | 1 | 1 | 1 | 1 | 1 |
| 98 | 1 | 1 | 1 | 1 | 1 | 1 | 1 | 1 | 1 | 1 | 1 | 1 | 1 | 1 | 1 | 1 | 1 |
| 99 | 1 | 1 | 1 | 1 | 1 | 1 | 1 | 1 | 1 | 1 | 1 | 1 | 1 | 1 | 1 | 1 | 1 |
| 100 | 1 | 1 | 1 | 1 | 1 | 1 | 1 | 1 | 1 | 1 | 1 | 1 | 1 | 1 | 1 | 1 | 1 |
| 101 | 1 | 1 | 1 | 1 | 2 | 1 | 1 | 1 | 1 | 1 | 1 | 1 | 2 | 1 | 1 | 1 | 1 |
| 102 | 1 | 1 | 1 | 1 | 2 | 1 | 1 | 1 | 1 | 2 | 1 | 1 | 2 | 1 | 1 | 1 | 1 |
| 103 | 1 | 1 | 1 | 1 | 2 | 1 | 1 | 2 | 2 | 2 | 2 | 1 | 2 | 1 | 1 | 1 | 1 |
| 104 | 1 | 1 | 1 | 2 | 2 | 2 | 2 | 2 | 2 | 2 | 2 | 2 | 3 | 2 | 1 | 1 | 1 |
| 105 | 1 | 1 | 1 | 2 | 3 | 2 | 2 | 3 | 2 | 3 | 3 | 2 | 3 | 2 | 1 | 1 | 1 |
| 106 | 1 | 2 | 2 | 2 | 4 | 2 | 3 | 3 | 3 | 3 | 3 | 2 | 4 | 2 | 1 | 1 | 1 |

Laboratory: Standard-Tech Co. Ltd Testing Center
 NVLAP CODE: 201011-0

Report Format Number STD/QR4909-A/2

Address: Standard-Tech Building, No.6 Guanhong Road, Guangzhou Science City, Guangzhou 510663, China

Tel: 8620-3229 0320 Fax: 8620-32290422 <http://www.standard-tech.com>

| | | | | | | | | | | | | | | | | | |
|-----|---|---|---|----|----|----|----|----|----|----|----|----|----|----|---|---|---|
| 107 | 2 | 2 | 2 | 2 | 4 | 3 | 3 | 4 | 3 | 4 | 4 | 3 | 5 | 2 | 2 | 2 | 2 |
| 108 | 2 | 2 | 2 | 3 | 4 | 3 | 4 | 4 | 4 | 4 | 4 | 3 | 6 | 3 | 2 | 2 | 2 |
| 109 | 2 | 2 | 2 | 3 | 5 | 4 | 4 | 5 | 4 | 5 | 5 | 4 | 7 | 3 | 2 | 2 | 2 |
| 110 | 2 | 2 | 2 | 3 | 6 | 5 | 5 | 5 | 5 | 5 | 5 | 5 | 7 | 3 | 2 | 2 | 2 |
| 111 | 2 | 2 | 2 | 4 | 7 | 5 | 6 | 6 | 5 | 6 | 6 | 5 | 9 | 4 | 2 | 2 | 2 |
| 112 | 2 | 2 | 2 | 4 | 7 | 6 | 6 | 6 | 6 | 7 | 6 | 6 | 10 | 4 | 2 | 2 | 2 |
| 113 | 2 | 2 | 2 | 5 | 8 | 7 | 7 | 6 | 6 | 7 | 7 | 7 | 11 | 5 | 2 | 2 | 2 |
| 114 | 2 | 2 | 2 | 5 | 9 | 8 | 8 | 7 | 7 | 8 | 8 | 8 | 12 | 5 | 2 | 2 | 2 |
| 115 | 2 | 2 | 3 | 5 | 10 | 8 | 8 | 7 | 7 | 7 | 9 | 8 | 13 | 5 | 3 | 2 | 2 |
| 116 | 2 | 2 | 3 | 6 | 10 | 9 | 9 | 7 | 8 | 7 | 9 | 9 | 14 | 6 | 2 | 2 | 2 |
| 117 | 2 | 2 | 3 | 6 | 11 | 10 | 10 | 7 | 8 | 7 | 10 | 10 | 14 | 6 | 3 | 2 | 2 |
| 118 | 2 | 2 | 3 | 7 | 11 | 10 | 10 | 8 | 9 | 8 | 11 | 10 | 15 | 6 | 3 | 2 | 2 |
| 119 | 2 | 2 | 3 | 7 | 12 | 11 | 11 | 9 | 9 | 9 | 11 | 11 | 16 | 7 | 3 | 2 | 2 |
| 120 | 2 | 2 | 3 | 8 | 12 | 11 | 11 | 11 | 9 | 11 | 12 | 11 | 16 | 7 | 3 | 2 | 2 |
| 121 | 3 | 3 | 4 | 8 | 13 | 12 | 12 | 12 | 11 | 12 | 13 | 12 | 17 | 8 | 3 | 3 | 3 |
| 122 | 3 | 3 | 4 | 9 | 13 | 12 | 12 | 13 | 12 | 13 | 13 | 12 | 17 | 8 | 3 | 3 | 3 |
| 123 | 3 | 3 | 4 | 9 | 13 | 13 | 12 | 13 | 13 | 13 | 13 | 13 | 17 | 9 | 4 | 3 | 3 |
| 124 | 3 | 3 | 4 | 10 | 13 | 13 | 12 | 13 | 14 | 14 | 14 | 13 | 18 | 10 | 4 | 3 | 3 |
| 125 | 3 | 3 | 4 | 10 | 13 | 13 | 12 | 13 | 15 | 14 | 14 | 14 | 18 | 10 | 4 | 3 | 3 |
| 126 | 3 | 3 | 4 | 11 | 14 | 14 | 13 | 13 | 15 | 14 | 14 | 15 | 19 | 11 | 4 | 3 | 3 |
| 127 | 3 | 3 | 4 | 11 | 14 | 14 | 13 | 14 | 16 | 15 | 15 | 15 | 19 | 11 | 4 | 3 | 3 |
| 128 | 3 | 3 | 4 | 11 | 15 | 14 | 13 | 14 | 16 | 15 | 15 | 16 | 20 | 12 | 4 | 3 | 3 |
| 129 | 3 | 3 | 5 | 11 | 16 | 14 | 14 | 14 | 16 | 16 | 16 | 16 | 20 | 12 | 4 | 3 | 3 |
| 130 | 3 | 3 | 5 | 11 | 16 | 14 | 14 | 15 | 16 | 17 | 16 | 16 | 20 | 12 | 4 | 3 | 3 |
| 131 | 3 | 4 | 5 | 12 | 16 | 15 | 14 | 16 | 17 | 19 | 17 | 16 | 20 | 12 | 4 | 3 | 3 |
| 132 | 3 | 4 | 5 | 12 | 16 | 15 | 15 | 17 | 17 | 19 | 17 | 17 | 20 | 12 | 5 | 3 | 3 |
| 133 | 3 | 4 | 5 | 12 | 16 | 15 | 15 | 18 | 17 | 20 | 17 | 17 | 19 | 12 | 5 | 3 | 3 |
| 134 | 3 | 4 | 5 | 12 | 16 | 15 | 15 | 19 | 18 | 21 | 17 | 17 | 19 | 12 | 5 | 4 | 3 |
| 135 | 3 | 4 | 6 | 12 | 16 | 15 | 15 | 20 | 18 | 21 | 17 | 17 | 19 | 12 | 5 | 4 | 3 |
| 136 | 3 | 4 | 6 | 12 | 15 | 15 | 14 | 20 | 18 | 21 | 17 | 17 | 19 | 12 | 5 | 4 | 3 |
| 137 | 3 | 4 | 6 | 12 | 15 | 15 | 14 | 20 | 18 | 21 | 16 | 17 | 19 | 12 | 5 | 4 | 3 |

Laboratory: Standard-Tech Co. Ltd Testing Center
 NVLAP CODE: 201011-0

Report Format Number STD/QR4909-A/2

Address: Standard-Tech Building, No.6 Guanhong Road, Guangzhou Science City, Guangzhou 510663, China

Tel: 8620-3229 0320 Fax: 8620-32290422 <http://www.standard-tech.com>

| | | | | | | | | | | | | | | | | | |
|-----|----|----|----|----|----|----|----|----|----|----|----|----|----|----|----|----|----|
| 138 | 4 | 5 | 6 | 12 | 15 | 15 | 14 | 20 | 18 | 20 | 16 | 17 | 19 | 12 | 6 | 4 | 4 |
| 139 | 4 | 5 | 6 | 12 | 15 | 16 | 14 | 19 | 18 | 20 | 16 | 18 | 19 | 12 | 6 | 4 | 4 |
| 140 | 4 | 5 | 6 | 12 | 15 | 16 | 13 | 19 | 17 | 20 | 15 | 18 | 19 | 12 | 6 | 5 | 4 |
| 141 | 4 | 5 | 6 | 12 | 15 | 15 | 13 | 18 | 17 | 19 | 15 | 18 | 19 | 12 | 6 | 5 | 4 |
| 142 | 4 | 5 | 6 | 12 | 15 | 15 | 13 | 18 | 17 | 19 | 15 | 18 | 19 | 11 | 6 | 5 | 4 |
| 143 | 4 | 5 | 6 | 11 | 15 | 15 | 13 | 17 | 17 | 18 | 15 | 18 | 18 | 11 | 6 | 5 | 4 |
| 144 | 4 | 5 | 6 | 11 | 15 | 15 | 13 | 17 | 16 | 18 | 16 | 17 | 17 | 10 | 7 | 5 | 4 |
| 145 | 4 | 6 | 6 | 11 | 14 | 14 | 13 | 16 | 16 | 17 | 16 | 17 | 17 | 10 | 7 | 5 | 4 |
| 146 | 5 | 6 | 7 | 11 | 14 | 14 | 13 | 16 | 16 | 17 | 16 | 17 | 17 | 10 | 7 | 5 | 5 |
| 147 | 5 | 6 | 7 | 11 | 14 | 14 | 13 | 16 | 16 | 17 | 17 | 16 | 16 | 10 | 8 | 6 | 5 |
| 148 | 5 | 6 | 7 | 11 | 13 | 14 | 13 | 16 | 16 | 17 | 17 | 16 | 16 | 10 | 8 | 6 | 5 |
| 149 | 5 | 7 | 8 | 11 | 13 | 13 | 13 | 15 | 16 | 17 | 17 | 16 | 15 | 9 | 8 | 6 | 5 |
| 150 | 6 | 7 | 8 | 11 | 13 | 13 | 13 | 15 | 16 | 16 | 17 | 15 | 15 | 9 | 9 | 6 | 6 |
| 151 | 6 | 7 | 9 | 11 | 13 | 13 | 13 | 15 | 16 | 16 | 17 | 15 | 14 | 9 | 9 | 7 | 6 |
| 152 | 6 | 7 | 9 | 11 | 12 | 13 | 13 | 14 | 16 | 16 | 17 | 14 | 13 | 9 | 10 | 7 | 6 |
| 153 | 7 | 8 | 9 | 10 | 12 | 13 | 13 | 14 | 16 | 15 | 16 | 14 | 12 | 9 | 10 | 8 | 7 |
| 154 | 7 | 8 | 10 | 10 | 11 | 12 | 13 | 13 | 15 | 15 | 16 | 14 | 11 | 9 | 10 | 8 | 7 |
| 155 | 7 | 8 | 10 | 10 | 11 | 12 | 13 | 13 | 14 | 14 | 16 | 14 | 11 | 10 | 10 | 8 | 7 |
| 156 | 7 | 8 | 10 | 10 | 11 | 12 | 12 | 13 | 13 | 13 | 15 | 14 | 10 | 10 | 10 | 8 | 7 |
| 157 | 8 | 8 | 10 | 10 | 10 | 12 | 12 | 12 | 13 | 13 | 14 | 14 | 10 | 10 | 10 | 9 | 8 |
| 158 | 8 | 8 | 10 | 10 | 9 | 11 | 12 | 12 | 13 | 12 | 14 | 13 | 10 | 10 | 10 | 9 | 8 |
| 159 | 8 | 8 | 10 | 10 | 9 | 11 | 12 | 12 | 12 | 12 | 13 | 13 | 10 | 10 | 10 | 9 | 8 |
| 160 | 8 | 9 | 10 | 10 | 9 | 11 | 11 | 12 | 12 | 12 | 13 | 13 | 11 | 10 | 10 | 9 | 8 |
| 161 | 9 | 9 | 10 | 10 | 10 | 10 | 11 | 12 | 12 | 12 | 13 | 13 | 11 | 9 | 10 | 9 | 9 |
| 162 | 9 | 9 | 10 | 10 | 10 | 10 | 11 | 12 | 12 | 12 | 12 | 13 | 11 | 9 | 10 | 10 | 9 |
| 163 | 9 | 9 | 10 | 9 | 10 | 9 | 11 | 12 | 12 | 12 | 12 | 13 | 11 | 9 | 11 | 10 | 9 |
| 164 | 9 | 10 | 10 | 9 | 10 | 9 | 11 | 12 | 12 | 11 | 12 | 13 | 11 | 9 | 11 | 10 | 9 |
| 165 | 10 | 10 | 10 | 9 | 10 | 9 | 10 | 12 | 12 | 11 | 12 | 13 | 10 | 5 | 11 | 10 | 10 |
| 166 | 10 | 10 | 11 | 9 | 11 | 10 | 10 | 12 | 12 | 11 | 12 | 13 | 10 | 9 | 11 | 10 | 10 |
| 167 | 10 | 11 | 11 | 9 | 11 | 10 | 10 | 12 | 12 | 12 | 13 | 13 | 11 | 9 | 11 | 10 | 10 |
| 168 | 10 | 11 | 12 | 10 | 11 | 11 | 11 | 13 | 14 | 13 | 14 | 15 | 11 | 10 | 12 | 10 | 10 |

Laboratory: Standard-Tech Co. Ltd Testing Center
 NVLAP CODE: 201011-0

Report Format Number STD/QR4909-A/2

Address: Standard-Tech Building, No.6 Guanhong Road, Guangzhou Science City, Guangzhou 510663, China

Tel: 8620-3229 0320 Fax: 8620-32290422 <http://www.standard-tech.com>



NVLAP LAB CODE 201011-0

| | | | | | | | | | | | | | | | | | |
|-----|----|----|----|----|----|----|----|----|----|----|----|----|----|----|----|----|----|
| 169 | 11 | 12 | 12 | 10 | 11 | 11 | 11 | 14 | 15 | 14 | 15 | 15 | 12 | 10 | 12 | 11 | 11 |
| 170 | 11 | 12 | 12 | 10 | 12 | 12 | 12 | 14 | 16 | 15 | 15 | 15 | 12 | 11 | 12 | 12 | 11 |
| 171 | 12 | 12 | 13 | 10 | 12 | 12 | 12 | 15 | 16 | 16 | 15 | 16 | 12 | 11 | 12 | 12 | 12 |
| 172 | 12 | 12 | 13 | 10 | 12 | 13 | 12 | 15 | 16 | 16 | 15 | 16 | 12 | 11 | 13 | 12 | 12 |
| 173 | 12 | 12 | 13 | 11 | 12 | 13 | 12 | 14 | 16 | 15 | 15 | 15 | 12 | 11 | 13 | 12 | 12 |
| 174 | 12 | 12 | 13 | 11 | 12 | 13 | 12 | 14 | 15 | 15 | 15 | 15 | 12 | 12 | 13 | 12 | 12 |
| 175 | 13 | 13 | 13 | 11 | 12 | 13 | 12 | 14 | 15 | 15 | 15 | 15 | 13 | 12 | 13 | 12 | 13 |
| 176 | 13 | 13 | 13 | 11 | 12 | 12 | 12 | 14 | 14 | 14 | 14 | 15 | 12 | 12 | 13 | 12 | 13 |
| 177 | 13 | 13 | 13 | 11 | 12 | 12 | 12 | 13 | 13 | 14 | 14 | 14 | 12 | 12 | 13 | 12 | 13 |
| 178 | 13 | 13 | 13 | 11 | 12 | 12 | 12 | 13 | 13 | 13 | 13 | 14 | 11 | 12 | 13 | 12 | 13 |
| 179 | 13 | 13 | 13 | 11 | 12 | 12 | 11 | 12 | 12 | 13 | 12 | 13 | 11 | 12 | 13 | 12 | 13 |
| 180 | 13 | 13 | 13 | 13 | 13 | 13 | 13 | 13 | 13 | 13 | 13 | 13 | 13 | 13 | 13 | 13 | 13 |

Laboratory: Standard-Tech Co. Ltd Testing Center
NVLAP CODE: 201011-0

Report Format Number STD/QR4909-A/2

Address: Standard-Tech Building, No.6 Guanhong Road,Guangzhou Science City, Guangzhou 510663, China

Tel: 8620-3229 0320 Fax: 8620-32290422 <http://www.standard-tech.com>

| | |
|--|-----------------------|
| 2.2 Electrical, Photometric and Chromaticity Measurements (Refer to Work Instruction QD25) | IES LM-79 2008 |
|--|-----------------------|

| | | | |
|-------------------------|-------------------|---------------------------------|---------|
| Test date | 2015-12-14 | Test Ambient: | 25.2 °C |
| Test Orientation | As intended | Stabilization Time (min) | 90 |
| Model Number | AOK-180WiT(5700K) | | |

Electrical Measurement:

| Sample No. | Voltage (Vac) | Frequency (Hz) | Current (A) | Power (W) | Power Factor | THD % |
|------------|---------------|----------------|-------------|-----------|--------------|-------|
| GZE151161 | 120.0 | 60 | 1.5435 | 184.4 | 0.9956 | 5.33 |
| -B2 | 277.0 | 60 | 0.6992 | 179.5 | 0.9268 | 12.81 |

Sphere-Spectroradiometer Method:

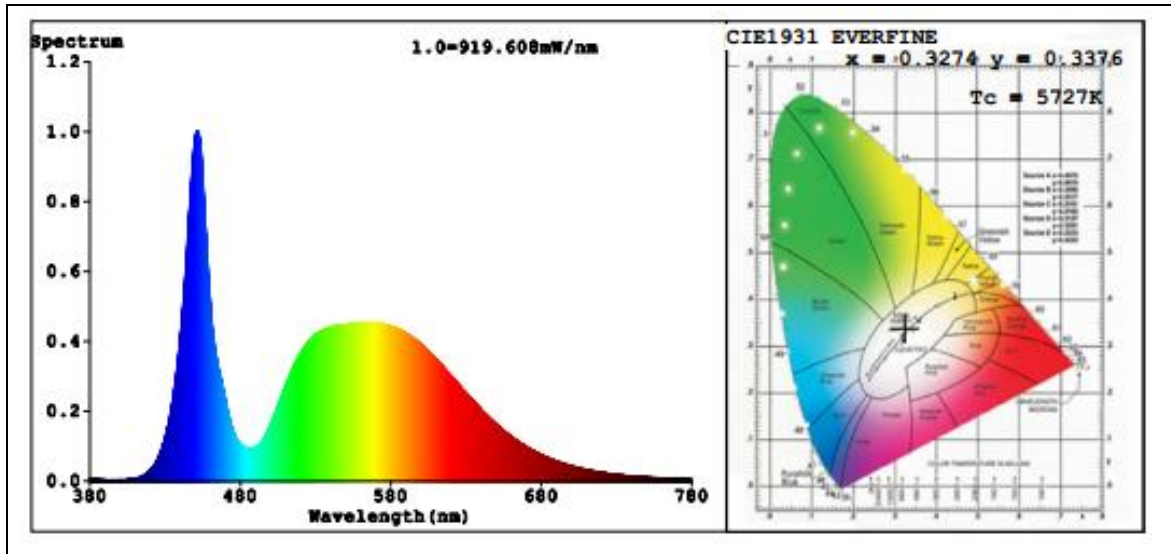
| Parameter | Result |
|-----------------------------|---------------------|
| Test Voltage (V) | 120.0 |
| Frequency (Hz) | 60 |
| Color Rendering Index (CRI) | 75.1 |
| R9 | 0 |
| CCT (K) | 5727 |
| Chromaticity (x, y) | x=0.3274 y=0.3376 |
| Chromaticity (u', v') | u'=0.2048 v'=0.4750 |
| Duv | 0.0005 |
| Total Luminous (lm) | 25854 |
| Luminous Efficacy (lm/W) | 140.21 |

| Special Color Rendering Indices | | | |
|---------------------------------|----|-----|----|
| R1 | 74 | R9 | 0 |
| R2 | 79 | R10 | 49 |
| R3 | 81 | R11 | 73 |
| R4 | 76 | R12 | 42 |
| R5 | 74 | R13 | 75 |
| R6 | 71 | R14 | 89 |
| R7 | 84 | R15 | 70 |
| R8 | 63 | -- | -- |

Sphere-Spectroradiometer Method :

| Parameter | Result |
|--------------------------------|--------|
| Test Voltage (V) | 277.0 |
| Frequency (Hz) | 60 |
| Total Initial Lumen Output(lm) | 25457 |
| Initial Lumen Efficacy(lm/w) | 141.82 |

Spectral Power Distribution & Chromaticity Diagram



Laboratory: Standard-Tech Co. Ltd Testing Center
NVLAP CODE: 201011-0

Report Format Number STD/QR4909-A/2

Address: Standard-Tech Building, No.6 Guanhong Road, Guangzhou Science City, Guangzhou 510663, China

Tel: 8620-3229 0320 Fax: 8620-32290422 <http://www.standard-tech.com>

3. Test Equipment

| Equipment ID | Equipment Name | Last Calibration Date | Next Calibration Date |
|---|------------------------------------|-----------------------|-----------------------|
| ST-R-336 | 2 meter Integrating Sphere | 2015-07-01 | 2016-06-30 |
| ST-R-331 | Spectral analysis system HAAS-2000 | 2015-07-01 | 2016-06-30 |
| D204 | Standard Lamp | 2015-07-01 | 2016-06-30 |
| PF2010 | Power Meter for Integrating Sphere | 2015-07-01 | 2016-06-30 |
| EE-09 | Goniophotometer system | 2015-07-01 | 2016-06-30 |
| D908S | Standard Lamp | 2015-07-01 | 2016-06-30 |
| PF210 | Power Meter for Goniophotometer | 2015-07-01 | 2016-06-30 |
| ST-R-181A | Temperature Tester | 2015-07-01 | 2016-06-30 |
| Uncertainty Photometric Measurement (Sphere):1.74% Chromaticity Measurement(Sphere):14.3K Photometric Measurement(Goniophotometer):1.62% | | | |

******* END OF DATASHEET PACKAGE *******