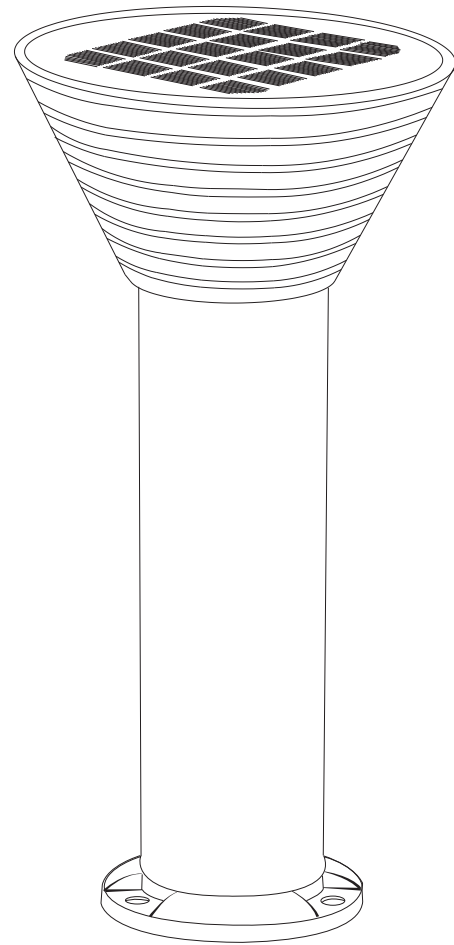


Solar Lawn Light





Hourglass - AC Lawn Light

The lamp body is made of thickened die cast aluminum, which has high strength, strong impact resistance, lightweight texture, and good corrosion resistance;
Using voltage supply AC220V;
The semi transparent lampshade design greatly improves the lighting effect by achieving uniform distribution of light



Hourglass - Solar Power Lawn Light

The lamp body is made of thickened die cast aluminum, which has high strength, strong impact resistance, lightweight texture, and good corrosion resistance;
Efficient solar monocrystalline silicon panel with a power of up to 4.5W;
Built in lithium iron phosphate battery, with 6000mAh capacity, long lifespan, and safety.

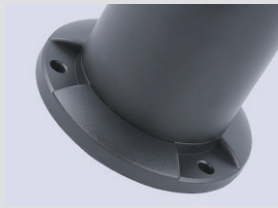


Feature ▶



Thickened die cast aluminum material

Integrated molding, high strength and rigidity



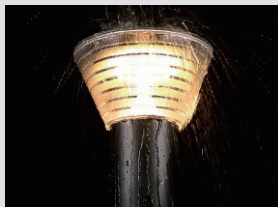
Hourglass principle design

Integrated molding, high strength and rigidity



IP 65 waterproof rating

Fearless of wind and rain, lights up normally on rainy days



CCT ▶

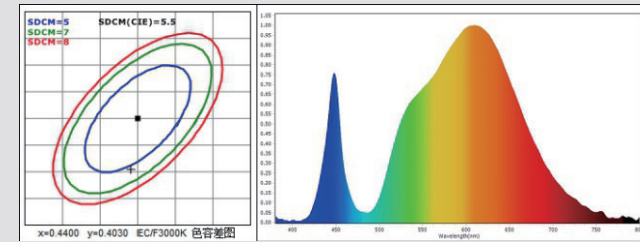


3000K / Warm Light

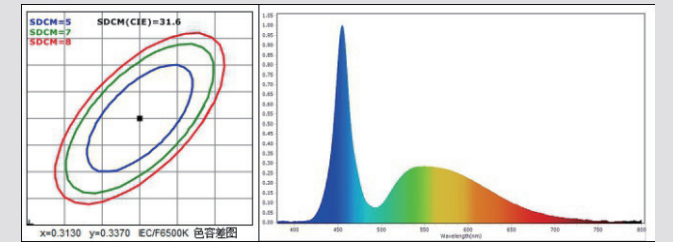


6500K / White Light

Luminous data ▶



3000K:
Luminous flux: 146.57lm CRI: 78.48Ra



6500K:
Luminous flux: 155.97lm CRI: 80.09Ra



TYPE:

This type of light is mainly used in wide villa gardens, residential courtyards, parks, squares, scenic spots, and modern architectural lighting environments. 180 ° luminous effect, the lamp is suitable for installation at a distance of 3-5 meters.

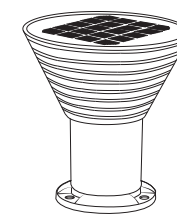
Parameter

Style and model+	
Hourglass lawn lamp	AOK-CPD3004
Product specifications+	
Monocrystalline silicon solar panel (W)	4.5W/5V
Lithium iron phosphate battery (mAh)	3.2V/6000mAh
Light source type	2835
Number of new LED products (pcs)	20pcs
Lamp body material	Die cast aluminum lamp body+PC lens
Lamp body color	Black (special colors can be customized)
Net weight of lamp (kg)	30 high (1.3kg), 60 high (1.86kg), 80 high (2.2kg)
Product size (mm)	ø230mm×150mm×H300/600/800mm
Installation distance	3-6m
Product performance+	
Rated power (W)	4.5W
Input voltage (V)	DC 3.2V
Color Temperature (K)	3000K-6500K
Luminous flux (lm)	146.57lm (3000K) 、 155.97lm (6500K)
Color Rendering Index	CRI>80
Working hours (light control mode)	3-5 rainy days
waterproof rating	IP 65
beam angle	180°
Working environment+	
working environment	-25°C~50°C
Operating Humidity	10%-90%

Dimensions



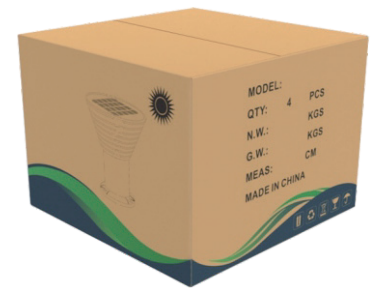
Packaging



Fixture*1



Single inner box



Lamp outer box

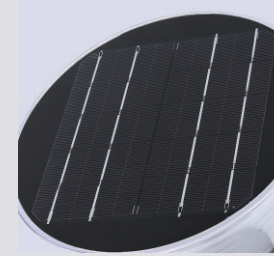
Type	Packaging Type	Product Quantity	Quantity of Cartons	Carton Size (mm)	Net Weight (kg)	Gross Weight (kg)
Solar energy 30cm	Inner box	1	1	270x270x360	1.3	2
	Outer box	4	1	500x500x370	5.2	8.14
Solar energy 60cm	inner box	1	1	660x270x260	1.86	2.64
	outer box	4	1	500x500x680	7.44	10.8
Solar energy 80cm	inner box	1	1	870x270x260	2.2	3.2
	outer box	4	1	500x500x870	8.8	12.98

Net weight and gross weight are for reference only



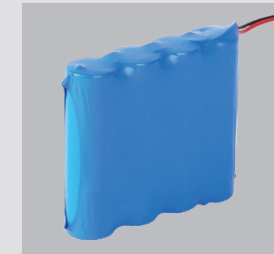
High lumen 2835 chip

High power LED chips with bright light and a lifespan of up to 80000 to 100000 hours



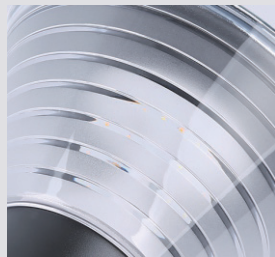
Monocrystalline silicon solar panel

High power LED chips with bright light and a lifespan of up to 80000 to 100000 hours



Lithium iron phosphate battery

6Ah high-capacity battery with strong safety and a lifespan of over 2000 charging and discharging cycles, fast charging rate



PC translucent lampshade

Wide irradiation area, with a transparency of up to 90%



Button type waterproof switch

After turning on the switch, you need to wait for 3 seconds for the automatic light to turn on (Note: Solar panels will only light up in dark environments)



Thickened die cast aluminum material

All aluminum lamp body, outdoor waterproof and durable. The lamp is placed in the hole and fixed with 3 expansion screws



Hourglass/Lawn Light

TYPE:

This light pattern is mainly used in villa gardens, parks, gardens, residential areas, factory parks, villa courtyards, and modern building lighting environments that are brighter than the landscape. 180 ° luminous effect, suitable for installation distance of 3-6 meters.





